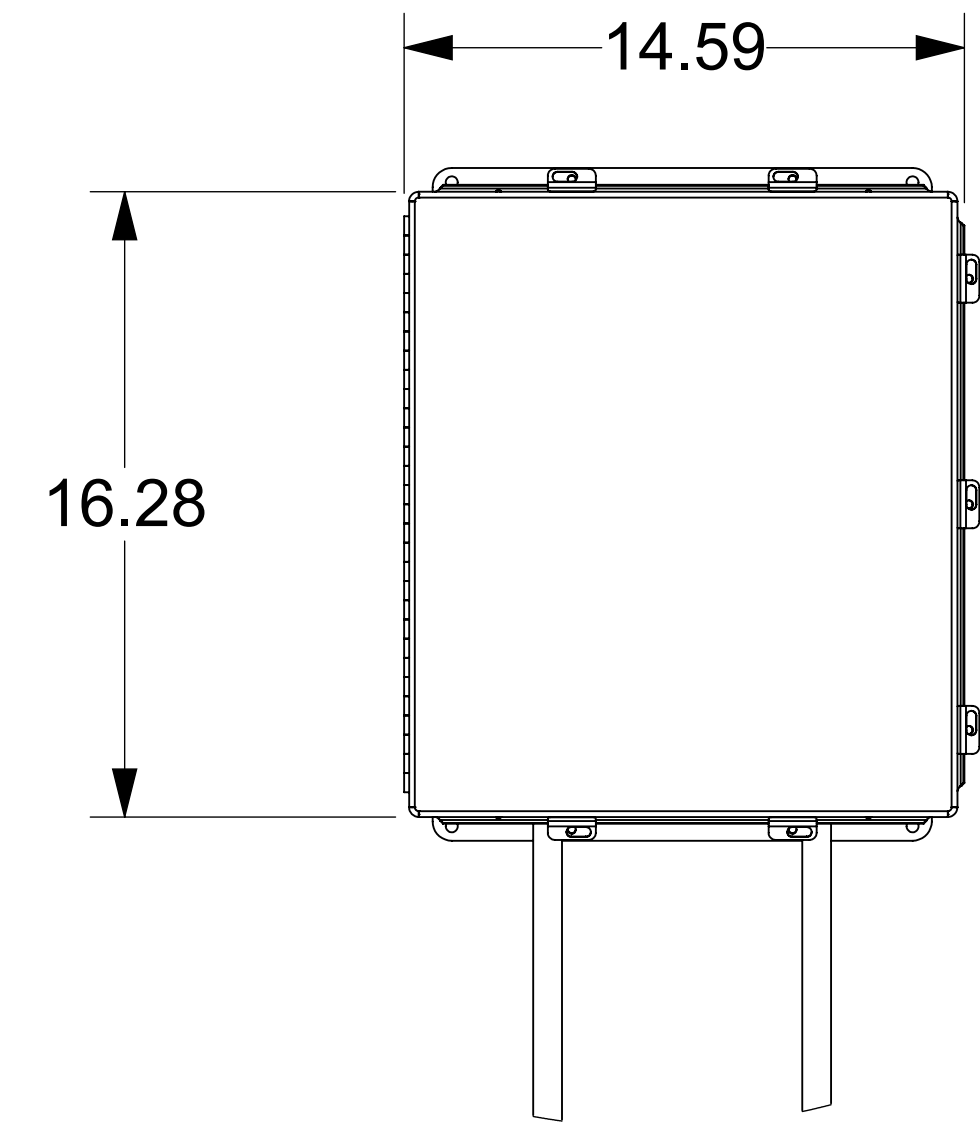
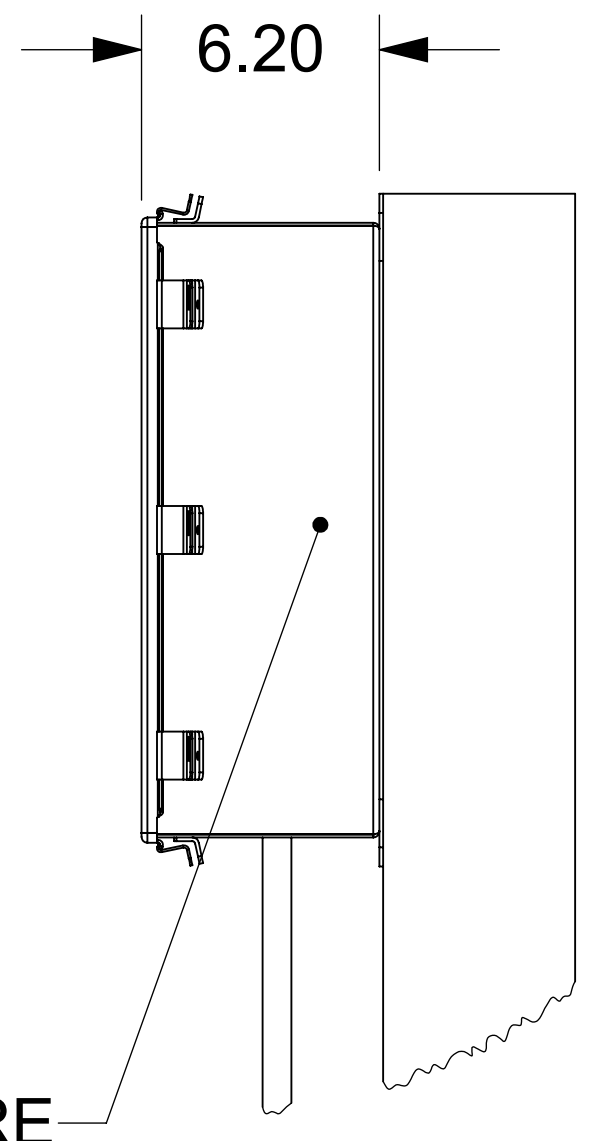


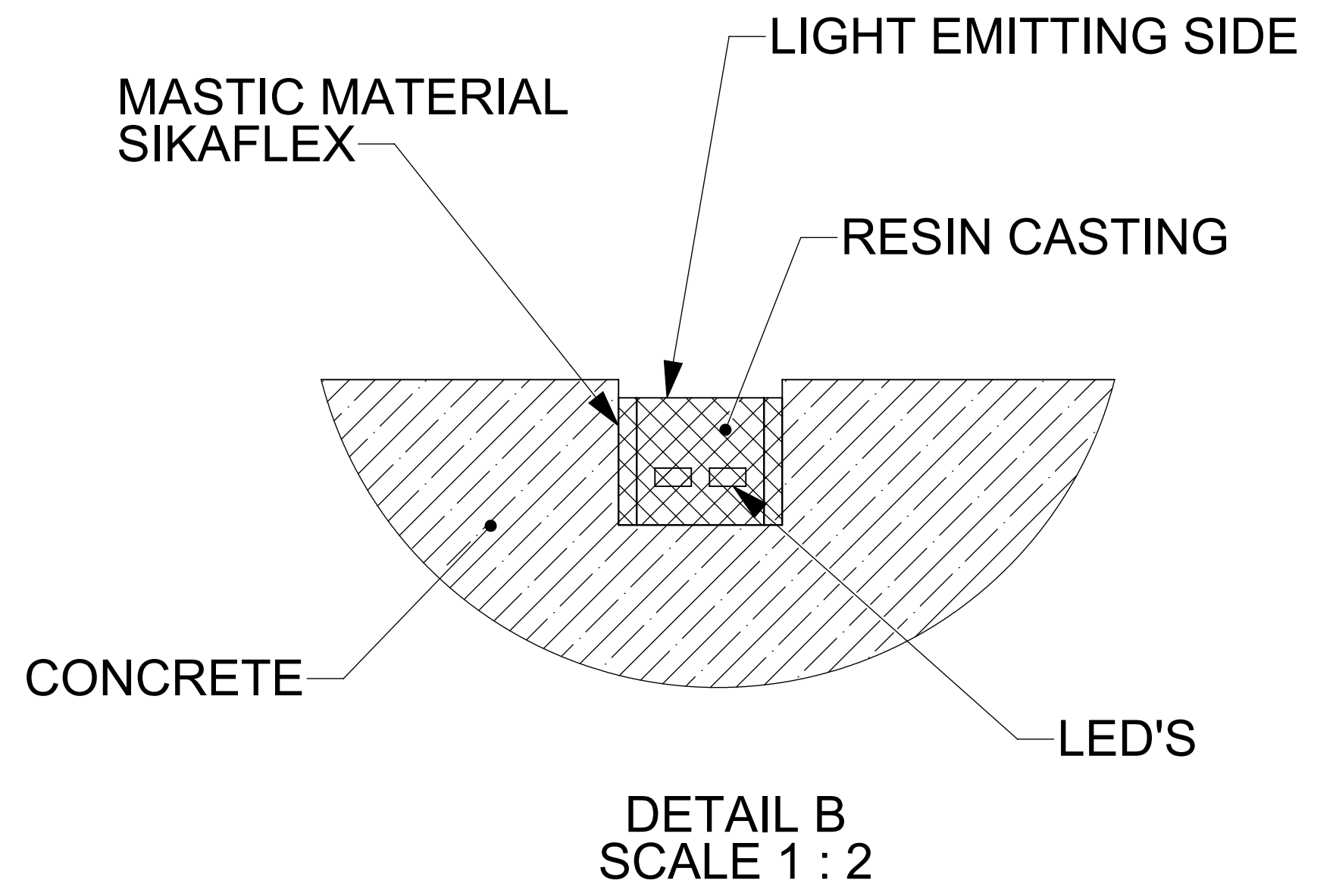
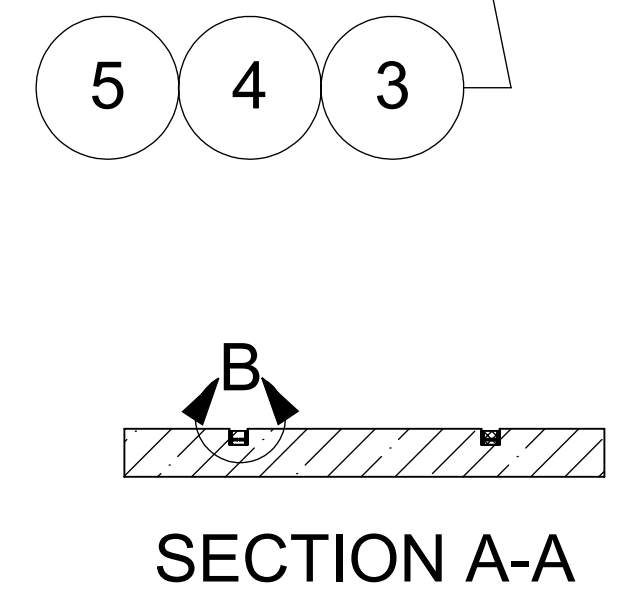
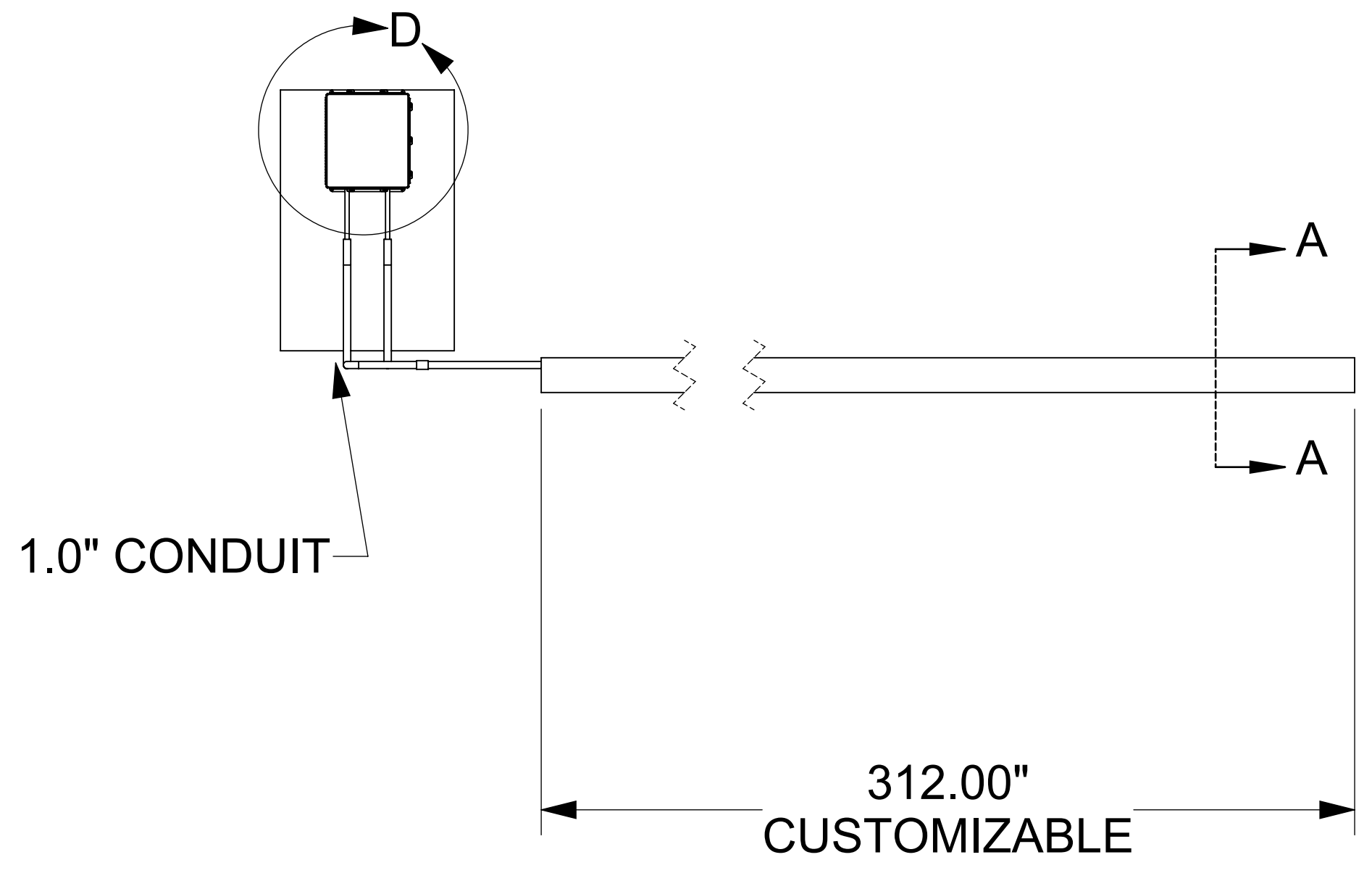
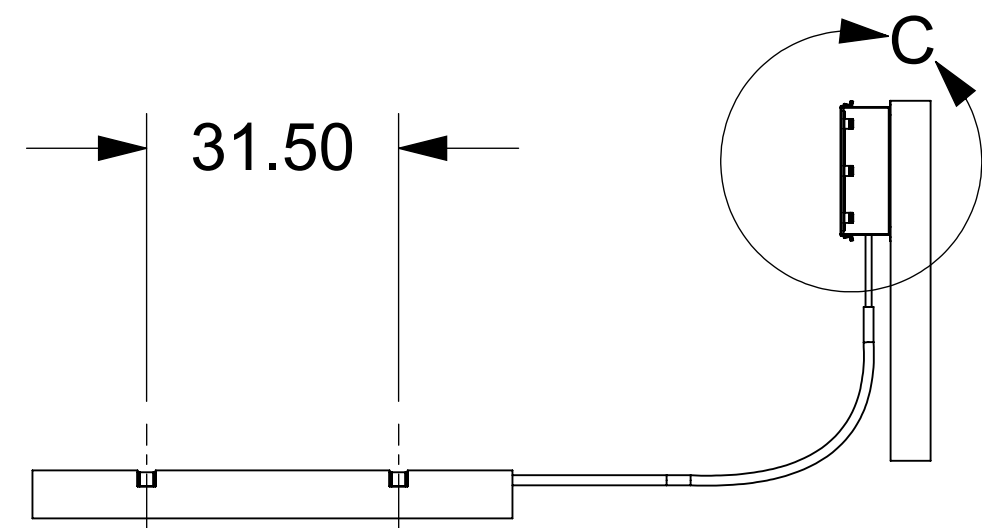
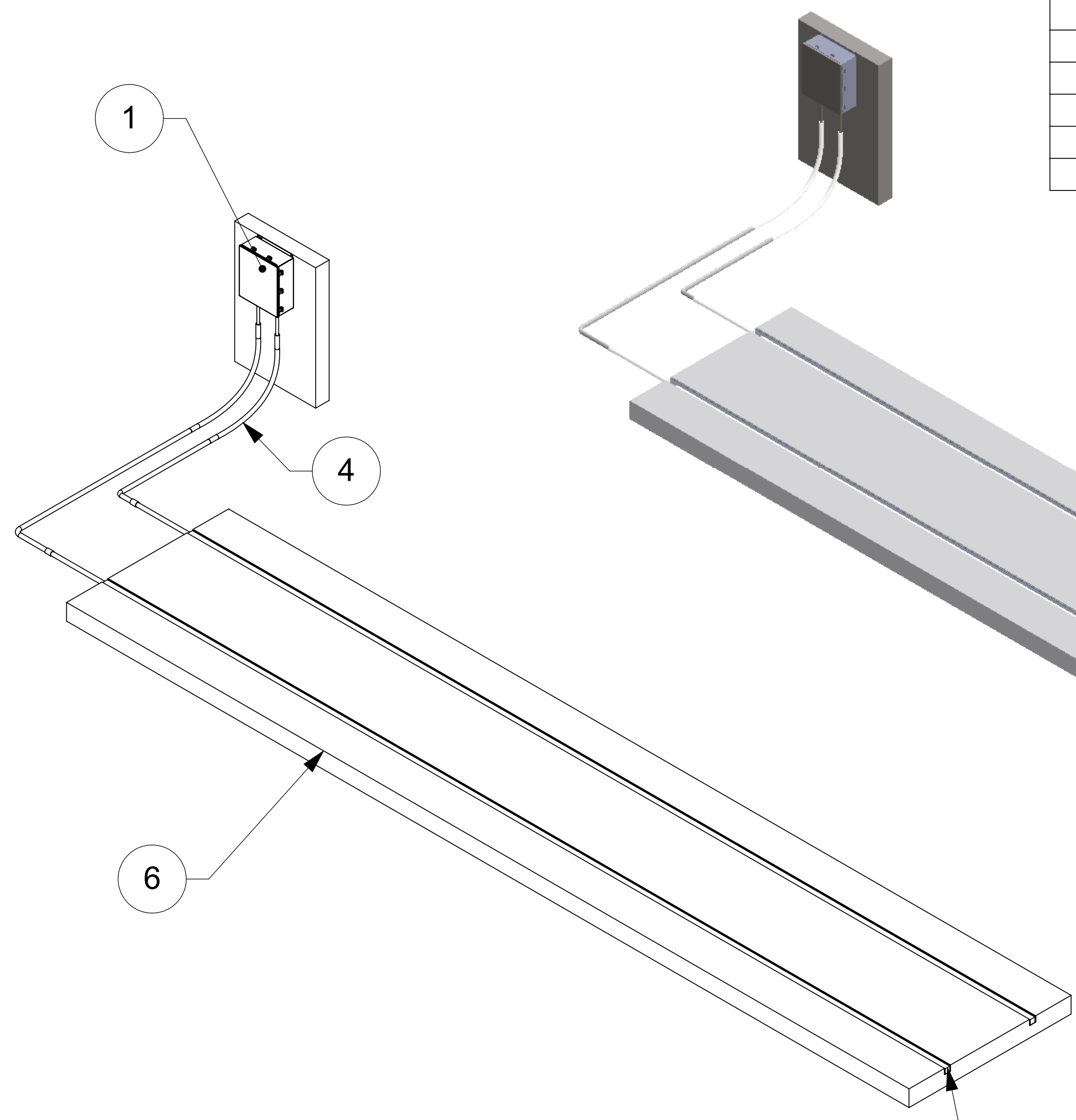
ITEM	QTY	DESCRIPTION	WT EA	REF #
1	1	UNDERCARRIAGE LIGHT SYSTEM ENCLOSURE	8.19	2462-29
2	2	LED STRIP	3.57	-
3	2	RESIN CAST	36.94	-
4	2	PVC CONDUIT	0.84	-
5	4	SIKAFLEX CAULKING MATERIAL	6.95	-
6	1	CONCRETE AREA	9099.65	-



DETAIL D
SCALE 1 : 5



DETAIL C
SCALE 1 : 5



DETAIL B
SCALE 1 : 2

THIS DRAWING UNLESS OTHERWISE NOTED, REMAINS THE CONFIDENTIAL PROPERTY AND TRADE SECRET OF DELTA SCIENTIFIC CORPORATION. IT SHALL NOT BE REPRODUCED, REPRODUCED OR USED FOR MANUFACTURE, DESIGN OR CONSTRUCTION WITHOUT THE EXPRESS AUTHORIZATION OF DELTA SCIENTIFIC CORPORATION. THE RECIPENT BY ACCEPTING THIS DRAWING ASSUMES CUSTODY THEREOF AND UNDER THE ABOVE TERMS AGREES NOT TO ALLOW USE OF IT BY UNAUTHORIZED PERSONS.

UNLESS OTHERWISE NOTED DIMENSIONS ARE IN INCHES

TOLERANCES
 X = ± .060/FT
 XX = ± .030/FT
 XXX = ± .010/FT
 ANGLES = ± 5°

SURFACE FINISH
 125 ✓

REMOVE ALL BURRS AND BREAK SHARP EDGES .02 MAX

DELTA SCIENTIFIC CORPORATION
 40355 DELTA LANE
 PALMDALE, CA 93551 U.S.A.
 (861) 575-1000 FAX (861) 575-1109

DELTA

DELTA LIGHTS SECURITY ILLUMINATION SYSTEM

DRAWN BY KA	DATE 9/1/2021	DRAWING NO. 16523	REV. -
CHKD BY	DATE	SCALE: 1:24	SHEET SHEET 1 OF 3
APPV BY	DATE		

© 2021 ALL RIGHTS RESERVED

8

7

6

5

4

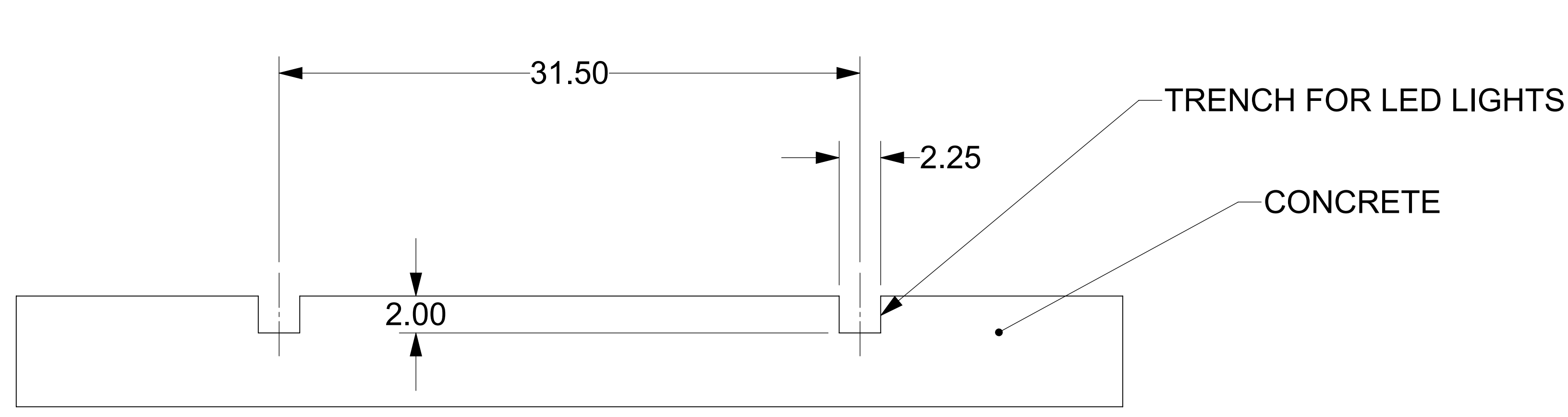
3

2

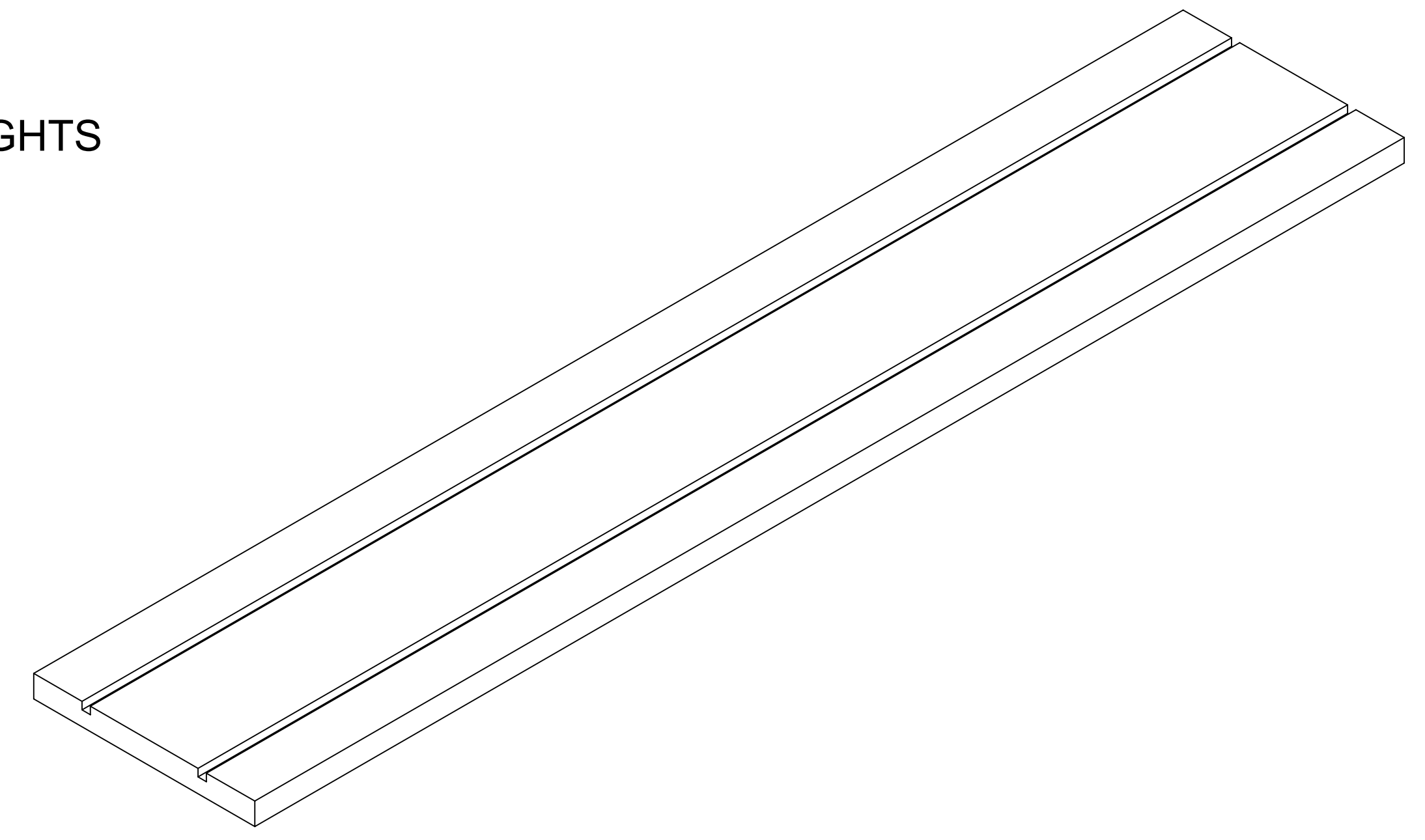
1

D

D

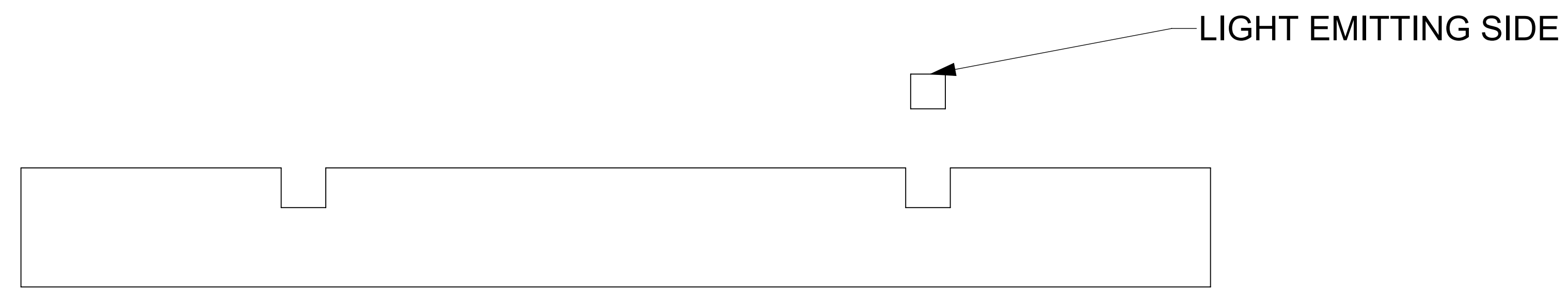


STEP 1



C

C

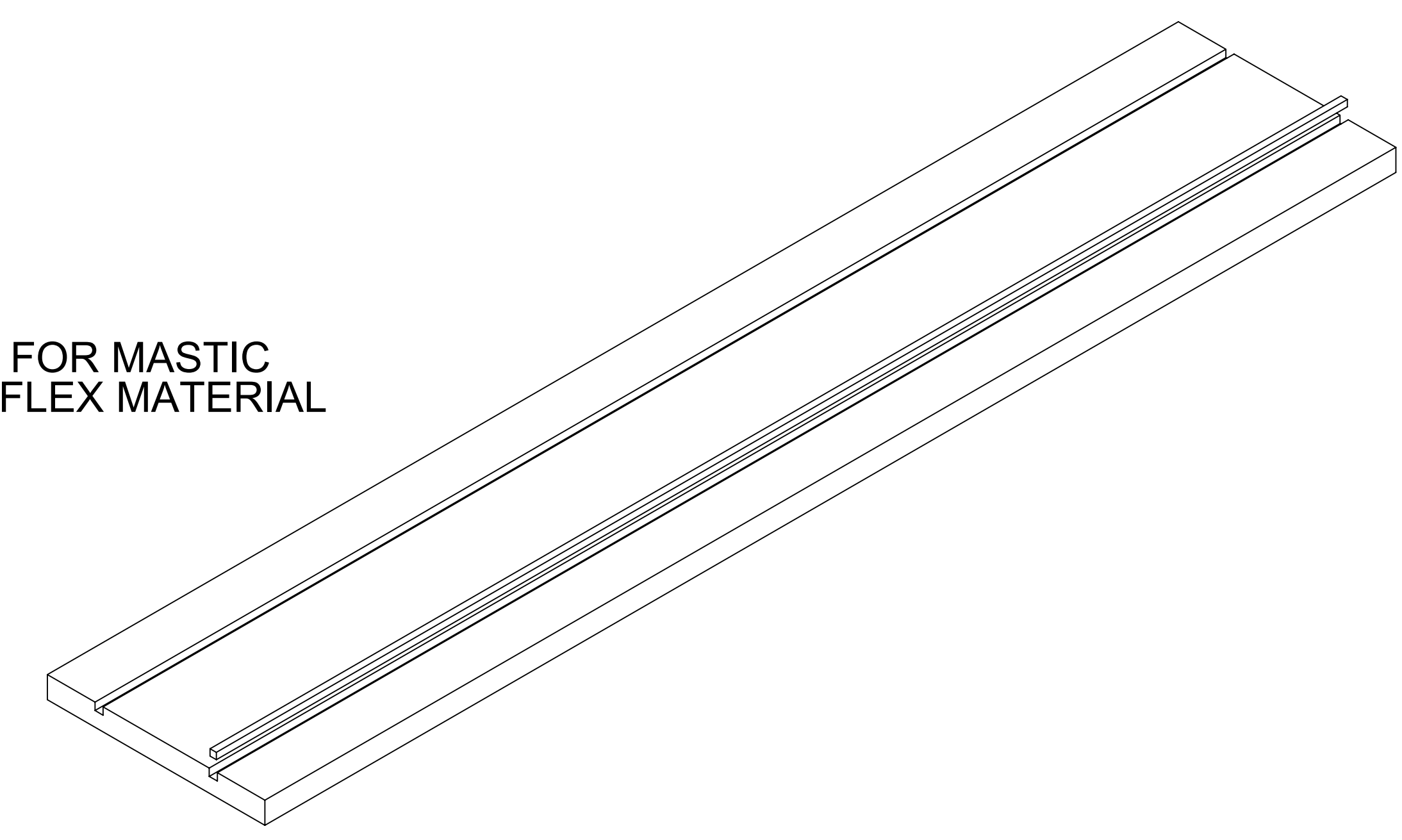


SPACE NEEDED FOR MASTIC MATERIAL/ SIKAFLEX MATERIAL



MUST BE LOWER THAN CONCRETE LEVEL

STEP 2



B

B

A

A

NOTES:
 1. AT THIS STEP, USE FISH TAPE TO PULL COMPLETE POWER CORD PORTION THROUGH PVC CONDUIT FROM CONCRETE TO THE POWER SUPPLY LOCATION.

<small>THIS DRAWING UNLESS OTHERWISE NOTED, REMAINS THE CONFIDENTIAL PROPERTY AND TRADE SECRET OF DELTA SCIENTIFIC CORPORATION. IT SHALL NOT BE DISCLOSED, REPRODUCED OR USED FOR MANUFACTURE, DESIGN OR CONSTRUCTION WITHOUT THE EXPRESS AUTHORIZATION OF DELTA SCIENTIFIC CORPORATION. THE RECURRENCE BY ACCEPTING THIS DRAWING ASSUMES CUSTODY THEREOF AND UNDER THE ABOVE TERMS AGREES NOT TO ALLOW USE OF BY UNAUTHORIZED PERSONS.</small>	<small>UNLESS OTHERWISE NOTED DIMENSIONS ARE IN INCHES</small> TOLERANCES X = ± .060/FT XX = ± .030/FT XXX = ± .010/FT ANGLES = ± 5°	DELTA SCIENTIFIC CORPORATION 40355 DELTA LANE PALMDALE, CA 93551 U.S.A. (861) 575-1000 FAX (861) 575-1109	
		DELTA LIGHTS SECURITY ILLUMINATION SYSTEM	
<small>DRAWN BY</small> KA <small>CHKD BY</small> <small>APPV BY</small>	<small>DATE</small> 9/1/2021 <small>DATE</small> <small>DATE</small>	<small>DRAWING NO.</small> 16523 <small>SCALE:</small> 1:3	<small>REV.</small> - <small>SHEET</small> SHEET 2 OF 3

8

7

6

5

4

3

2

1

8

7

6

5

4

3

2

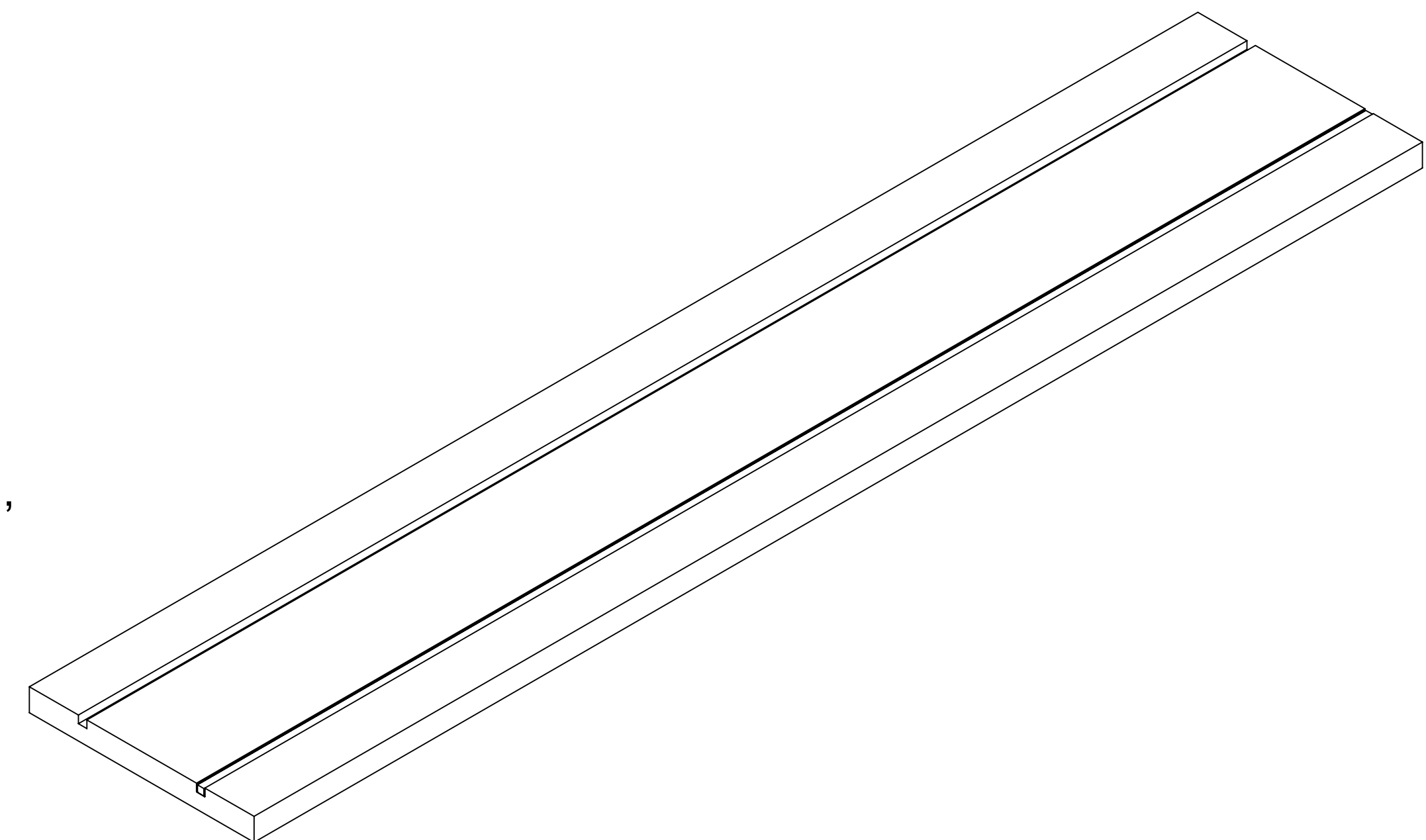
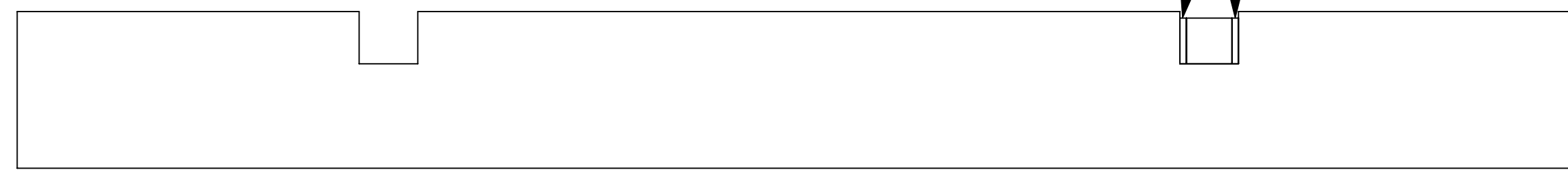
1

D

D



FILL VOID WITH SIKAFLEX MATERIAL
DO NOT GET ON SURFACE OF LED RESIN,
WILL OBSTRUCT LIGHT EMISSION.



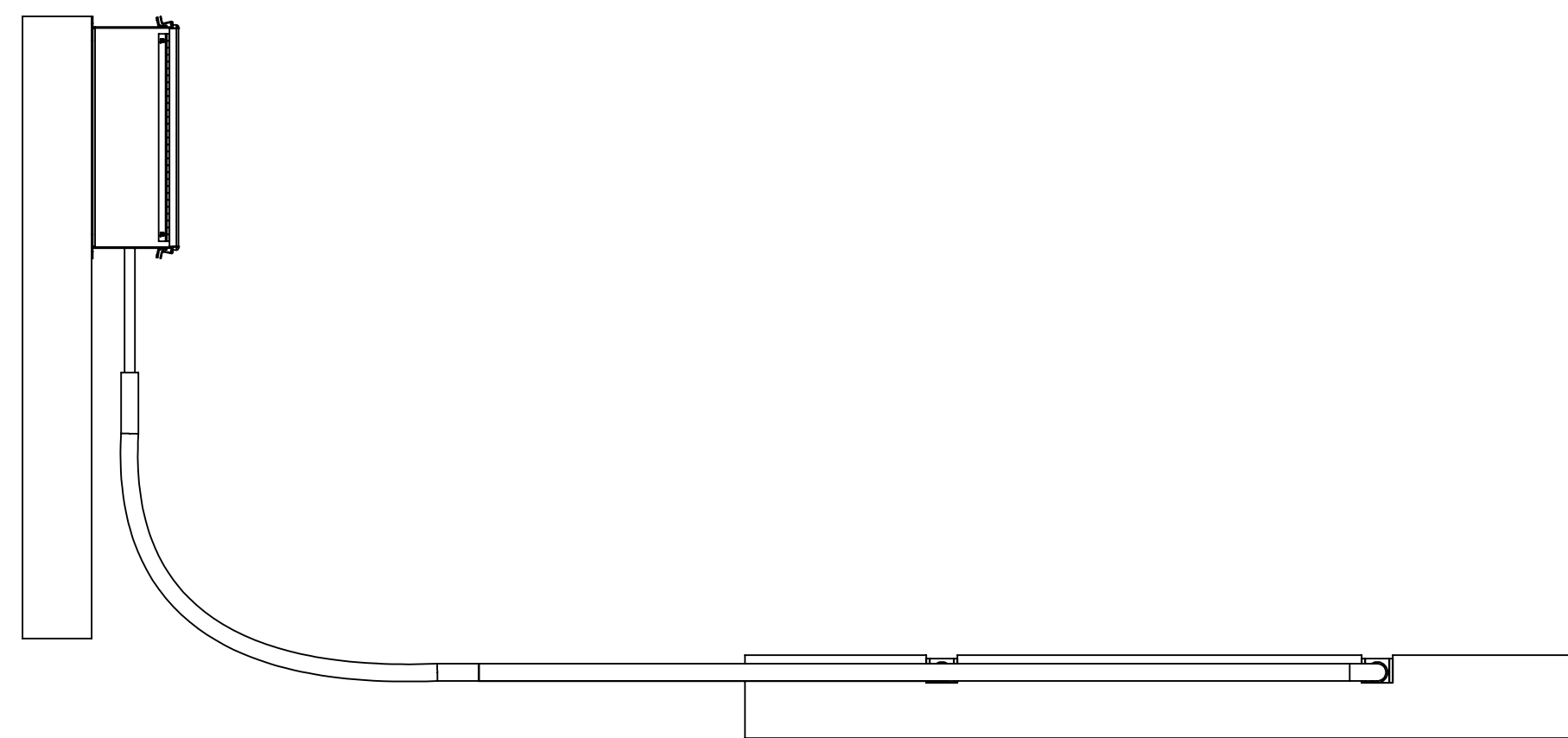
STEP 3

C

C

B

B



STEP 3 COMPLETED

A

A

THIS DRAWING UNLESS OTHERWISE NOTED, REMAINS THE CONFIDENTIAL PROPERTY AND TRADE SECRET OF DELTA SCIENTIFIC CORPORATION. IT SHALL NOT BE DISCLOSED, REPRODUCED OR USED FOR MANUFACTURE, DESIGN OR CONSTRUCTION WITHOUT THE EXPRESS AUTHORIZATION OF DELTA SCIENTIFIC CORPORATION. THE RECIPENT BY ACCEPTING THIS DRAWING, ASSUMES CUSTODY THEREOF AND UNDER THE ABOVE TERMS AGREES NOT TO ALLOW USE OF BY UNAUTHORIZED PERSONS.

UNLESS OTHERWISE NOTED, DIMENSIONS ARE IN INCHES

TOLERANCES
X = ± .060/FT
XX = ± .030/FT
XXX = ± .010/FT
ANGLES = ± 5°

SURFACE FINISH
125 ✓

REMOVE ALL BURRS AND BREAK SHARP EDGES .02 MAX

DELTA SCIENTIFIC CORPORATION
40355 DELTA LANE
PALMDALE, CA 93551 U.S.A.
(861) 575-1000 FAX (861) 575-1109

DELTA

DELTA LIGHTS SECURITY ILLUMINATION SYSTEM

DRAWN BY KA	DATE 9/1/2021	DRAWING NO. 16523	REV. -
CHKD BY	DATE	SCALE: 1:3	SHEET 3 OF 3

© 2021 ALL RIGHTS RESERVED

8

7

6

5

4

3

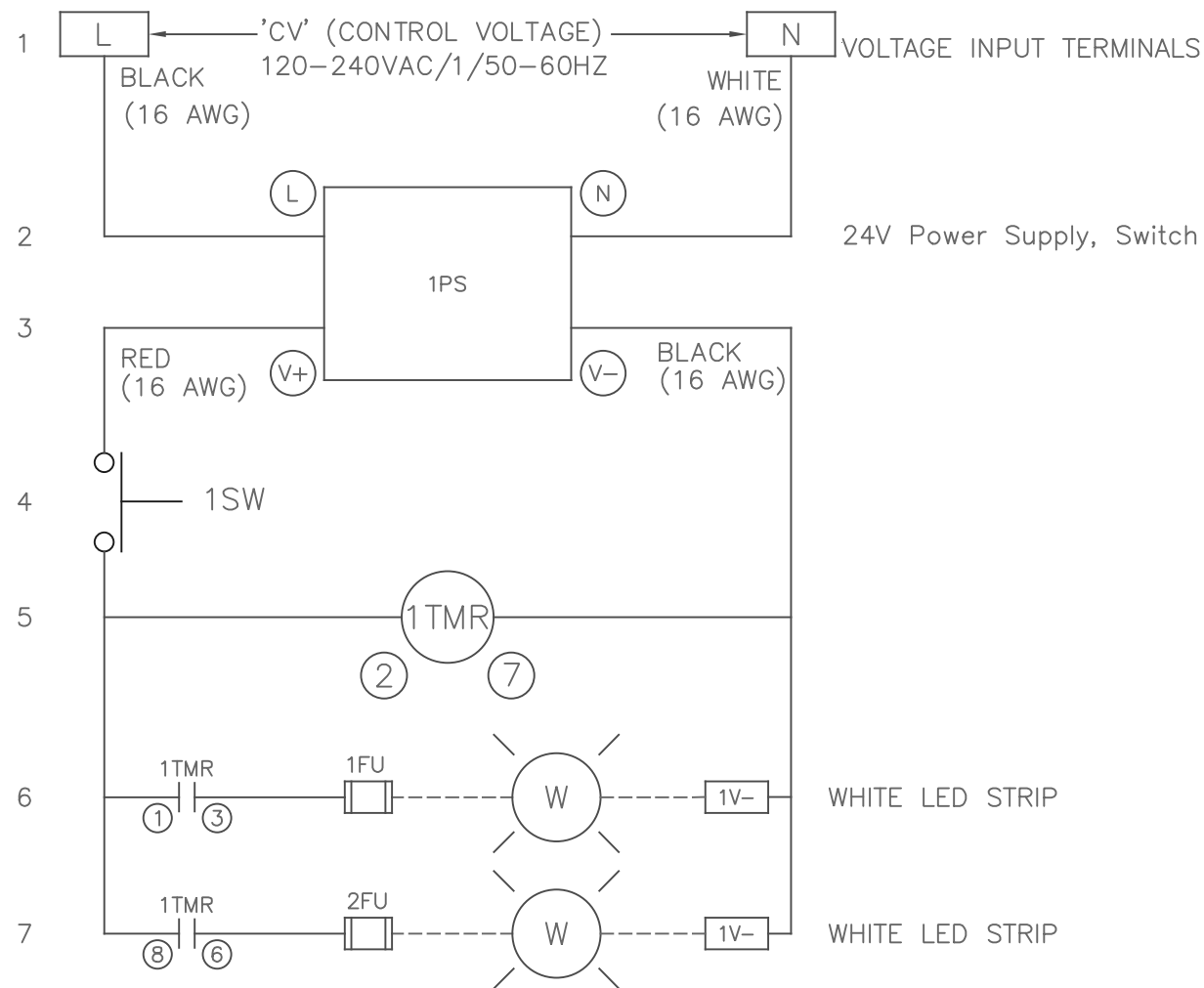
2

1

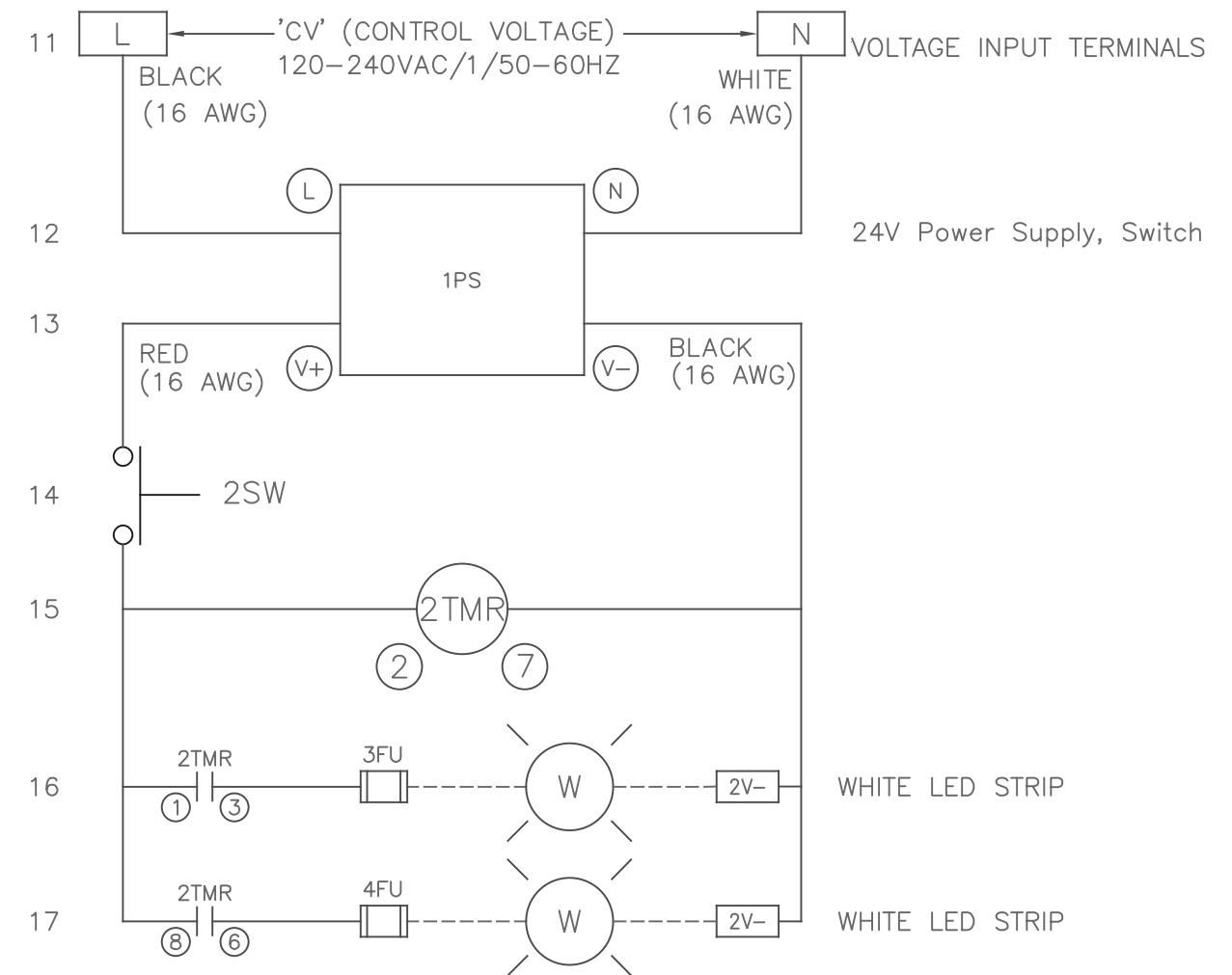
LEDS ARE 5.85 WATTS PER FOOT, THAT IS 117 WATTS, 4.87 AMPS

ITEM	QUAN.	DESCRIPTION	STOCK NO.
1PS, 2PS	2	POWER SUPPLY, 24V 300W, RSP-320-24	2461-27
1TMR, 2TMR	2	ON DELAY TIMER, 3 HOUR PRESET, 24VDC	2458-01
1SW, 2SW	2	ALLEN BRADLEY NORMALLY OPEN CONTACT	2463-91F
1FU-4FU	4	FUSE, 250V, 4 AMP	2459-19
01	1	BASE PLATE, ALUMINUM, 10-7/8 X 13-1/4	STOCK
02	2	MOUNT FOR 300W POWER SUPPLY	STOCK
03	11	DIN TERMINAL BLOCK	2460-60
04	2	DIN TERMINAL BLOCK END	2460-62
05	2	DIN TERMINAL BLOCK GROUND	2460-61
06	4	FUSE BLOCK	2460-63

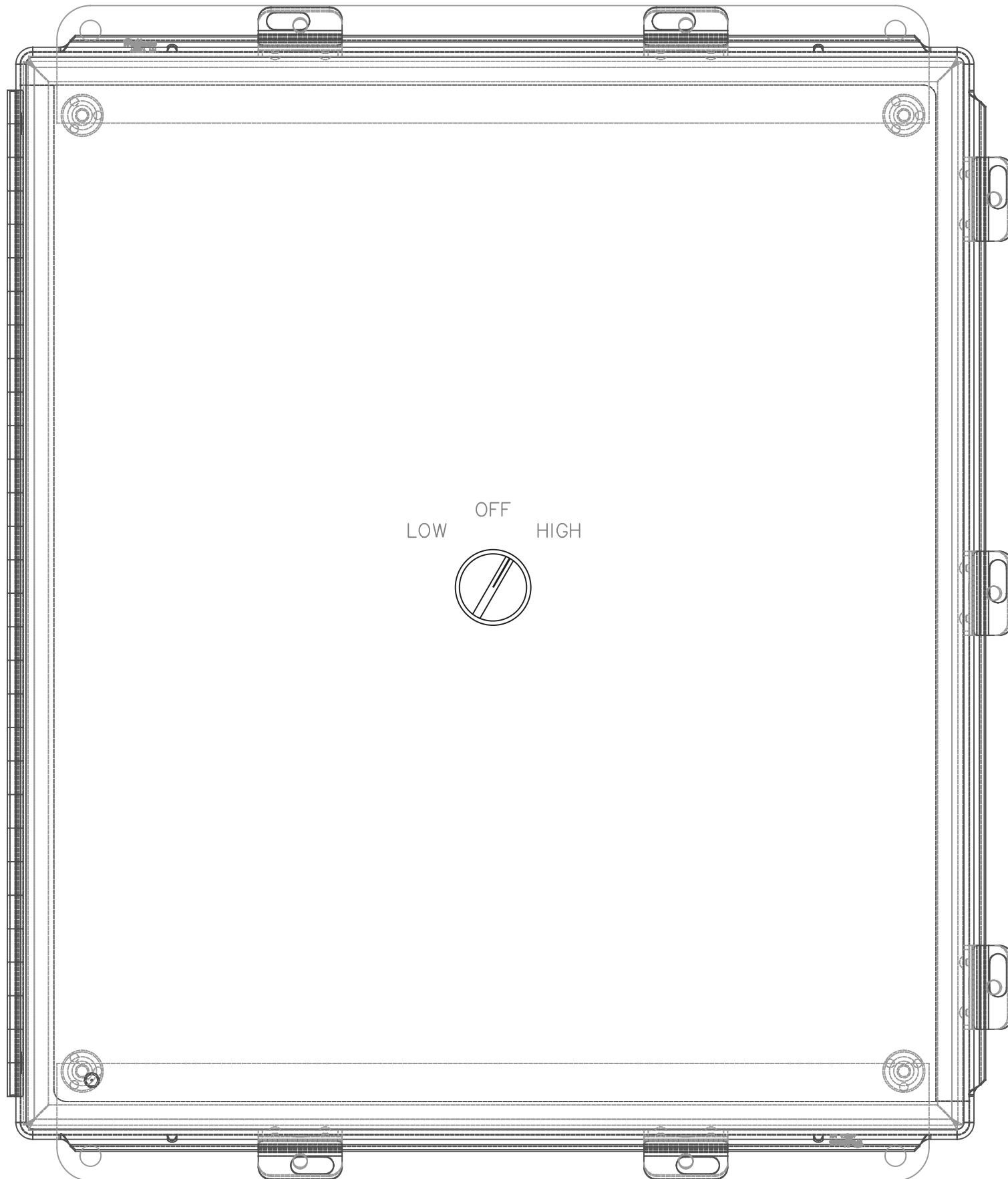
CONTROL CIRCUIT WIRING LED BANK 1



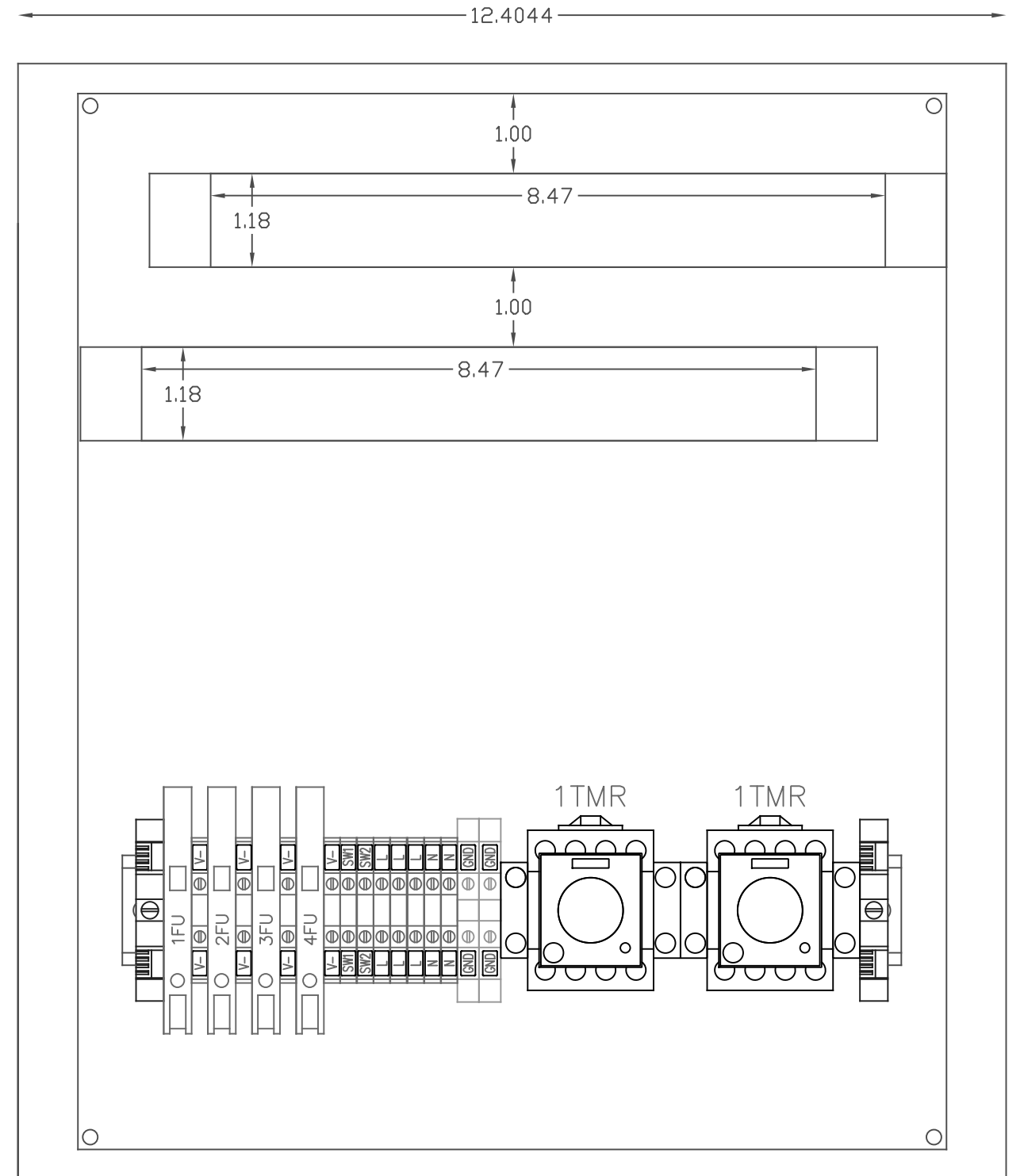
CONTROL CIRCUIT WIRING LED BANK 2




<small>THIS DRAWING UNLESS OTHERWISE NOTED, REMAINS THE CONFIDENTIAL PROPERTY AND TRADE SECRET OF DELTA SCIENTIFIC CORPORATION. IT SHALL NOT BE DISCLOSED, REPRODUCED OR USED FOR MANUFACTURE, DESIGN OR CONSTRUCTION WITHOUT THE EXPRESS AUTHORIZATION OF DELTA SCIENTIFIC CORPORATION. THE SIGNATURE BY ACCEPTING THIS DRAWING, ASSUMES CUSTODY THEREOF AND UNDER THE ABOVE TERMS AGREES NOT TO ALLOW USE OF BY UNAUTHORIZED PERSONS.</small>	<small>UNLESS OTHERWISE NOTED DIMENSIONS ARE IN INCHES</small>	DELTA SCIENTIFIC CORPORATION 40355 DELTA LANE PALMDALE, CA 93551 U.S.A. (661) 575-1100 FAX (661) 575-1109		
	<small>TOLERANCES</small> .X = ±.060/FT .XX = ±.030/FT .XXX = ±.010/FT ANGLES = ±.5°	UVLS100 UNDERCARRIAGE VEHICLE LIGHTING SYSTEM		
	<small>SURFACE FINISH</small> 125	<small>DRWN BY</small> J. Morales	<small>DATE</small> 2/28/2019	<small>DRAWING NO.</small> UVLS100
	<small>REMOVE ALL BURRS & BREAK SHARP EDGES .02 MAX</small>	<small>CHKD BY</small> DATE	<small>DATE</small> DATE	<small>REV.</small> C
<small>© 2019 ALL RIGHTS RESERVED</small>	<small>SCALE:</small> 1:1 (D SCALE)	<small>SHEET</small> 1 OF 2	<small>APPVD BY</small> DATE	



14.0111



<small>THIS DRAWING UNLESS OTHERWISE NOTED, REMAINS THE CONFIDENTIAL PROPERTY AND TRADE SECRET OF DELTA SCIENTIFIC CORPORATION. IT SHALL NOT BE DISCLOSED, REPRODUCED OR USED FOR MANUFACTURE, DESIGN OR CONSTRUCTION WITHOUT THE EXPRESS AUTHORIZATION OF DELTA SCIENTIFIC CORPORATION. THE SIGNATURE BY ACCEPTING THIS DRAWING, ASSUMES CUSTODY THEREOF AND UNDER THE ABOVE TERMS AGREES NOT TO ALLOW USE OF BY UNAUTHORIZED PERSONS.</small>		<small>UNLESS OTHERWISE NOTED DIMENSIONS ARE IN INCHES</small>		 DELTA SCIENTIFIC CORPORATION 40355 DELTA LANE PALMDALE, CA 93551 U.S.A. (861) 575-1100 FAX (861) 575-1109	
<small>TOLERANCES .X = ±.060/FT .XX = ±.030/FT .XXX = ±.010/FT ANGLES = ±.5°</small>		<small>SURFACE FINISH 125 ✓</small>		<small>REMOVE ALL BURRS & BREAK SHARP EDGES .02 MAX</small>	
<small>© 2019 ALL RIGHTS RESERVED</small>		<small>DRWN BY J. Morales</small>		<small>DATE 2/28/2019</small>	
<small>CHKD BY</small>		<small>DATE</small>		<small>DRAWING NO. UVLS100</small>	
<small>APPRD BY</small>		<small>DATE</small>		<small>REV. C</small>	
<small>SCALE: 1:1 (D SCALE)</small>		<small>SHEET 2 OF 2</small>			