

ITEM	QTY	DESCRIPTION/MATERIAL	CUT/ SHEAR	CUT-L	WT EA	REF NO
1	1	DSC7090 TOP ASSEMBLY BOLT DOWN UPPER BUTTRESSES & GATE ARM	-		SEE TABLES 1&2	15679
2	1	DSC7090 M30 HINGE BUTTRESS LOWER WELDMENT	PART	-	1210.17	15728
3	1	DSC7090 M30 RECEIVING BUTTRESS LOWER WELDMENT	PART	-	931.35	15727
4	1	B1216 BETA 11 HPU ALUMINUM ENCLOSURE	-	-	3.79	7476
5	29	HEX NUT, 1-8	PART		0.04	NUT18
6	29	1" FLAT WASHER	-	-	0.00	WAS1
7	29	THREADED ROD 1"-8 GRADE 5	CUT	6	0.14	-
8	1	DSC7090 M30 HINGE BUTTRESS REBAR CAGE	PART	-	269.29	SEE SHEET 2
9	1	DSC7090 M30 RECEIVING SIDE REBAR CAGE			318.96	SEE SHEET 3

OPTIONS	PART NO.
LED FLASHING LIGHTS PACKAGE	B4090
CYLINDER HEATER	B4010
FULLY DOWN / UP LIMIT SWITCHES	B2020 / B2021

TABLE 3

ITEM	WEIGHT
UPPER HINGE BUTTRESS	1450 LB
UPPER RECEIVING BUTTRESS	1150 LB

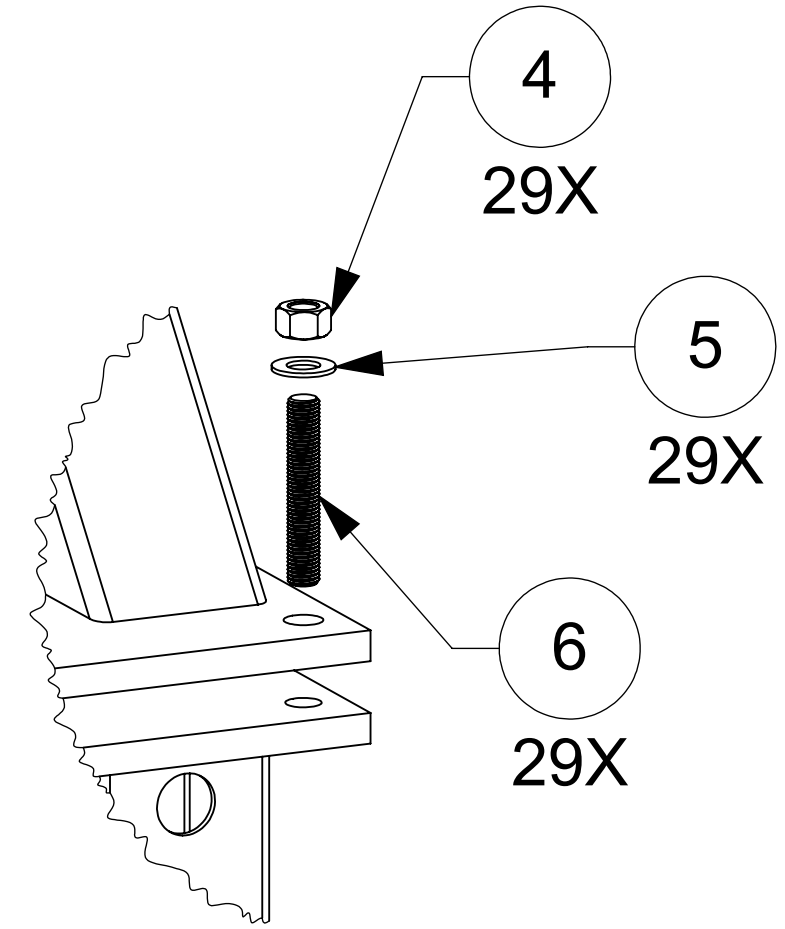
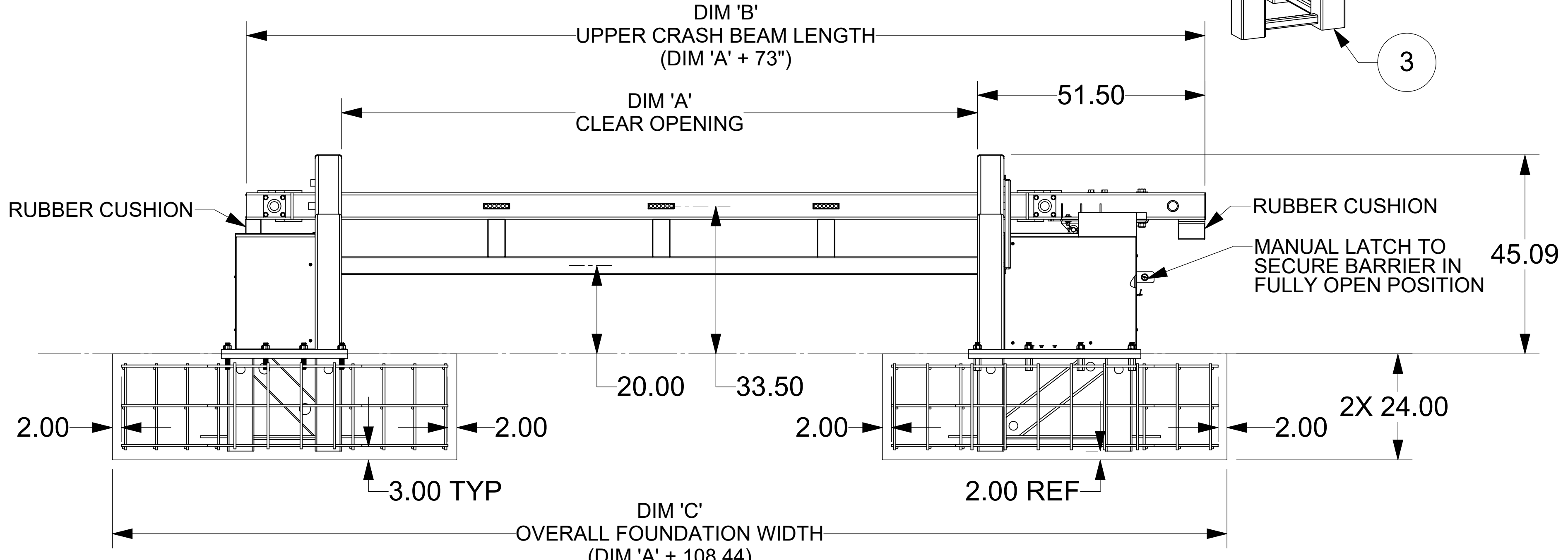
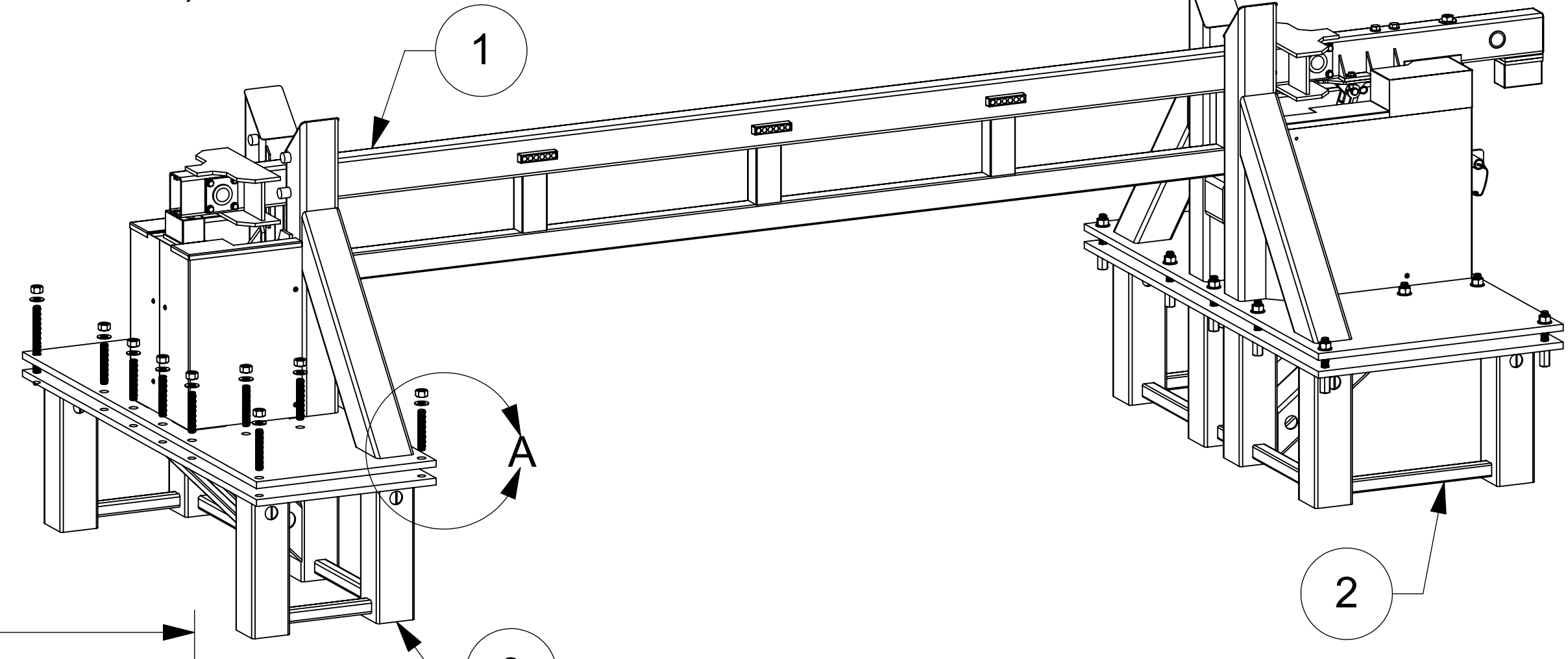
TABLE 2

CONCRETE NOTES & RECOMMENDED SPECIFICATIONS:

- CONTRACTOR SHALL VERIFY AND BE RESPONSIBLE FOR ALL DIMENSIONS AND CONDITIONS AT THE JOB SITE.
- FOUNDATION CONCRETE MAY BE PLACED DIRECTLY INTO NEAT EXCAVATIONS, PROVIDED THE SIDES OF THE EXCAVATION ARE STABLE. WHERE CAVING OCCURS, PROVIDE SHORING. TYPE AND METHOD OF SHORING SHALL BE AT CONTRACTORS OPTION.
- THE EXCAVATION SHALL BE KEPT DRY AT ALL TIMES. GROUND WATER, IF ENCOUNTERED, SHALL BE PUMPED FROM THE EXCAVATION.
- CONCRETE SHALL BE LABORATORY DESIGNED, MACHINE MIXED, PRODUCING 3,000 PSI (20,68 MPa) AT 28 DAYS.
- CEMENT SHALL BE TESTED PORTLAND CEMENT CONFORMING TO ASTM C150, TYPE II ONLY.
- AGGREGATES SHALL CONFORM TO ASTM C33 & B GRADE PER STANDARD SPECIFICATIONS. MAXIMUM SIZE OF AGGREGATE SHALL BE 1-1/2 INCHES (38mm).
- REINFORCING STEEL SHALL BE DEFORMED BARS CONFORMING TO ASTM A615, GRADE 60 (60,000 PSI OR 413.7MPa).
- HOOKS AND BENDS SHALL CONFORM TO ACI STANDARD 318, LATEST REVISION. INSIDE DIAMETER OFF HOOKS AND BENDS SHALL BE AT LEAST SIX (6) BAR DIAMETERS.
- PROVIDE SPACER BARS, CHAIRS, SPREADERS, BLOCKS, ETC. AS REQUIRED TO POSITIVELY HOLD THE STEEL IN PLACE BEFORE CONCRETE IS POURED.
- CONCRETE SHALL BE CONVEYED FROM THE MIXER TO FINAL DEPOSIT BY METHODS THAT WILL PREVENT SEPARATION OR LOSS OF MATERIALS.
- CONCRETE SHALL BE THOROUGHLY CONSOLIDATED BY SUITABLE MEANS DURING PLACEMENT AND SHALL BE THOROUGHLY WORKED AROUND REINFORCEMENT AND EMBEDDED FIXTURES AND CORNERS OF FORMS.
- CONCRETE SHALL BE MAINTAINED ABOVE 50°F (10°C) AND IN A MOIST CONDITION FOR AT LEAST SEVEN (7) DAYS AFTER PLACEMENT. ADEQUATE EQUIPMENT SHALL BE PROVIDED FOR HEATING CONCRETE MATERIALS AND PROTECTING CONCRETE DURING FREEZING OR NEAR FREEZING WEATHER.
- WHERE EXTERIOR WALL FACE REQUIRES SHORING AND/OR FORMING, THE FORMS SHALL BE SUBSTANTIAL AND SUFFICIENTLY TIGHT TO PREVENT LEAKAGE. FORMS SHALL NOT BE REMOVED UNTIL THE CONCRETE IS SEVEN (7) DAYS OLD.
- BACKFILLING SHALL BE DONE BY DEPOSITING AND TAMPING INTO PLACE CLEAN SAND OR POURING LEAN CONCRETE, TO 95% COMPACTION. WATER JETTING SHALL NOT BE ALLOWED.
- CONDUITS AND PIPES OF ALUMINUM SHALL NOT BE ALLOWED.
- CONSTRUCTION JOINTS NOT INDICATED ON THE DRAWINGS SHALL NOT BE ALLOWED. WHERE A CONSTRUCTION JOINT IS TO BE MADE, THE SURFACE OF THE CONCRETE SHALL BE THOROUGHLY CLEANED AND ALL LAITANCE AND STANDING WATER REMOVED.
- CONTRACTOR SHALL BE RESPONSIBLE FOR THE PROTECTION OF ALL ADJACENT AREAS AGAINST DAMAGE AND SHALL REPAIR OR PATCH ALL DAMAGED AREAS TO MATCH EXISTING IMPROVEMENTS.
- CONTRACTOR SHALL KEEP THE CONSTRUCTION AREA CLEAN AT ALL TIMES AND AT COMPLETION OF WORK, REMOVE ALL SURPLUS MATERIALS, EQUIPMENT AND DEBRIS AND LEAVE THE PREMISES IN A CLEAN CONDITION ACCEPTABLE TO THE OWNER OR OWNER'S REPRESENTATIVE.

CLEAR OPENING 'A' (FEET):	12 FT	13 FT	14 FT	15 FT	16 FT	17 FT	18 FT	19 FT	20 FT	21 FT	22 FT	23 FT	24 FT	25 FT
CLEAR OPENING 'A' (INCHES):	144 IN	156 IN	168 IN	180 IN	192 IN	204 IN	216 IN	228 IN	240 IN	252 IN	264 IN	276 IN	288 IN	300 IN
DIM 'B' (INCHES)	217 IN	229 IN	241 IN	253 IN	265 IN	277 IN	289 IN	301 IN	313 IN	325 IN	337 IN	349 IN	361 IN	373 IN
DIM 'C' (INCHES)	252.4 IN	264.4 IN	276.4 IN	288.4 IN	300.4 IN	312.4 IN	324.4 IN	336.4 IN	348.4 IN	360.4 IN	372.4 IN	384.4 IN	396.4 IN	408.4 IN
CRASH BEAM WEIGHT (POUNDS)	547 LB	573 LB	596 LB	618 LB	645 LB	667 LB	689 LB	716 LB	738 LB	761 LB	787 LB	809 LB	832 LB	854 LB

TABLE 1



DETAIL A  
SCALE 1:6

REV.	DESCRIPTION	DRWN BY	DATE	APPVD BY	DATE
A	ECO 2019-104	AWL	10/30/2019		
B	ECO 2020-006	AWL	1/28/2020		
C	ECO 2020-32	MO	4/1/2020		
D	ECO 2020-074	AWL	7/6/2020		
E	ECO 2020-125	MO	11/16/20		

THIS DRAWING UNLESS OTHERWISE NOTED, REMAINS THE CONFIDENTIAL PROPERTY AND TRADE SECRET OF DELTA SCIENTIFIC CORPORATION. IT SHALL NOT BE REPRODUCED, REPRODUCED OR USED FOR MANUFACTURE, DESIGN OR CONSTRUCTION WITHOUT THE EXPRESS AUTHORIZATION OF DELTA SCIENTIFIC CORPORATION. THE RECIPENT BY ACCEPTING THIS DRAWING ASSUMES CUSTODY THEREOF AND UNDER THE ABOVE TERMS AGREES NOT TO ALLOW USE OF BY UNAUTHORIZED PERSONS.

UNLESS OTHERWISE NOTED DIMENSIONS ARE IN INCHES

TOLERANCES  
X = ± .060FT  
XX = ± .030FT  
XXX = ± .010FT  
ANGLES = ± 5°

SURFACE FINISH  
M.O. 125 ✓

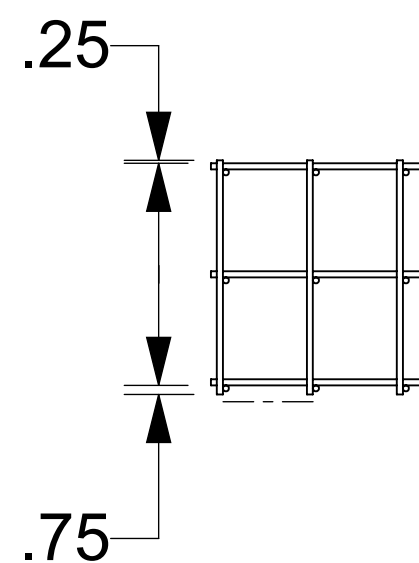
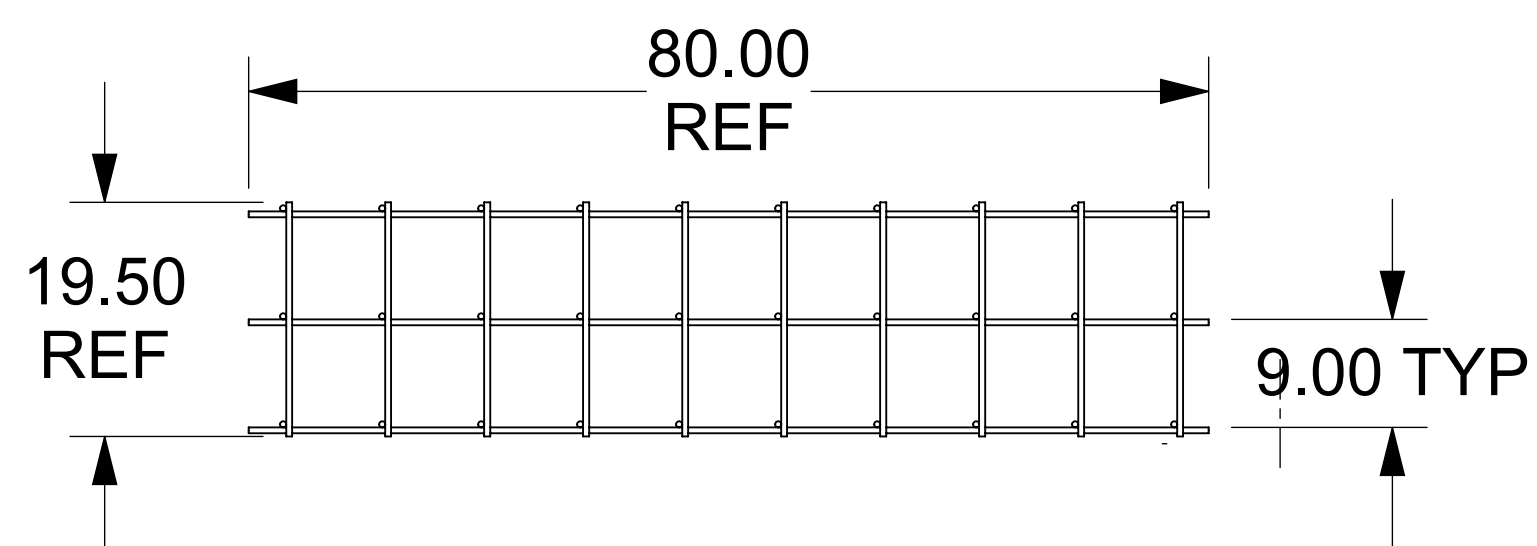
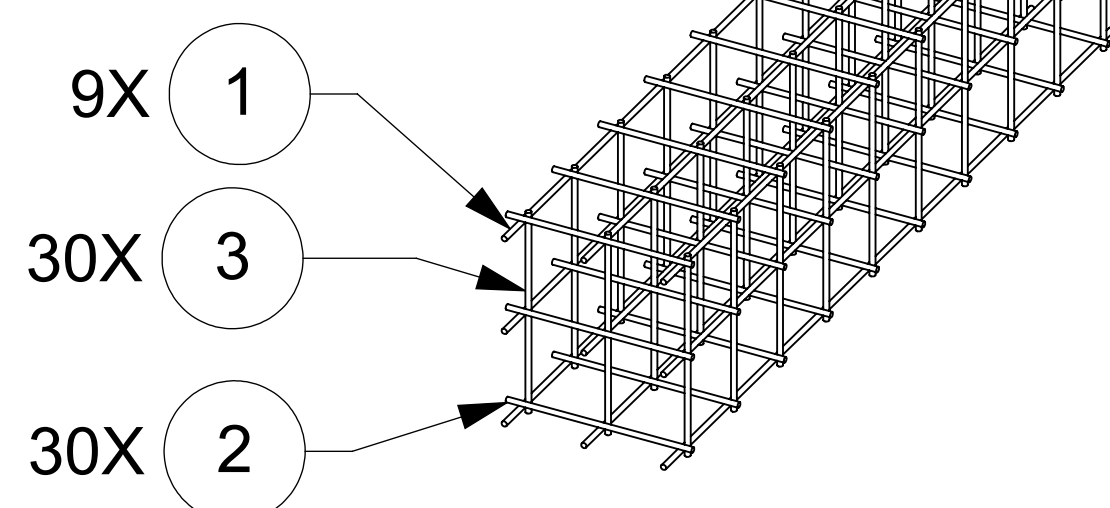
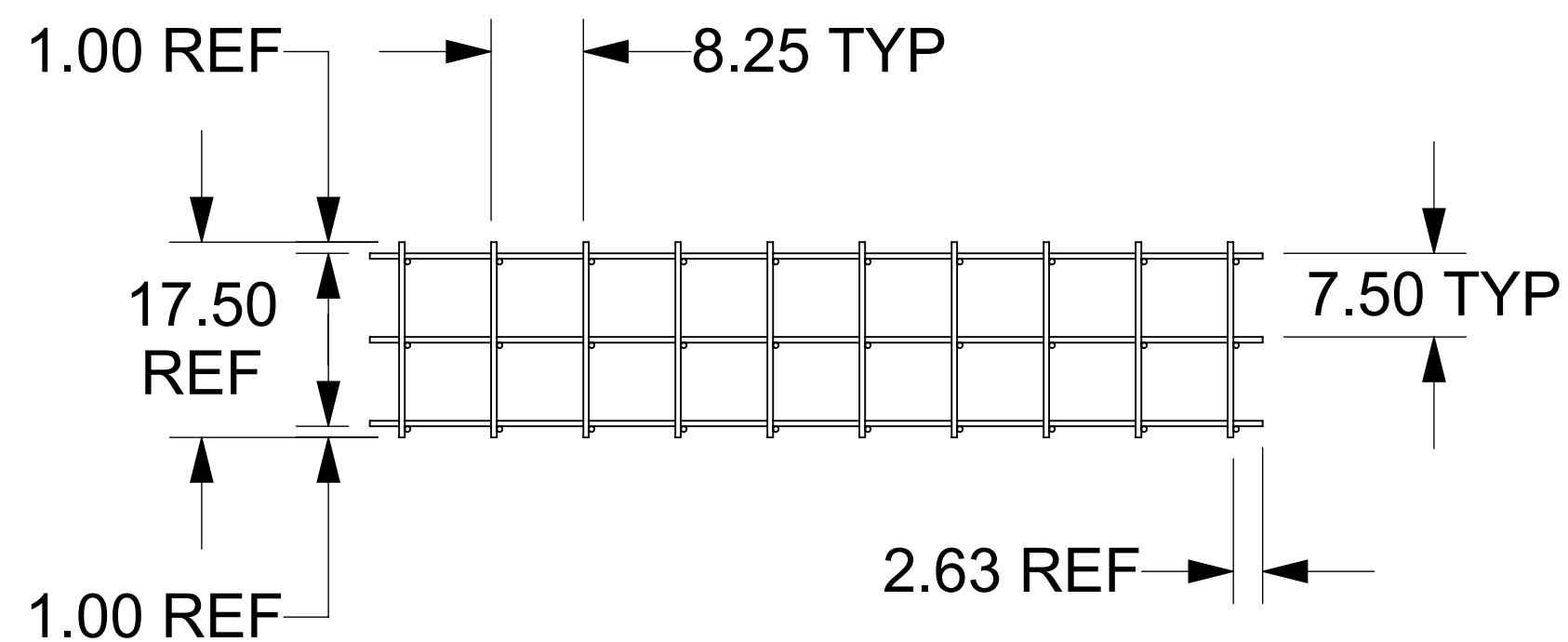
REMOVE ALL BURRS AND BREAK SHARP EDGES .02 MAX

**DELTA SCIENTIFIC CORPORATION**  
40355 DELTA LANE  
PALMDALE, CA 93551 U.S.A.  
(661) 575-1000 FAX (661) 575-1109

**DSC7090 M30 BOLT DOWN**  
GENERAL ARRANGEMENT / FOUNDATION SPEC

DRAWN BY: M.O. DATE: 9/13/2019 DRAWING NO: 15718 REV: E  
CHKD BY: DATE: APPV BY: DATE: SCALE: 1:18 SHEET 1 OF 3

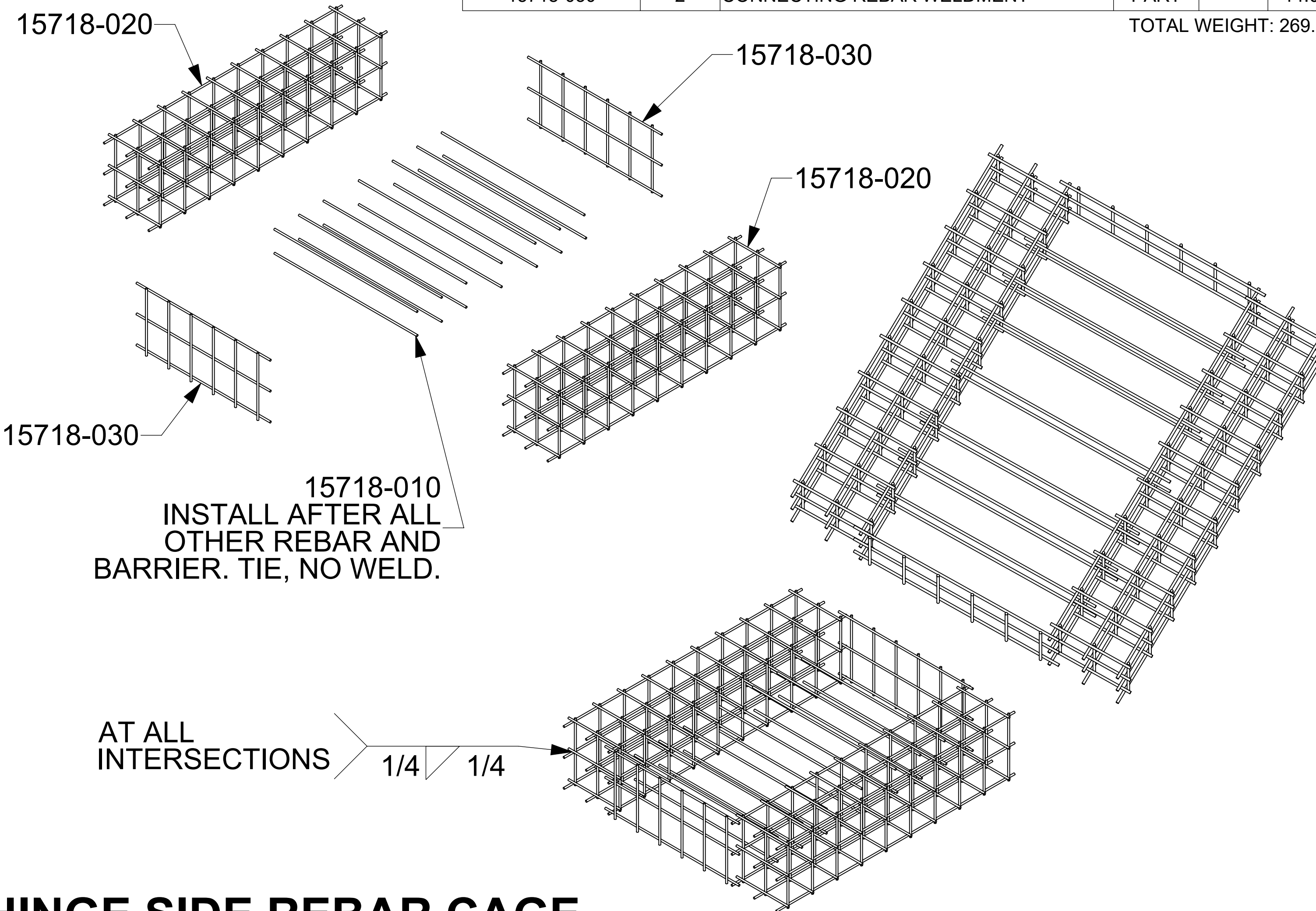
ITEM	QTY	DESCRIPTION/MATERIAL	CUT/SHEAR	CUT-L	ENDCUT	WT EA
1	9	1/2" REBAR	CUT	80.00	90/90	4.45
2	30	1/2" REBAR	CUT	17.50	90/90	0.97
3	30	1/2" REBAR	CUT	19.50	90/90	1.09



**15718-020  
LARGE SECTION  
REBAR WELDMENT**

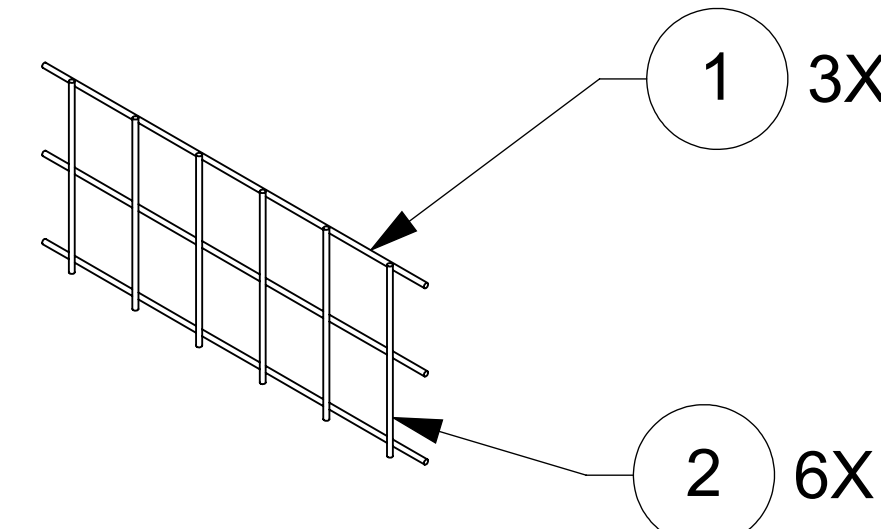
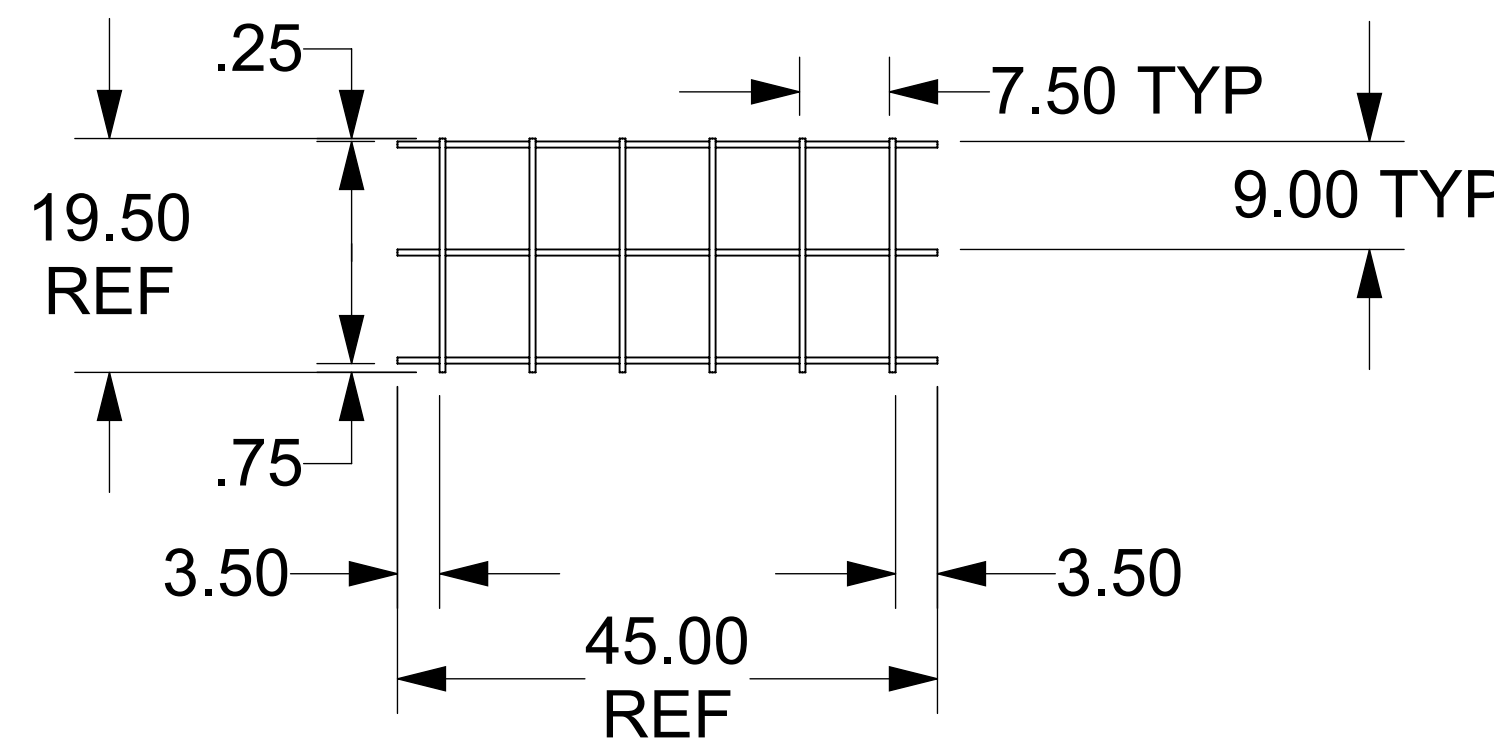
WELDMENT/PARTS	REQ'D	DESCRIPTION/MATERIAL	CUT/SHEAR	CUT-L	WT EA
15718-010	14	1/2" REBAR 48.00 LONG	CUT	48.00	2.67
15718-020	2	LARGE SECTION REBAR WELDMENT	PART	-	101.90
15718-030	2	CONNECTING REBAR WELDMENT	PART	-	14.03

TOTAL WEIGHT: 269.29



**HINGE SIDE REBAR CAGE**

ITEM	QTY	DESCRIPTION/MATERIAL	CUT/SHEAR	CUT-L	ENDCUT	WT EA
1	3	1/2" REBAR	CUT	45.00	90/90	2.51
2	6	1/2" REBAR	CUT	19.50	90/90	1.09



**15718-030  
CONNECTING REBAR  
WELDMENT**

THIS DRAWING UNLESS OTHERWISE NOTED, REMAINS THE CONFIDENTIAL PROPERTY AND TRADE SECRET OF DELTA SCIENTIFIC CORPORATION. IT SHALL NOT BE DISCLOSED, REPRODUCED OR USED FOR MANUFACTURE, DESIGN OR CONSTRUCTION WITHOUT THE EXPRESS AUTHORIZATION OF DELTA SCIENTIFIC CORPORATION. THE RECIPIENT BY ACCEPTING THIS DRAWING ASSUMES CUSTODY THEREOF AND UNDER THE ABOVE TERMS AGREES NOT TO ALLOW USE OF BY UNAUTHORIZED PERSONS.

UNLESS OTHERWISE NOTED DIMENSIONS ARE IN INCHES

TOLERANCES  
X = ± .060/FT  
XX = ± .030/FT  
XXX = ± .010/FT  
ANGLES = ± 5°

SURFACE FINISH  
125 ✓

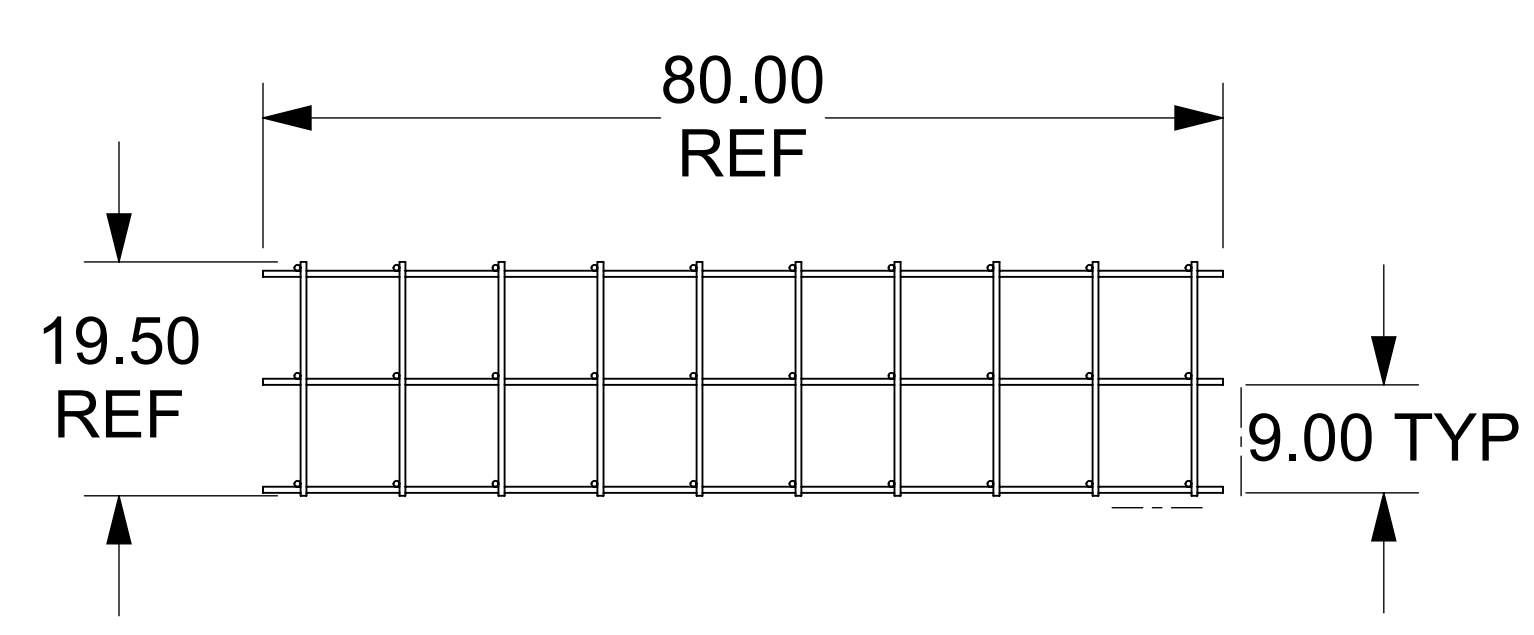
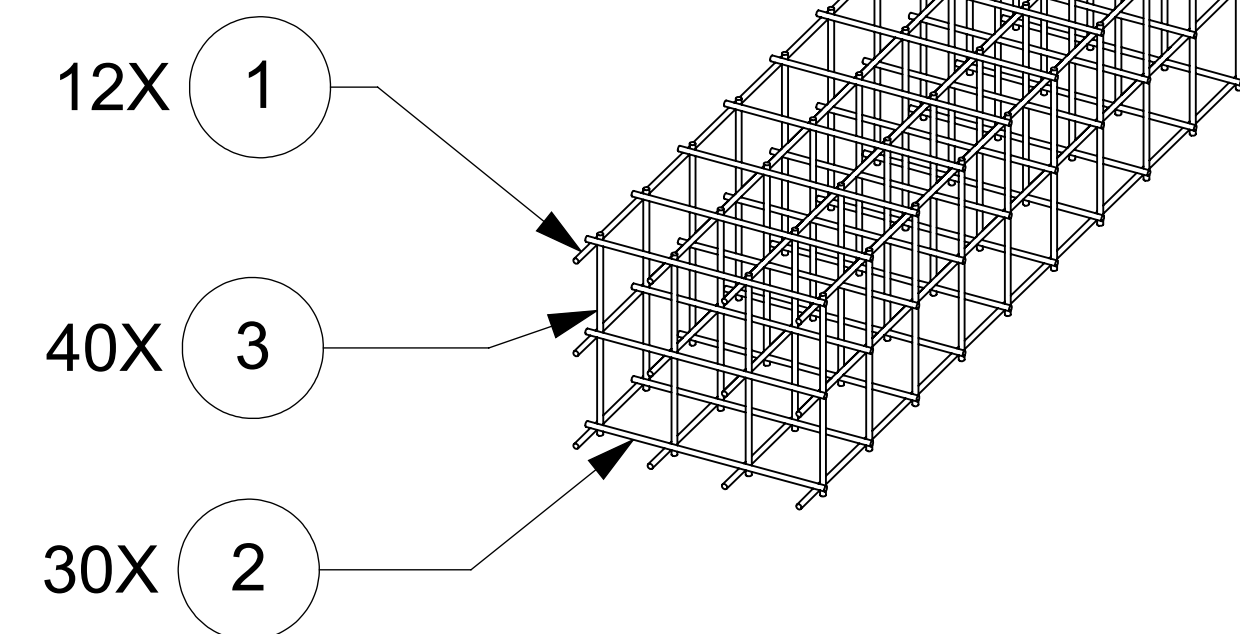
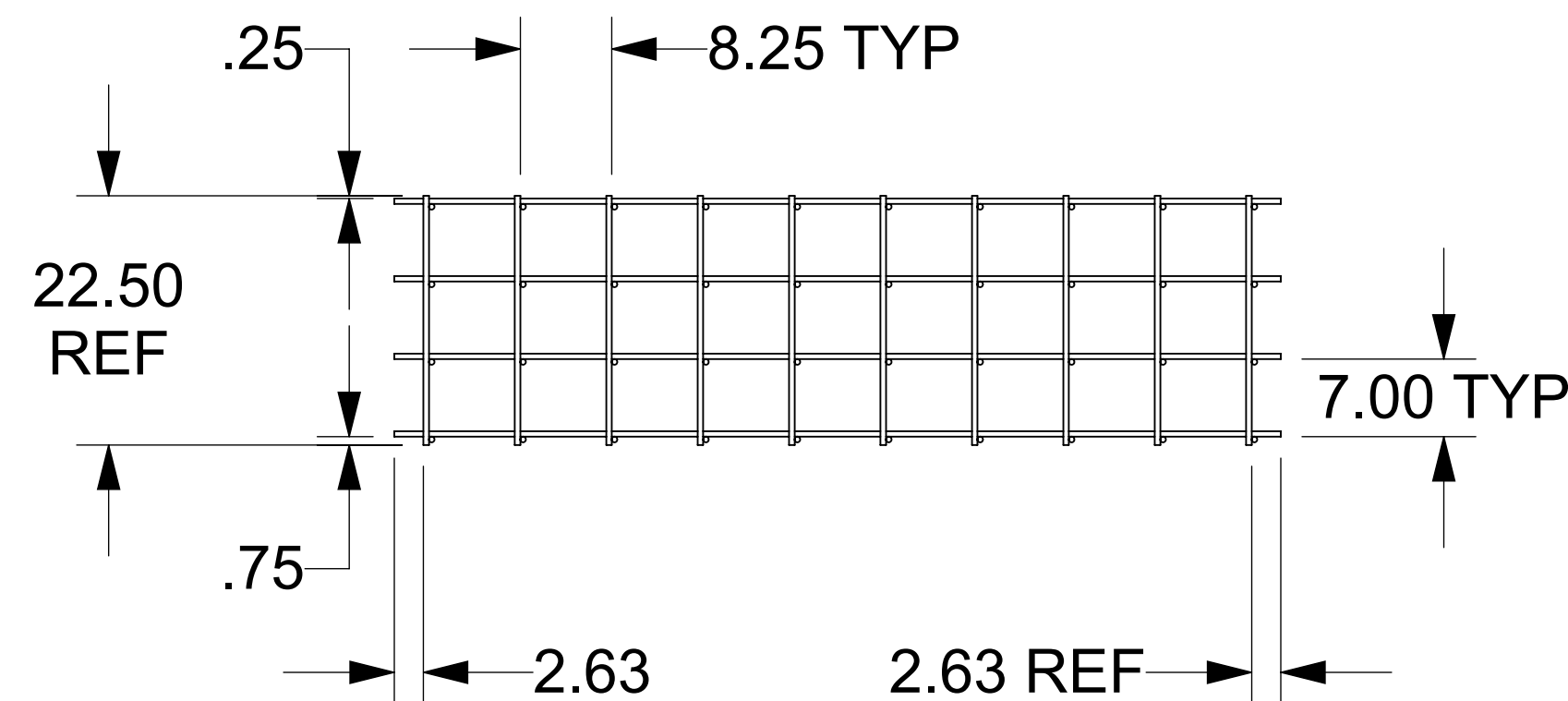
REMOVE ALL BURRS AND BREAK SHARP EDGES .02 MAX

**DELTA SCIENTIFIC CORPORATION**  
40355 DELTA LANE  
PALMDALE, CA 93551 U.S.A.  
(861) 575-1000 FAX (861) 575-1109

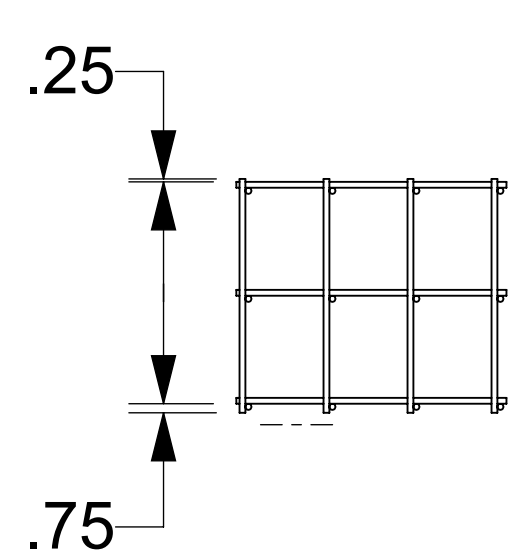
**DSC7090 M30 BOLT DOWN  
GENERAL ARRANGEMENT / FOUNDATION SPEC**

DRAWN BY M.O.	DATE 9/13/2019	DRAWING NO. <b>15718</b>	REV. <b>E</b>
CHKD BY	DATE	SCALE: 1:16	SHEET SHEET 2 OF 3
APPV BY	DATE		

ITEM	QTY	DESCRIPTION/MATERIAL	CUT/SHEAR	CUT-L	ENDCUT	WT EA
1	12	1/2" REBAR	CUT	80.00	90/90	4.45
2	30	1/2" REBAR	CUT	22.50	90/90	1.25
3	40	1/2" REBAR	CUT	19.50	90/90	1.09

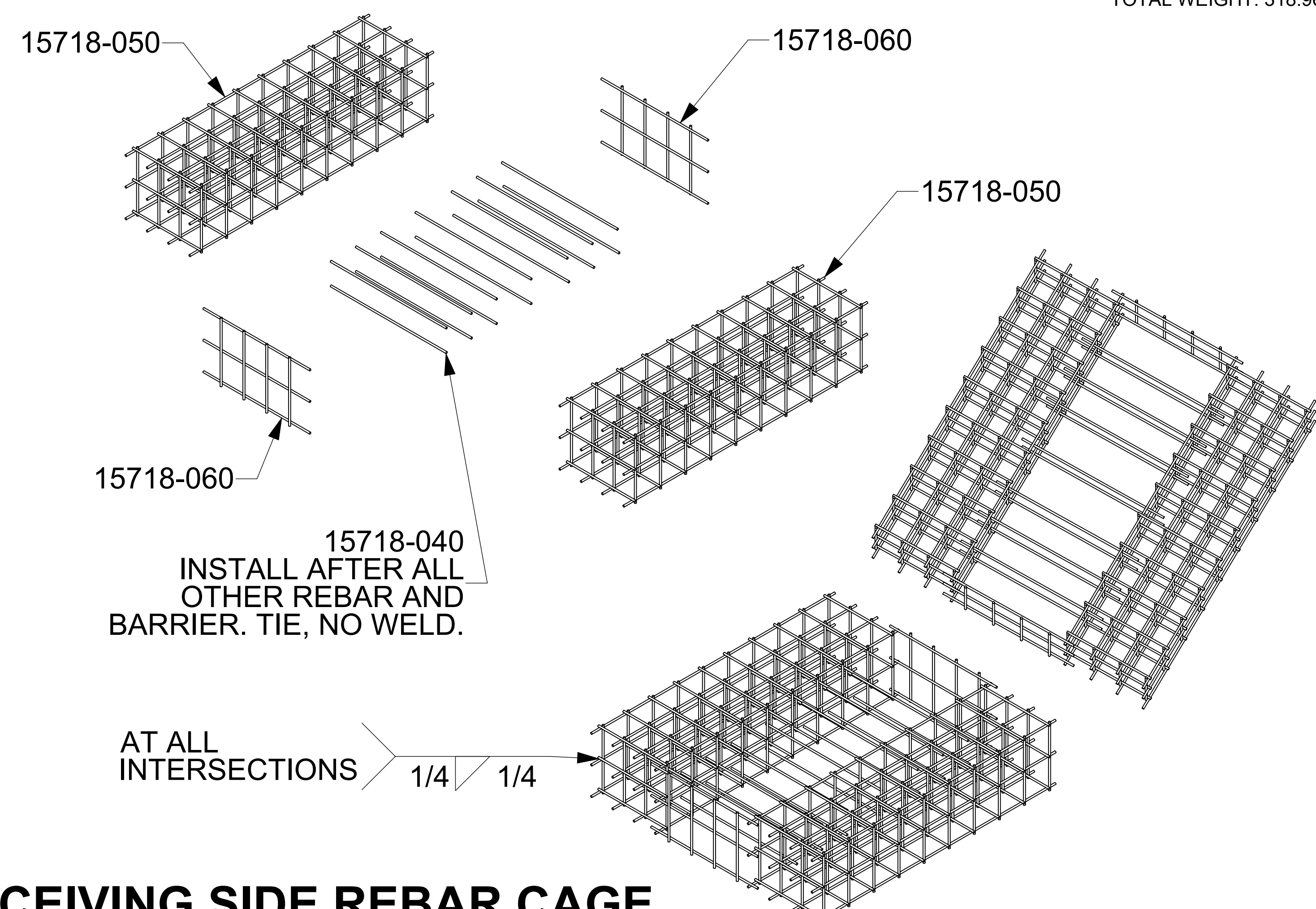


**15718-050  
LARGE SECTION  
REBAR WELDMNT**



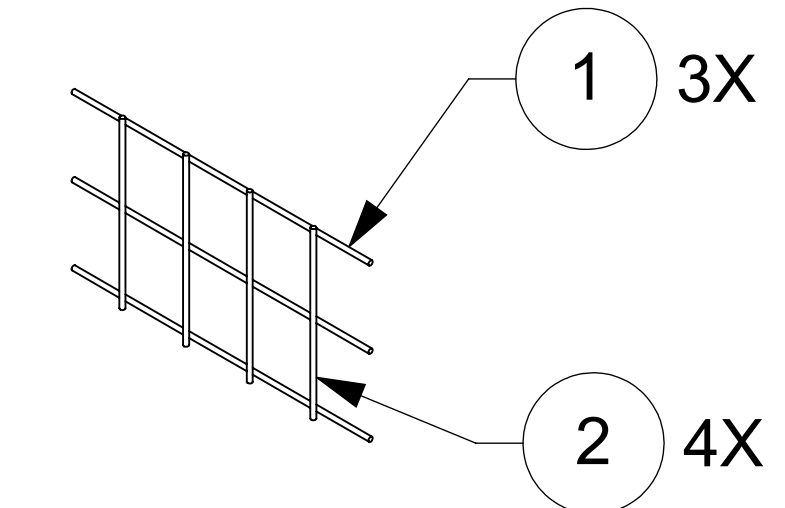
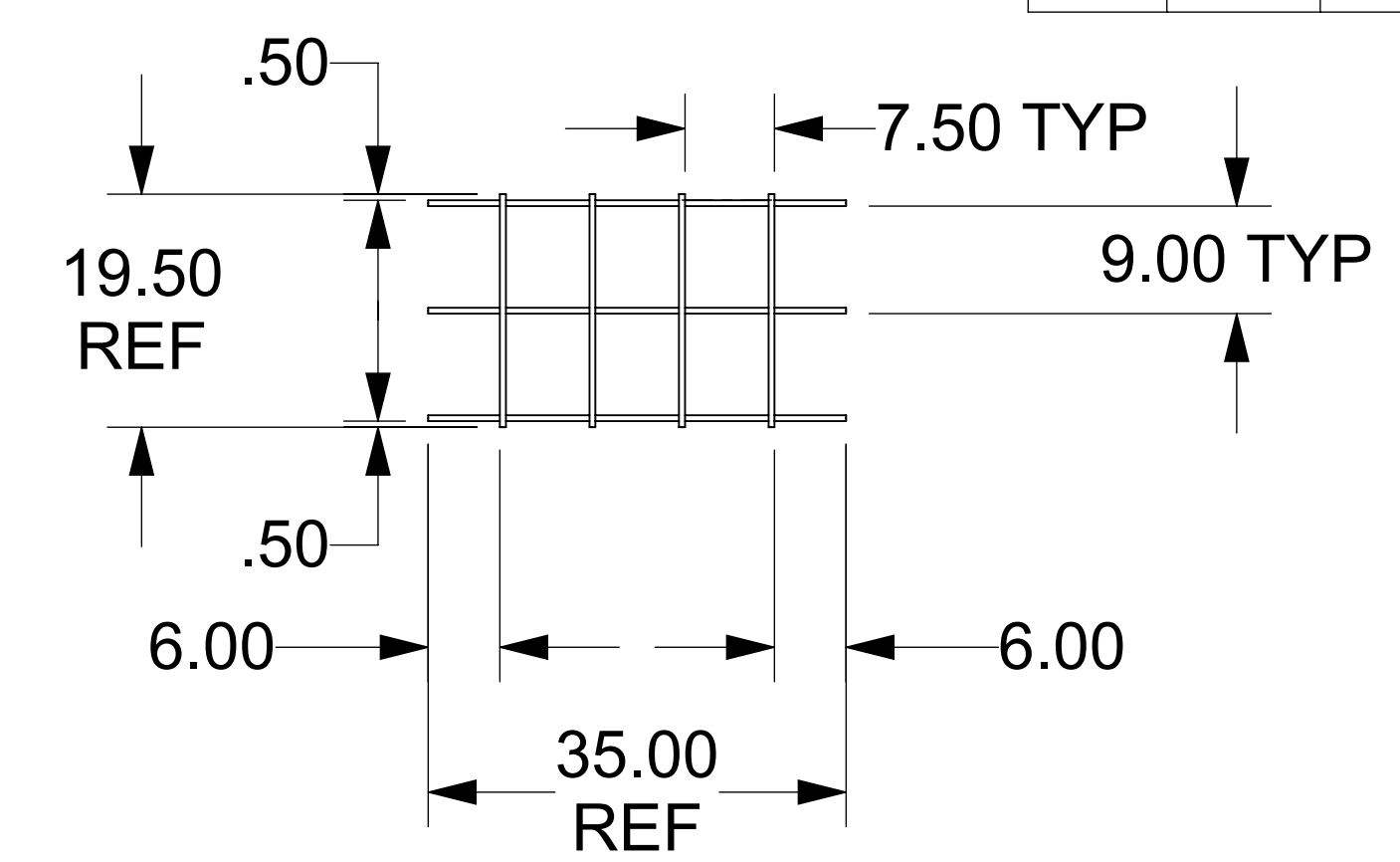
WELDMNT/PARTS	REQ'D	DESCRIPTION/MATERIAL	CUT/SHEAR	CUT-L	WT EA
15718-040	14	1/2" REBAR 38.00 LONG	CUT	38.00	2.12
15718-050	2	LARGE SECTION REBAR WELDMNT	PART	-	134.48
15718-060	2	CONNECTING REBAR WELDMNT	PART	-	10.19

TOTAL WEIGHT: 318.96



**RECEIVING SIDE REBAR CAGE**

ITEM	QTY	DESCRIPTION/MATERIAL	CUT/SHEAR	CUT-L	ENDCUT	WT EA
1	3	1/2" REBAR	CUT	35.00	90/90	1.95
2	4	1/2" REBAR	CUT	19.50	90/90	1.09



**15718-060  
CONNECTING REBAR  
WELDMNT**

THIS DRAWING UNLESS OTHERWISE NOTED, REMAINS THE CONFIDENTIAL PROPERTY AND TRADE SECRET OF DELTA SCIENTIFIC CORPORATION. IT SHALL NOT BE REPRODUCED, REPRODUCED OR USED FOR MANUFACTURE, DESIGN OR CONSTRUCTION WITHOUT THE EXPRESS AUTHORIZATION OF DELTA SCIENTIFIC CORPORATION. THE RECIPIENT BY ACCEPTING THIS DRAWING ASSUMES CUSTODY THEREOF AND UNDER THE ABOVE TERMS AGREES NOT TO ALLOW USE OF BY UNAUTHORIZED PERSONS.

UNLESS OTHERWISE NOTED DIMENSIONS ARE IN INCHES

TOLERANCES  
X = ± .060/FT  
XX = ± .030/FT  
XXX = ± .010/FT  
ANGLES = ± 5°

SURFACE FINISH  
125 ✓

REMOVE ALL BURRS AND BREAK SHARP EDGES .02 MAX

**DELTA SCIENTIFIC CORPORATION**  
40355 DELTA LANE  
PALMDALE, CA 93551 U.S.A.  
(861) 575-1000 FAX (861) 575-1109

**DSC7090 M30 BOLT DOWN  
GENERAL ARRANGEMENT / FOUNDATION SPEC**

DRAWN BY M.O.	DATE 9/13/2019	DRAWING NO. <b>15718</b>	REV. E
CHKD BY	DATE	SCALE: 1:16	SHEET SHEET 3 OF 3
APPV BY	DATE		