

- ◆ **TERMS AND CONDITIONS / WARRANTY**
- ◆ **INSTALLATION**
- ◆ **DRAWINGS**
- ◆ **PRODUCT SPEC SHEETS**



**CORPORATE HEADQUARTERS**  
40355 Delta Lane  
Palmdale, California 93551  
Phone: (661) 575-1100  
Fax: (661) 575-1109  
Email: [info@deltascientific.com](mailto:info@deltascientific.com)



#### TERMS AND CONDITIONS OF PRODUCT SALE

THIS PURCHASE CONTRACT ("CONTRACT") SETS FORTH THE TERMS AND CONDITIONS FOR THE SALE BY DELTA SCIENTIFIC CORPORATION ("DELTA") TO THE BUYER SPECIFIED HEREIN ("BUYER") OF THE PRODUCTS SPECIFIED IN THE QUOTATION IDENTIFIED BELOW (THE "PRODUCTS"). THIS CONTRACT DOES NOT CONSTITUTE ACCEPTANCE OF ANY OFFER BY BUYER, WHETHER ORAL OR WRITTEN, INCLUDING BUT NOT LIMITED TO ANY PURCHASE ORDER, LETTER, E-MAIL, MEMO, OR ANY OTHER FORM. SALES OF THE PRODUCTS ARE LIMITED SOLELY TO THIS CONTRACT.

**Acceptance.** Buyer accepts these terms and conditions when the first of the following occurs: Buyer (a) signs or makes a written acceptance of this Contract; (b) authorizes production or shipment of any part of the Products; or c) accepts Delta's Product submittals. Acceptance is expressly limited to all terms and conditions hereof without any addition, modification or exception, and Delta expressly rejects any additional or inconsistent terms, conditions, contingencies or covenants previously or hereafter proposed by Buyer. This Contract, when accepted by Delta at its corporate offices in California, constitutes the entire agreement between Delta and Buyer, superseding any prior agreement or understanding between the parties with respect to the subject matter hereof.

1. **Shipment and Delivery.** Buyer acknowledges that this Contract, and any additional Buyer orders accepted by Delta hereunder, are firm and non-cancelable. Deliveries of the Products will be made F.O.B. Delta's plant at Palmdale, California. Delta will arrange for shipment. Buyer will bear all costs of shipment and insurance and will reimburse all such costs incurred by Delta when invoiced. Upon Delta's delivery of the Products at Delta's plant to any carrier or Buyer's representative, Buyer assumes all risk of loss and damage with respect to the Products. Buyer shall promptly inspect each shipment upon receipt, and shall promptly inform Delta in the event all Products listed in Delta's shipping documents do not arrive as scheduled or are damaged or defective.
2. **Payment Terms.** If credit is approved in advance by Delta, payment terms are net thirty (30) days from the date of invoice. If credit is not approved in advance, Buyer shall make payment in full prior to delivery. Delta's invoice will be issued and dated upon date of shipment of Products. All payments shall be made at Palmdale, California. Unpaid invoices shall bear interest at the maximum lawful rate or 1.5% per month, whichever is less, commencing upon the date payment is due. Buyer shall be responsible for all costs of collection, including but not limited to reasonable attorneys' fees and expenses.
3. **Taxes and Similar Charges.** Buyer shall bear all applicable federal, state, municipal and other taxes (such as sales, use, excise, ad valorem and similar taxes), customs duties and charges. The lack of any such tax or charge on the invoice shall not affect Buyer's tax liability.
4. **Use and Permits.** Buyer will be responsible for operation of Products, including, but not limited to, obtaining all use and export permits, building permits, licenses, certificates and the like, required by any regulatory body for installation and use of the Products. If Buyer wishes for Delta to install any Products purchased hereunder, the terms and conditions of installation shall be set forth in a separate agreement.
5. **Limited Warranty; Limitation of Liability.** Delta warrants that during the warranty period applicable to the product, the Products will be free from defect in material and workmanship. Delta's sole obligation under this warranty shall be to repair (or at Delta's option, to replace), FOB Palmdale, California any defective product, without charge to Buyer, provided that: (a) Buyer gives Delta written notice of any claimed defect within the applicable limited warranty period; (b) the Products, if installed, were installed correctly and in accordance with any instructions provided by Delta, (c) the Products have not been altered, subjected to misuse, negligence or accident, or used with parts not authorized by Delta, (d) the Products have been properly and timely maintained by Buyer in accordance with the preventive maintenance instructions provided, and (e) the replaced Product(s) and/or part(s) is/are properly removed and returned to Delta, using the Material Return Authorization (MRA) number and information provided by Delta. Product and Product part troubleshooting, diagnosis and/or replacement, and the cost of such replacement installation and/or related remedial services, are the sole responsibility of Buyer. The duration of the applicable Product warranty is ninety (90) days for guard booths, gates, traffic items and spare parts and one (1) year for Delta's Barricade/Barrier Systems, from date of shipment. Primer, paint and other surface coatings are excluded from warranty. FAILURE BY BUYER TO MAKE TIMELY PAYMENT IN FULL FOR THE PRODUCTS, AND/OR FAILURE BY BUYER TO PROPERLY AND TIMELY CONDUCT PREVENTIVE MAINTENANCE, FAILURE TO FOLLOW DELTA'S INSTRUCTIONS FOR PROBLEM TROUBLESHOOTING AND/OR DIAGNOSIS, AND/OR FAILURE TO PROPERLY INSTALL, REMOVE AND/OR RE-INSTALL A PRODUCT OR PART THEREOF, INVALIDATES THIS WARRANTY. IN THE EVENT A PRODUCT PROBLEM IS NOT THE RESULT OF A PRODUCT DEFECT, BUYER SHALL BE RESPONSIBLE FOR MAINTENANCE CHARGES AT DELTA'S STANDARD TIME AND MATERIALS RATES. NO OTHER WARRANTY IS EXPRESSED AND NONE SHALL BE IMPLIED, INCLUDING WITHOUT LIMITATION THE WARRANTY OF MERCHANTABILITY OR WARRANTY OF FITNESS FOR USE OR FOR A PARTICULAR PURPOSE. THE FOREGOING STATES DELTA'S ENTIRE LIABILITY WITH RESPECT TO THE PRODUCTS. IN NO EVENT SHALL DELTA BE LIABLE FOR ANY SPECIAL, INCIDENTAL OR CONSEQUENTIAL DAMAGES WHICH RESULT FROM THE USE OF THE PRODUCTS BY BUYER OR ANY OTHER PARTY, AND IN NO EVENT SHALL DELTA'S LIABILITY EXCEED THE PRICE OF THE PARTICULAR PRODUCT UNIT(S) INVOLVED IN ANY CLAIM.
6. **Disclaimer and Indemnification.** Buyer acknowledges that the Products, designed for control of vehicular traffic, inherently involve a trade off of risk versus benefit. Buyer must devote careful consideration to the selection, placement and design of a barricade installation. To ensure approaching vehicles and pedestrians are fully aware of the Barricades and their operation, proper illumination, clearly worded warning signs, auxiliary devices such as semaphore gates, stop-go signal lights, audible warning devices, speed bumps, flashing lights, beacons, etc. should be considered. It is strongly recommended that the Buyer consult an architect and/or a traffic and/or safety engineer prior to installation of a Barricade/Barrier system. Delta does not purport to offer either architectural, traffic or safety engineering information. Buyer also concedes that, beyond its written installation, maintenance and operation instructions, Delta has no control as to how the Products will be utilized, or how persons in the vicinity of the Products, including but not limited to drivers, bicyclists and/or pedestrians, will act. Therefore, Buyer shall hold harmless, indemnify and defend Delta from and against all claims, demands, judgments and awards resulting from Buyer's use or misuse of the Products, including, but not limited to, claims for personal injury, wrongful death and damage to real or personal property. However, in no event shall this indemnification provision apply where Delta's sole negligence resulted in the claim, judgment or award. Each party shall give the other party prompt written notice of any claim or suit for which such other party is responsible hereunder. The responsible party shall control the defense and/or settlement of such claim; provided that neither party has the authority to enter into a settlement, make an admission, or undertake any obligation or liability without the other party's written consent.
7. **General.** Delta shall not be liable for any delays or failure of performance, beyond the reasonable control of Delta, that affect Delta or any of Delta's suppliers; including, but not limited to, those caused by acts of God, acts of public enemy, acts or omissions of Buyer or its contractors and sub-contractors, fire, strike, riot, flood, governmental interference, unavailability or shortage of materials, labor, fuel or power through normal commercial channels, or failure or destruction of plant or equipment arising from any cause whatsoever. In the event of delay, the date of delivery shall be extended for a period equal to the time lost by such delay, and this Contract shall remain in full force and effect. This Contract may be modified only in writing. This Contract shall be governed by and construed in accordance with the laws of the state of California. Neither this Contract nor any rights or benefits hereunder are assignable by Buyer without prior written consent of Delta. Any such prohibited assignment shall be null and void. Notices shall be given in writing, via certified or overnight mail with proof of deliver, to an authorized representative or officer of a party.

ACCEPTED BY: \_\_\_\_\_  
NAME: \_\_\_\_\_  
DATE: \_\_\_\_\_

DELTA SCIENTIFIC CORP  
NAME: \_\_\_\_\_  
DATE: \_\_\_\_\_

QUOTE NO: \_\_\_\_\_  
REV / DATE: \_\_\_\_\_



### **WARRANTY AND LIMITATION OF LIABILITY**

Delta Scientific Corporation warrants that during the first one year (365) days from date of shipment, the Products will be free from defect in material and workmanship. Delta's sole obligation under this warranty shall be to repair (or at Delta's option, to replace), FOB: Palmdale, California, any defective product, without charge to Buyer, provided that, (a). Buyer gives Delta written notice of any such claimed defect within such period of one year (365) days, (b). The Products, if installed, were installed by a Delta authorized installer, (c). The Products have not been altered, subjected to misuse, negligence or accident, or used with parts not authorized by Delta, and (d). The Products have been maintained in accordance with the instructions provided. NO OTHER WARRANTY IS EXPRESSED AND NONE SHALL BE IMPLIED, INCLUDING WITHOUT LIMITATION THE WARRANTY OF MERCHANTABILITY OR WARRANTY OF FITNESS FOR USE OR FOR A PARTICULAR PURPOSE. THE FOREGOING STATES DELTA'S ENTIRE LIABILITY WITH RESPECT TO THE PRODUCTS. IN NO EVENT SHALL DELTA BE LIABLE FOR ANY SPECIAL, INCIDENTAL OR CONSEQUENTIAL DAMAGES WHICH RESULT FROM THE USE BY BUYER OR ANY OTHER PARTY, OF THE PRODUCTS, AND IN NO EVENT SHALL DELTA'S LIABILITY EXCEED THE AMOUNTS PAID BY BUYER FOR THE PRODUCTS HEREUNDER.

### **DISCLAIMER**

Please note - careful consideration must be devoted to the selection, placement and design of a Barricade installation. Just as in the case of any Barricade system, perimeter security device or security gate that blocks a roadway or drive, care must be taken to ensure that approaching vehicles as well as pedestrians are fully aware of the Barricades and their operation. Proper illumination, clearly worded warning signs, auxiliary devices such as semaphore gates, stop-go signal lights, audible warning devices, speed bumps, flashing lights, beacons, etc. should be considered. Delta has information available on many such auxiliary safety equipment not specifically listed herein. It is strongly recommended that an architect and/or a traffic and/or safety engineer be consulted prior to installation of a Barricade system. Delta will offer all possible assistance in designing the operating equipment, controls and the overall system, but we are not qualified, nor do we purport to offer either traffic or safety engineering information.

### **INTELLECTUAL PROPERTY, DRAWINGS, SPECIFICATIONS AND TECHNICAL DATA**

The drawings and/or data included with this equipment unless otherwise noted remain the confidential property and trade secret of Delta Scientific Corporation. They shall not be disclosed, reproduced or used for manufacture, design or construction without the express authorization of Delta Scientific Corporation. The recipient by accepting these drawings and/or data, assumes custody thereof and under the above terms agrees not to allow the use of by unauthorized persons.



## **GATE INSTALLATION**

ATTACHING DOOR FRAME TO EXISTING FENCE  
ATTACHING DOOR ONTO HINGES

**COPYRIGHT 2020 DELTA SCIENTIFIC  
ALL RIGHTS RESERVED**



## **ANTI-CLIMB FENCE GATE**

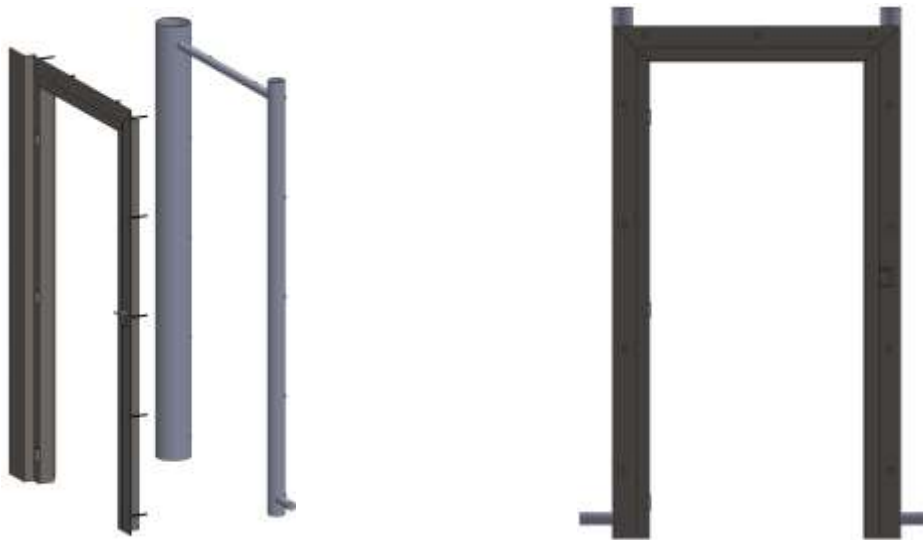
### **Safety Precautions**

At all times observe good safety practices when working on either the mechanical. Make sure that the power is disconnected before starting any work.

### **Installation**

#### **Gate Frame**

- A. Align the gate frame to the existing fence posts and clamp them in place.
- B. Using the holes in the gate frame, drill through the fence posts with a 7/16" drill bit.
- C. Bolt the frame to the fence posts with the supplied carriage bolts and remove the clamps.



#### **Gate Door**

With two people lift the door up and slide it onto the heavy duty hinge receivers on the frame.



### **Electronic Keypad Door Handle**

The electronic keypad is already installed on the door and should be ready to use or to program using the manual provided with product.

### **Padlock Latch**

The gate door has a mount that will line up with the bracket on the gate frame for padlocking the door. Padlock not included.

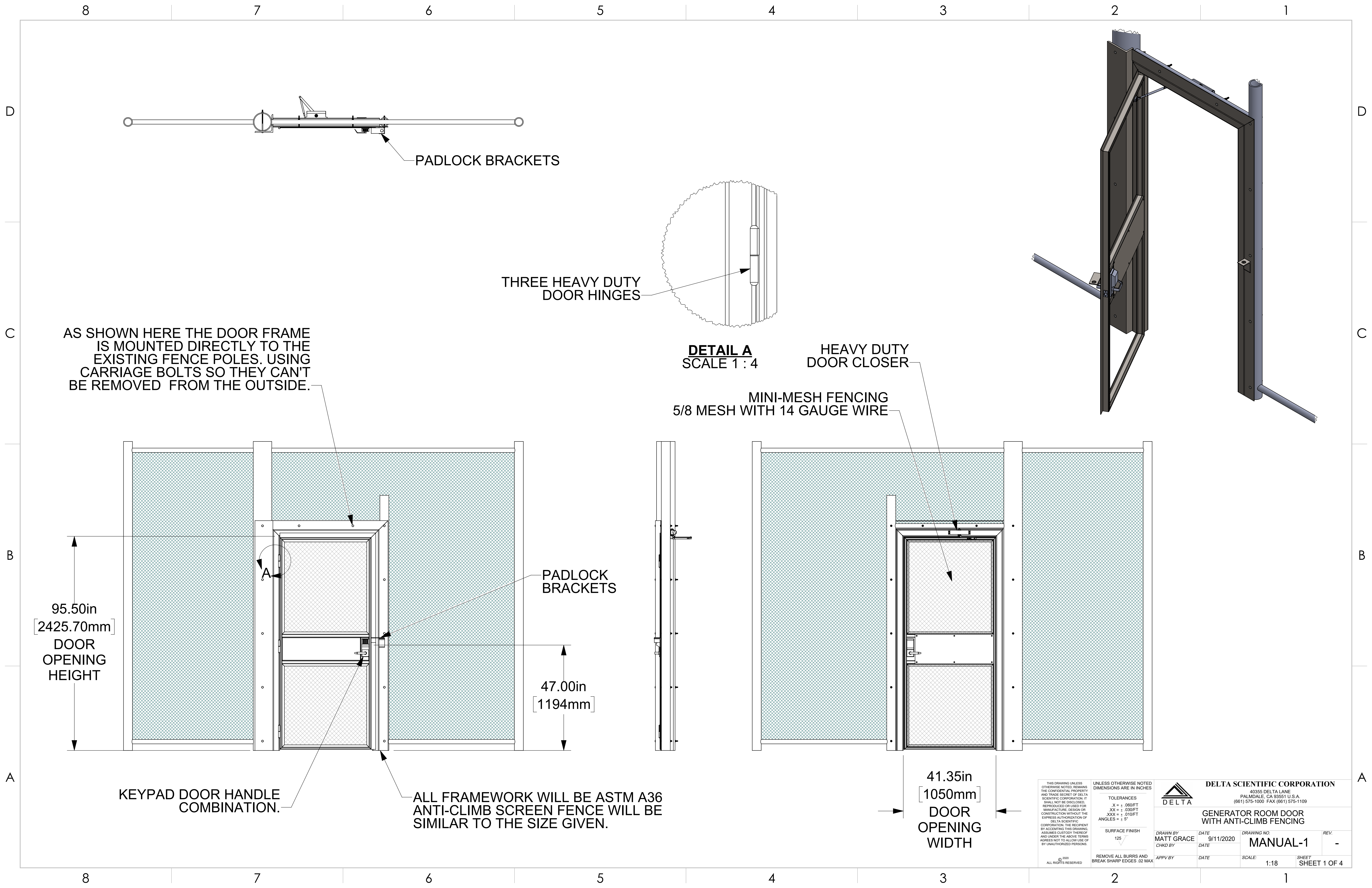


## **DRAWINGS**

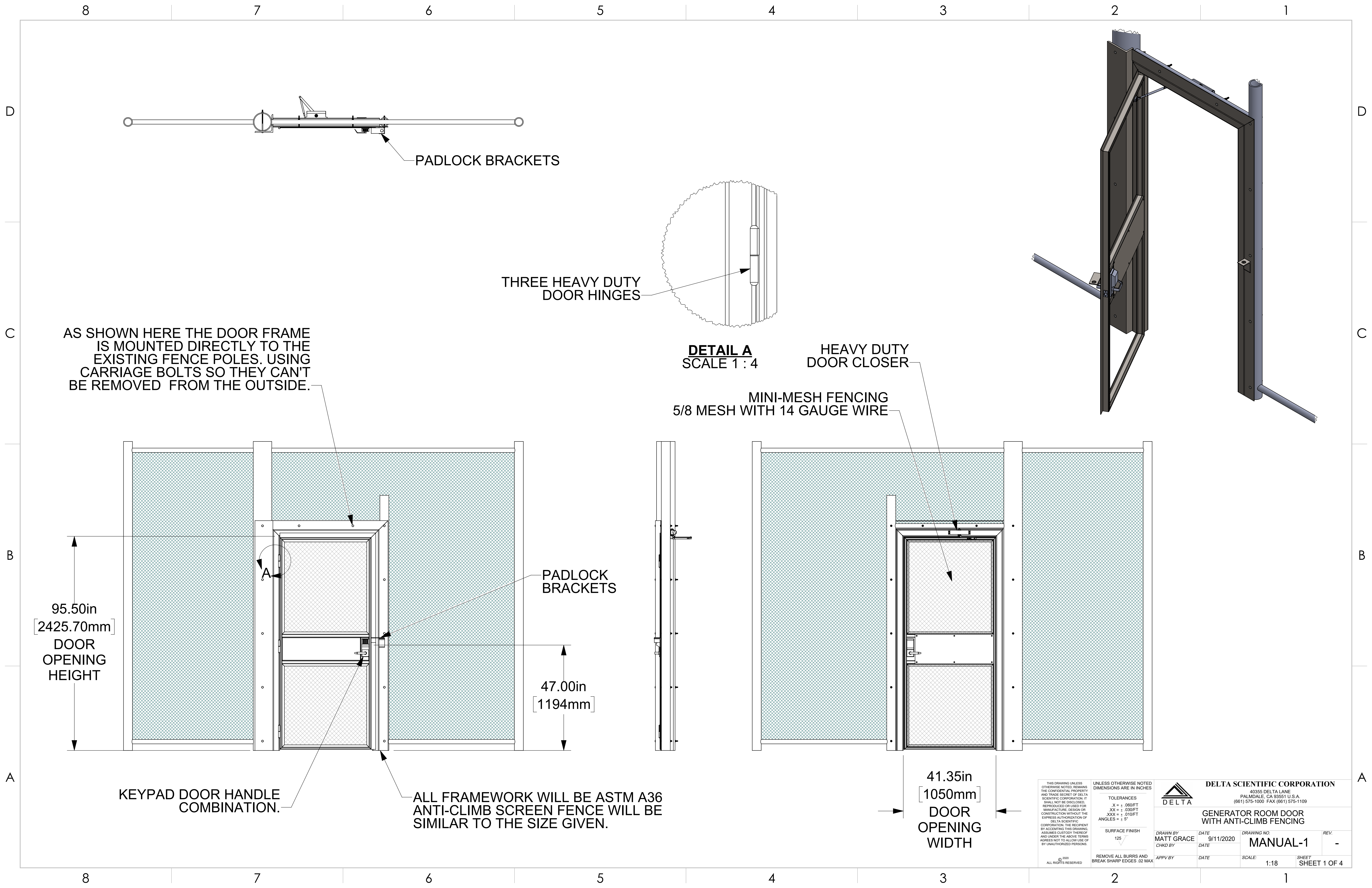
### GENERAL ARRANGEMENT

**COPYRIGHT 2020 DELTA SCIENTIFIC  
ALL RIGHTS RESERVED**











## **PRODUCT SPECIFICATIONS**

**COPYRIGHT 2020 DELTA SCIENTIFIC  
ALL RIGHTS RESERVED**



# Trilogy® T2: DL2700

**#1 most popular standalone pushbutton cylindrical lock**

Durable electronic digital locks available in indoor and outdoor models



- **Grade 1 Durability.** Dependable lockset with rugged clutch mechanism, plus **vandal-proof all metal keypad.**
- **Multi-level user codes:** Master, 10 managers, 90 users, 3 service codes
- **Up to 100 different user codes** (3-5 digits)
- **100% keypad programmable** with a fingertip
- **Individual, group or total user lockout codes**
- **Easy passage mode** by manager and/or master
- **Easy to install in about an hour,** retrofits cylindrical knobsets and digital locks using slightly modified ANSI 161 Series Prep
- **Standalone battery operated;** 5 AA batteries rated at 200,000 cycles
- **Non-handed** for easy installation and versatility
- **2-wire remote override**
- **Visual and audible entry indicators**
- **WP Models for weatherproof performance,** water-sealed for use inside and out, with operational temperature range of +151°F to -31°F (+66°C to -35°C)

*(Note: all Trilogy models are available in WP weatherproof and non-WP standard models for interior doors.)*



Ideal for schools, healthcare, pharmacies, offices, retail and airports.



**ALARM LOCK**

**OPERATION:** Clutch mechanism permits turning lever without retracting latch and reduces stress on lock bodies and spindle. Outside lever free turning in locked position. Entering access code, key bypass, or remote bypass will allow lever to retract latch. Inside lever always instant egress.

**DOOR THICKNESS:** 1 5/8" to 1 7/8." Other thicknesses. Please consult Alarm Lock.

**BACKSET:** 2 3/4" Standard. 2 3/8" backset also available.

**KEYPAD:** All metal, 12 button programmable for multi-level access functions including group or individual user codes, master and management codes, passage and emergency or service code, lockout and remote override capability and allowable entry time from 5 to 20 seconds. 4 Different keypad tones and keypad may be silenced.

**STANDARD KEY OVERRIDE CYLINDERS:** Solid brass 6 pin tumbler cylinder pinned 5, SC1 keyway, furnished in all locks. Additional tailpieces included: HW580 fits Schlage, Corbin/Russwin CL, Sargent 480 Series, ASSA65-611. Model HW620 fits Ilco and Lori cylinders.

**INTERCHANGEABLE CORE MODELS:** Accepts 6 & 7 Pin Cylinders from: Best, Arrow, KSP, Medeco Keymark & Kaba Peaks. Also available IC Core models for Yale, Medeco, Sargent, Corbin/Russwin CL and Schlage. Alarm Lock Tailpiece is supplied; IC Core is not included.

**LATCHBOLT:** UL Listed, fire rated, 3 hours, 1/2" throw, solid brass, deadlocking. Reversible. Adjustable front for flat or beveled doors.

**STRIKE:** 1 1/8" x 2 3/4" T strike & 1 1/4" x 4 7/8" ASA strike included. With screws for wood or metal jambs.

**LATCH FRONT:** 1 1/8" x 2 1/4" wrought brass or stainless steel.

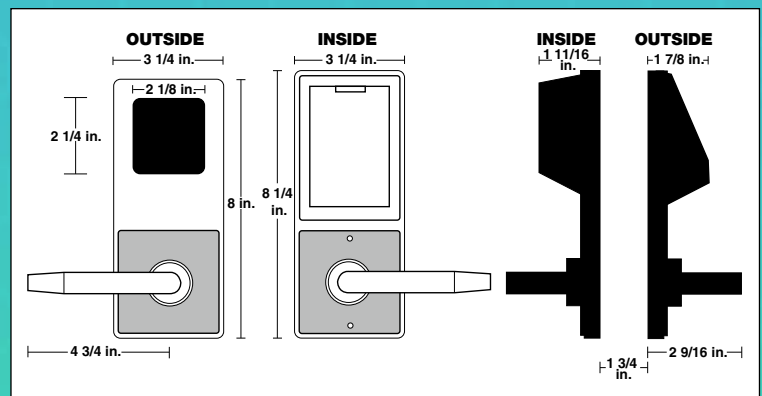
**HANDING:** Non-handed.

**FINISHES:** US3 polished brass, US26D satin chrome, 10B Duronodic.

**POWER:** 5 AA alkaline batteries are now rated at 200,000 cycles, supplied. Audible low battery alert, visual and audible entry indicators, unique Flex Drive® motor.

**DOOR PREP:** Standard ANSI 161 Series Prep, modified by adding additional through-bolt holes.

**COMPLIANCES:** Grade I, heavy duty cylindrical lockset, UL listed and FCC certified. ADA compliant leversets.



**DL 27 00 WP IC /26D -Y**

**Model & Series:**  
DL27 = Trilogy T2 Series

**Trim:**  
00 = Lever  
75 = Regal Trim Lever

**Exterior / Interior Use:**  
**WP** = Weatherproof for exterior use  
(Note: No "WP" indicates standard, interior use.)

**Cylinder:**  
IC = Standard Interchangeable Core  
Prep for Best, Falcon, Arrow, KSP  
(Note: No "IC" indicates standard K.O. cylinder.)

**Finish:**  
/3 = US3 Polished Brass  
/26D = US26D Satin Chrome  
/10B = Duronodic

**Special Order IC Prep:**  
-Y = Yale  
-M = Medeco  
-R = Sargent  
-C = Corbin/Russwin  
-S = Schlage

UL CE



Lever set in US3  
DL2700/3



With IC Core in 26D  
DL2700IC/26D



Secure battery  
compartment on  
inside door



DL2775/26D

**Trilogy is available in many additional models, including those for outdoors, and/or Mortise, plus with Prox ID card reader, dual-sided keypads, wireless lock networks and more.**

#### Some other Trilogy Options:

**DL2700LD:** With LocDown™ Indicator Light Bar & Keyfob

**DL2800:** Economical Audit Trail Security Lock provides keyless entry for up to 200 users

**DL1200/1300:** Models for Narrow Stile Glass Doors

**DL/PDL5300:** Dual-Sided PIN/Prox Lock with audit/trail

**DL3000, DL3200:** Advanced digital electronic door lock with audit trail

See Trilogy Networkx™ Locks for wireless network capabilities



**Alarm Lock Systems, LLC** (A Division of NAPCO Security Technologies, Inc.)

333 Bayview Ave, Amityville, New York 11701

1-800-ALA-LOCK • ++ 631.842.9400 • Fax 631-789-3383

www.alarmlock.com • salesinfo@alarmlock.com

Trilogy, Networkx and LocDown are trademarks of NAPCO Security Technologies. Other trademarks listed are those of their respective companies.

Preliminary specifications subject to change without prior notice. © 2016.3 ALA129





# 850 SERIES

STANDARD

# 880 SERIES

ADJUSTABLE BACK-CHECK



## FINISHES

- AL - Aluminum
- DU - Storefront Bronze

## 5 YEAR WARRANTY



[View 3D Model Online](#)

## FEATURES

- Series 880 has adjustable Back-Check function controlled by a separate regulating valve, adjustable after installation.
- Underwriters' Laboratories Inc. Listed.
- Range of sizes:
  - **Standard:** 851, 852, 853, 854 and **855**
  - **Back-Check:** 883, 884 and 885
- Two Adjustment Valves: Closing and Latching speeds controlled by separate regulating valves, adjustable after installation.
- Universal application. Non-handed for standard, top jamb or parallel arm installation.
- Available with regular, hold-open or fusible link hold open arms.
- Regular arms are equipped with a 15% (+)(-) 7½% power adjustment bracket.
- Hold-open arms are adjustable for holding from 90° to 180°.
- Rack and pinion mechanism contained in a high tensile precision cast aluminum housing assures the highest quality.
- Stable hydraulic door check fluid for any climatic operation and constant lubrication.
- Narrow design permits installation on most modern glass and aluminum doors without adaptors.



• 850 & 880 Series Closing and Latching Adjustment Valves

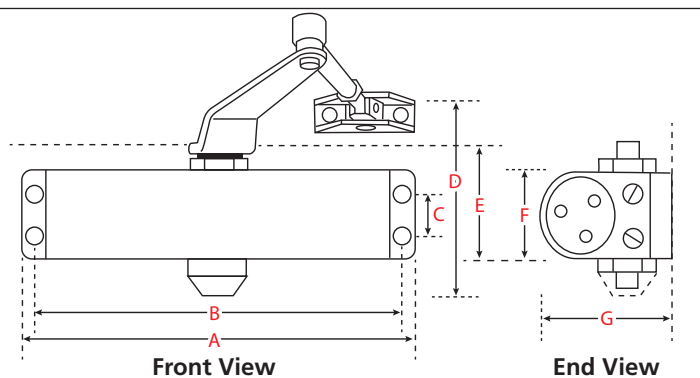


• 880 Series Back-Check Adjustment Valve

## TECHNICAL DIMENSIONS

Size 1 Meets ADA Requirements

Description	Dimensions			
	1	2	3	4 & 5
A. Length of Closer Body	7 1/8"	8 1/16"	8 7/8"	9 3/4"
B. Horizontal Mounting Holes	6 1/2"	7 3/8"	8 3/16"	9 1/16"
C. Vertical Mounting Holes	3/4"	3/4"	3/4"	3/4"
D. Overall Height	4 1/16"	4 3/4"	4 3/4"	4 3/4"
E. Top of Door to Bottom of Closer	1 15/16"	2 1/4"	2 1/4"	2 1/4"
F. Closer Body Height	1 5/8"	1 3/4"	1 3/4"	1 3/4"
G. Projection from Door	2 9/16"	3"	3"	3"



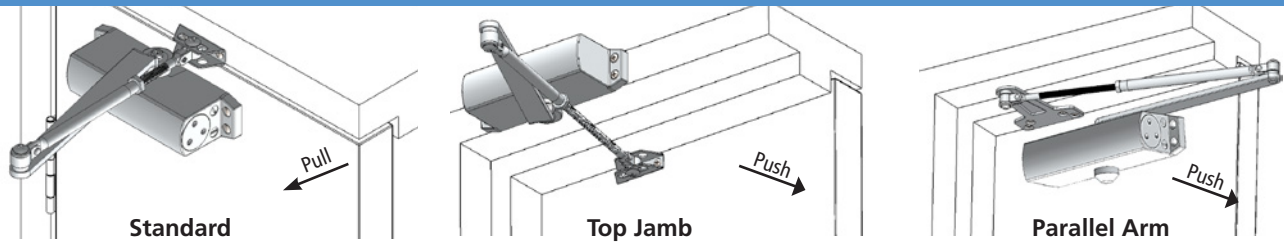
**International Door Closers, Inc.**

COPYRIGHT 2017 INTERNATIONAL DOOR CLOSERS, INC

**West: 800-544-4422 • East: 800-225-6737**

**www.intldoorclosers.com**







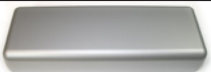

## INSTALLATION TYPES



## SELECTION CHART

INTERIOR DOOR SIZE	EXTERIOR DOOR SIZE		MODEL NUMBER		TYPE
	Swing Out	Swing In	Standard	Back-Check	
32"	28"	24"	851	—	Regular Arm Parallel Arm
28"	24"	—	851-P	—	
36"	32"	28"	852	—	Regular Arm Parallel Arm Hold-Open Arm Parallel Hold-Open Arm
32"	28"	24"	852-P	—	
36"	32"	28"	1852	—	
32"	28"	24"	1852-P	—	
42"	36"	32"	853	883	Regular Arm Parallel Arm Hold-Open Arm Parallel Hold-Open Arm
36"	32"	28"	853-P	883-P	
42"	36"	32"	1853	1883	
36"	32"	28"	1853-P	1883-P	
48"	42"	36"	854	884	Regular Arm Parallel Arm Hold-Open Arm Parallel Hold-Open Arm
42"	36"	32"	854-P	884-P	
48"	42"	36"	1854	1884	
42"	36"	32"	1854-P	1884-P	
54"	48"	42"	855	885	Regular Arm Parallel Arm Hold-Open Arm Parallel Hold-Open Arm
48"	42"	36"	855-P	885-P	
54"	48"	42"	1855	1885	
48"	42"	36"	1855-P	1885-P	

## PARTS AND ACCESSORIES - SERIES 850 & 880

Parts	Description	Size	1	2	3	4 & 5	<b>NOTE:</b> Doors of unusual height or weight, or doors subject to severe wind or draft conditions, or abusive usage, require the next larger model closer than the schedule.  <b>SPECIFY:</b> Closer Model or Part Number  <b>SPECIFY FINISH:</b> AL - Aluminum DU - Storefront Bronze
	Main Arm	Part #	510	520	520	520	
	Regular Forearm	Part #	511	521	521	521	
	Hold-Open Forearm	Part #	None	522	522	522	
	Parallel Bracket for Regular Arm	Part #	515	525	525	525	
	Flat Drop Bracket	Part #	None	527	537	547	
	Top Jamb Bracket	Part #	None	None	TJB-53	TJB-54	
	Dress Cover	Part #	None	None	DC-8000	DC-8000	
	Thru Bolt & Grommet Nut (Set of 4 each)	Part #	TBGN-50	TBGN-50	TBGN-50	TBGN-50	

International Door Closers, Inc.

COPYRIGHT 2017 INTERNATIONAL DOOR CLOSERS, INC

West: 800-544-4422 • East: 800-225-6737

[www.intldoorclosers.com](http://www.intldoorclosers.com)