

Protect Your Facility *and its Aesthetics!*



Architecturally-enhanced High-security **Bollard Systems**

Create the look you want...faceted, fluted, tapered, rings and ripples, colors, pillars, shields, emblems, logos...you decide.

Raise and lower in seconds!



Raise and lower in seconds... Bollards can be beautiful.



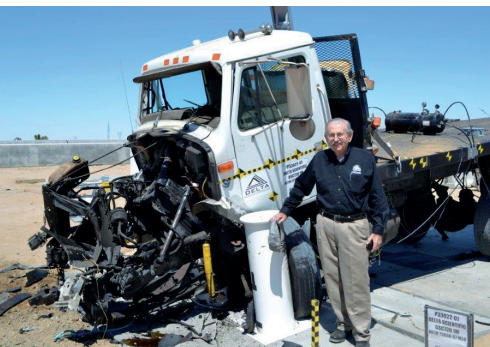
With Delta's revolutionary designer bollards, your first level of security will accent and enhance your architecture. Virtually unlimited in styles and aesthetics, your bollards will blend with the rest of your buildings.

You can specify having ornamental steel trim attached directly to the bollard or select cast sleeves of aluminum, iron or bronze, which slip right over the crash tube. Bollards can be galvanized for corrosion resistance, fitted with an internal warning light for increased visibility and engineered to suit high traffic volumes. If damaged, you simply slip off the old sleeve and slip on the new.

You'll see Delta designer bollards in front of the U.S. Department of State headquarters in Washington, D.C. Within days of introduction, they were selected for facilities in Paris and Berlin. By matching existing styles, local authorities were able to approve long-delayed projects.



U.S. Department of State



Delta bollards are tough!

Select the level of security that is required for your application. The four levels of Delta designer bollards each meet or exceed

Only a -0.50 m penetration! In its crash test, the new Delta DSC720-1M bollard completely disabled a 15,000 pound (6,800 kg) test vehicle travelling at 50 mph (80 km/h), causing severe damage to the engine and drive train yet yielding a maximum penetration of only -0.50 m, an impact rating of P1!

U.S. Department of Defense and Department of State certifications. This gives you the assurance that the bollards you are employing for physical vehicle security have been tested to the highest standards for repelling terrorist attacks.

Such strength is important whether you're planning to secure a military base, warehouse or parked freight trailer. Now, with their good looks, the bollards you've always wanted to use out back can also be brought out front to hold a parking spot for visiting dignitaries or protect the front lobby.

Indeed, our bollards have been tested by independent laboratories and have met the standards of the highest level of anti-terrorist barricades. They hold the highest ratings ever given to bollard systems.

NEW TALLER BOLLARDS

Taller trucks, especially those found in Europe and the Mideast, will not be able to tumble over these anti-terrorist, crash-proof bollards. In a full scale crash test, the new Delta Scientific DSC720-1M bollards, which raise & lower in seconds, passed an independent lab test following ASTM criteria for an M50 level test.

DELTA SERIES	CERTIFIED BY	CERTIF. LEVEL	TEST CRITERIA	CRASH SPEED
DSC 720-1M	U.S. Dept. of State/ U.S. Dept. of Defense	ASTM M50/P1	15,000 lbs. (GVW)	50 mph
DSC 720	U.S. Dept. of State/ U.S. Dept. of Defense	K12, L2	15,000 lbs. (GVW)	50 mph
DSC 701	U.S. Dept. of State/ U.S. Dept. of Defense	K8, L2	15,000 lbs. (GVW)	40 mph
DSC 800	U.S. Dept. of State/ U.S. Dept. of Defense	K4, L2	15,000 lbs. (GVW)	30 mph

Why are Delta bollards the de facto solution?

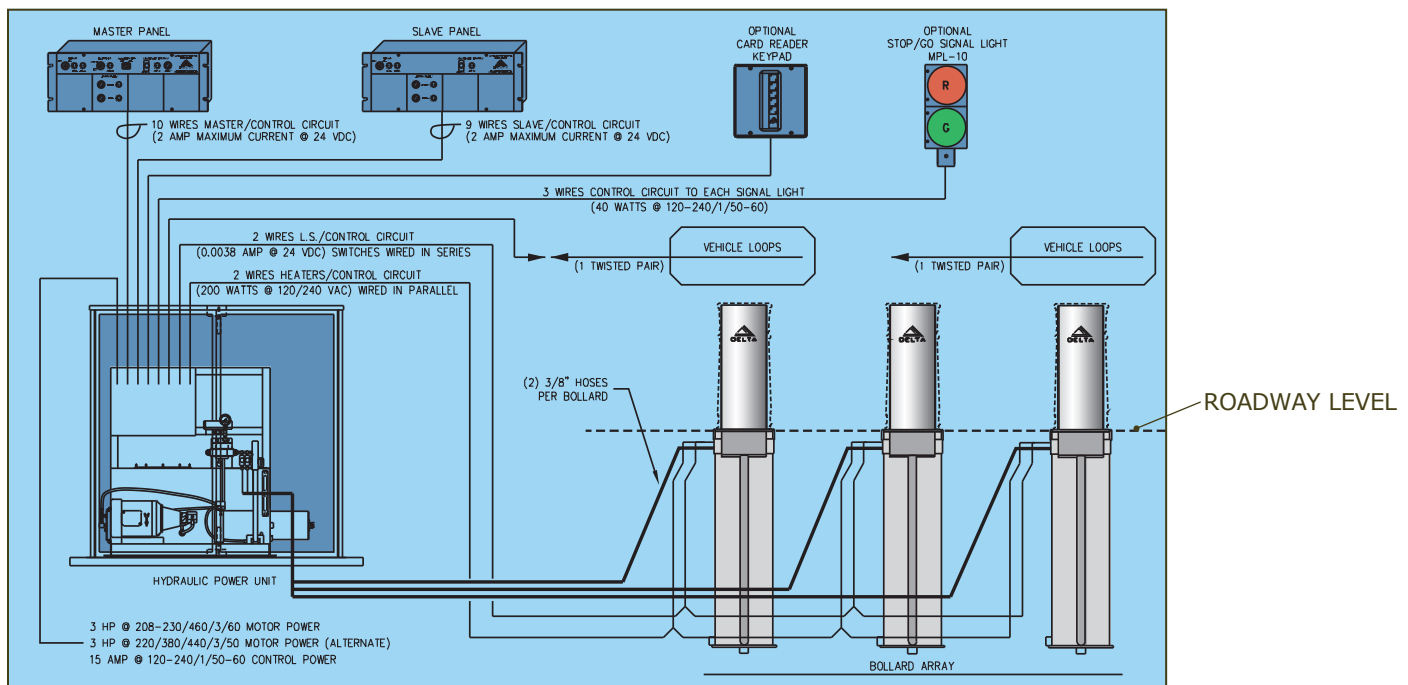
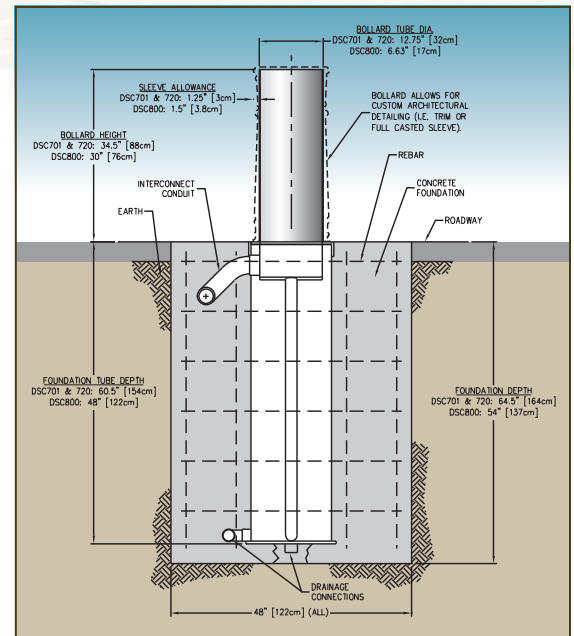
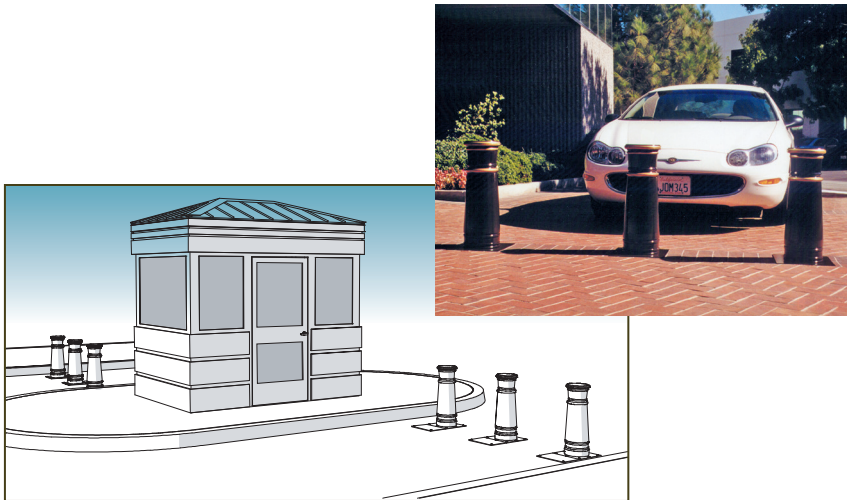
It's a fact that over 16,000 systems world-wide are protected by Delta systems. These include U.S. embassies, nuclear plants, banks, manufacturing facilities, military bases, courthouses, private companies, major airports, car and rental lots, logistics centers, palaces, private residences and many more. For over many years, Delta systems have been protecting some of the most important people and facilities in the world.

Since 1974, Delta has been producing products and systems that promote safety and security

Quality!

for people and property. Our staff is knowledgeable and experienced.

Delta has been the leader in using Finite Element Analysis to study vehicle collisions with fixed and moveable barriers. With our database of full-scale test results, we have superb computer models that enable us to test new designs at our desktops. We're able to analyze unique situations and design products that will meet your special needs.





To obtain DOS and DOD certification, Delta bollards were tested to rigorous standards by an independent test laboratory. Full-scale crash tests, using heavily-loaded trucks, were conducted.

Not only did the bollards stop and destroy the test trucks. In each case, two of the three bollards in each tested system were fully functional—still effective barricades after massive collisions!



Most models are available in four types of operation: Hydraulic, Pneumatic, Electro-Mechanical and Manual. Delta Hydraulic systems are the most advanced and reliable in the industry. There are more Delta Hydraulic barriers in the world than any other system. Our Pneumatic systems are built with the same reliable and low maintenance technology as our hydraulic units, on a more earth-friendly platform. With more force, less amperage and lower maintenance cost than electro-mechanical, and no messy hydraulic oil, Pneumatic is tough to beat.

Through rigorous testing and development, Delta has assembled one of the most advanced Electro-Mechanical systems on the market. Simple, effective and efficient, our electric systems are built to the same high quality Delta customers have come to expect. If none of these options accommodate your site, we offer our ever faithful Manual system. They are suited for areas with no available power or low frequency of use. Requiring only 40 lbs. of force to operate, counter-balanced Manual versions are a good fit for any location.



Delta Scientific Corporation is the leading worldwide manufacturer of vehicle access control equipment with over 260,000 square feet of production facilities in Palmdale, CA. Delta's three product lines consist of high-security vehicle barricade systems, parking control equipment and guard booths.

Contact us today.

PRINCIPLE OFFICES

Corporate Headquarters & Manufacturing Center

40355 Delta Lane
Palmdale, CA 93551
Phone: (661) 575-1100
Fax: (661) 575-1109
info@DeltaScientific.com

Product Support

125 Wyatt Lane
Fredericksburg, VA, 22406
Phone: (540) 310-4050
Fax: (540) 310-4157
info@DeltaScientific.com

Complete design, installation & consulting services are available worldwide.

www.deltascientific.com ▲ Phone 1-661-575-1100

GSA Contract Number GS-07F-9982H

