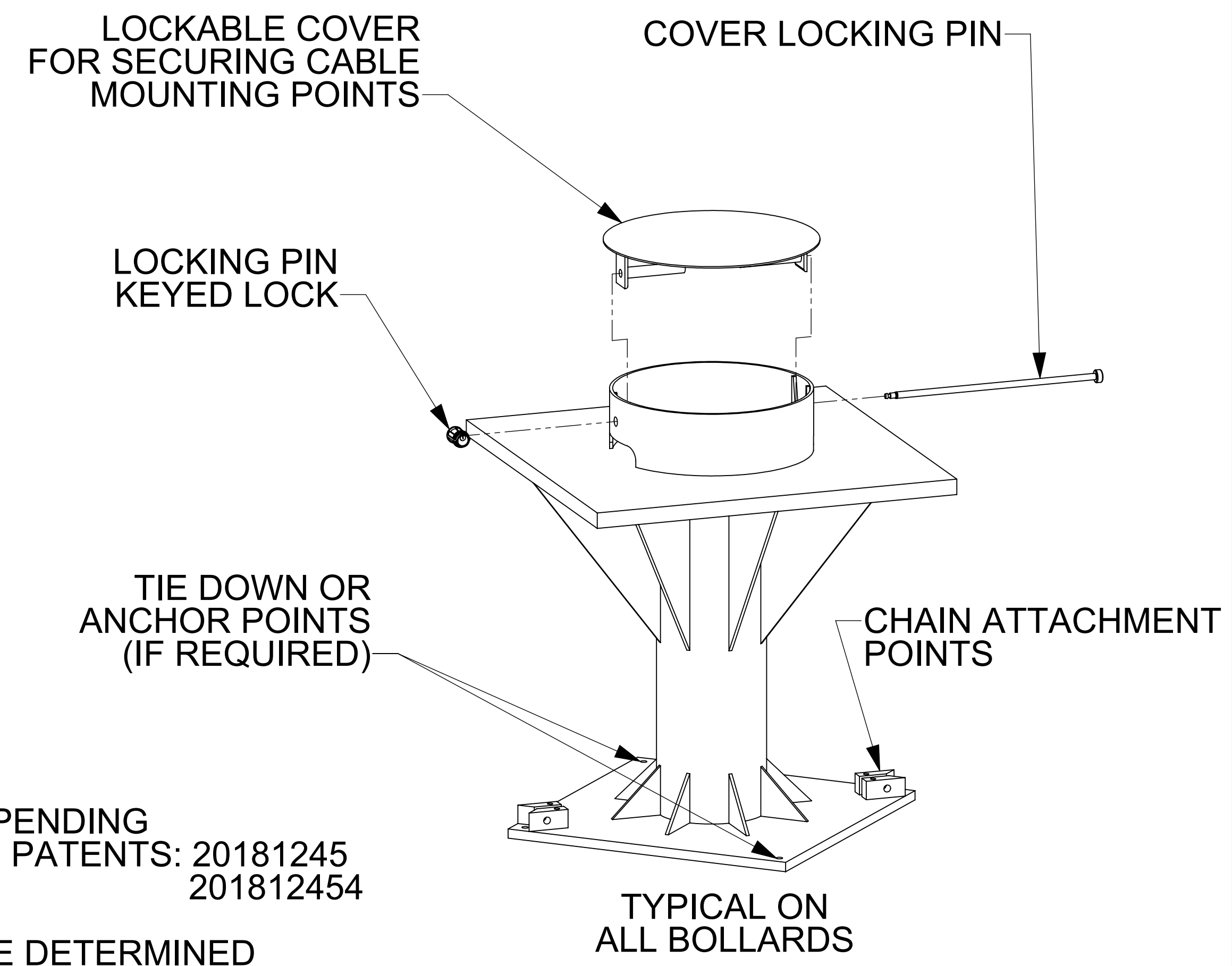
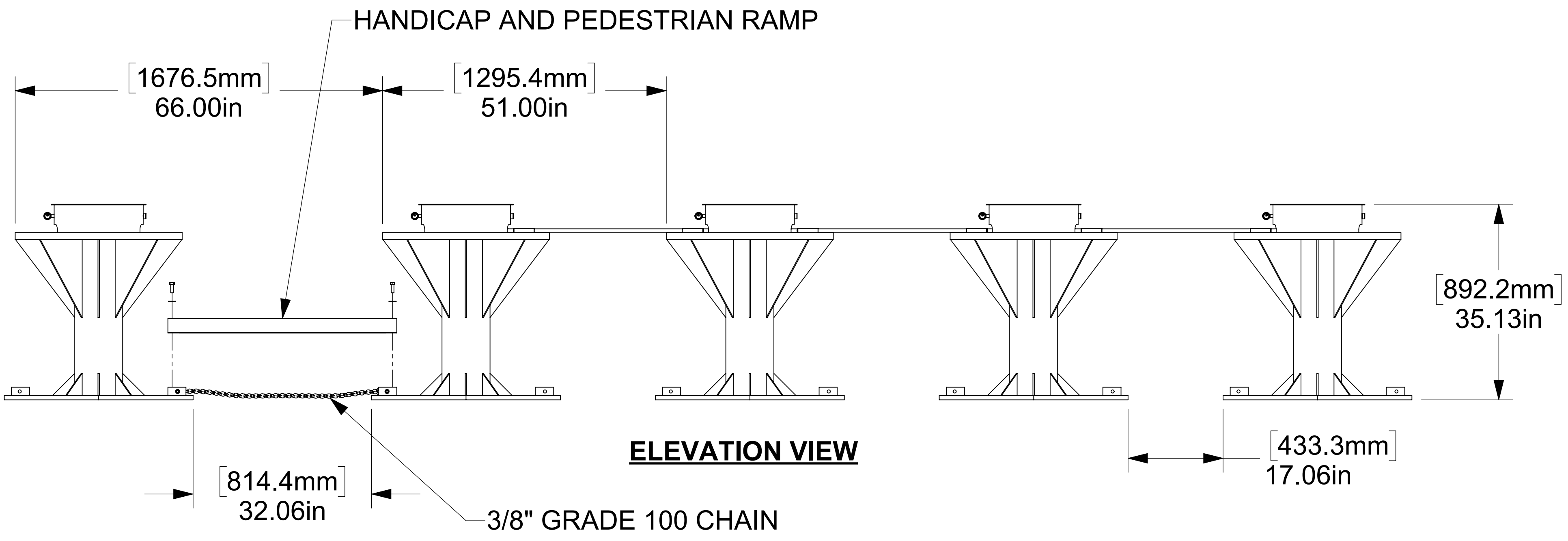
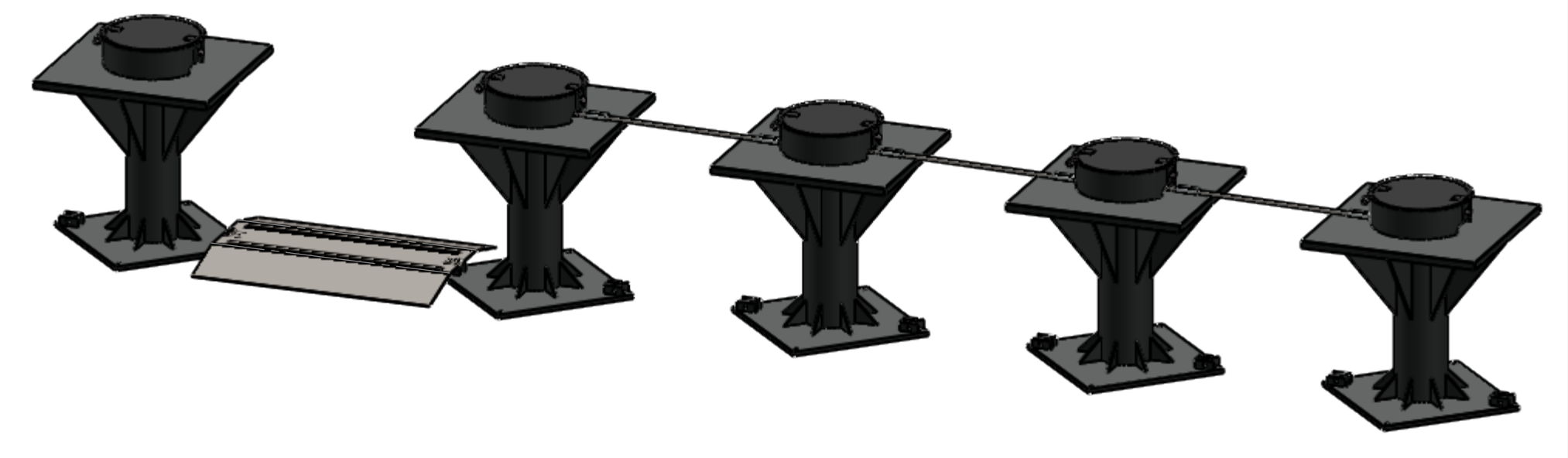
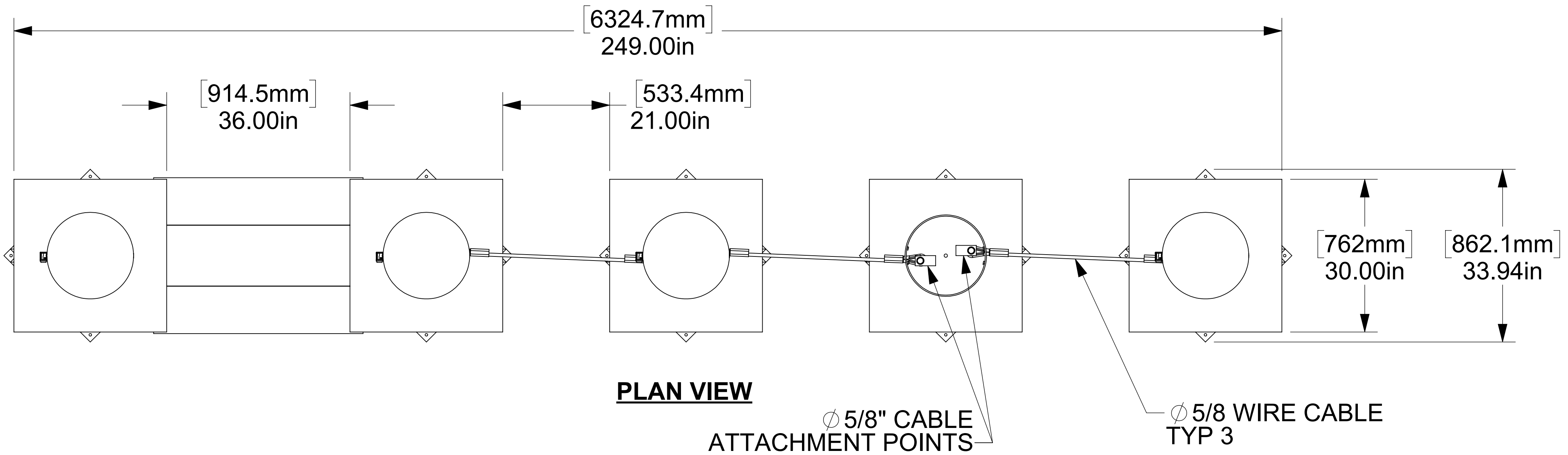


ITEM	QTY	DESCRIPTION	WT EA	REF #
1	5	BOLLARD AND TOP COVER ASSEMBLY	695.65	15281
2	1	3/8" CHAIN, GRADE 100 DETAIL	3.48	15282-04
3	1	HANDICAP RAMP	57.92	15279
4	3	5/8" WIRE CABLE SLING	5.53	15159-08



- NOTES:
- TB 100 SERIES PATENTS PENDING
AUSTRALIAN DESIGN PATENTS: 20181245
201812454
 - COLOR AND FINISH: TO BE DETERMINED
 - STRIPE OPTIONS:
 - WHITE WITH YELLOW OR BLACK STRIPES
 - YELLOW WITH BLACK STRIPES
 - WHITE WITH RED STRIPES

THE SYSTEM HAS A HANDICAP/PEDESTRIAN RAMP TO ALLOW ENTRY WHEN THERE IS NO AVAILABLE SPACE ON EITHER SIDE.

THIS BOLLARD ARRAY CAN BE SITED ON EXISTING CONCRETE OR ASPHALT ROADWAYS OR SIDEWALKS. NO EXCAVATION OR SUB-SURFACE PREPARATION IS REQUIRED.

THIS DRAWING UNLESS OTHERWISE NOTED, REMAINS THE CONFIDENTIAL PROPERTY AND TRADE SECRET OF DELTA SCIENTIFIC CORPORATION. IT SHALL NOT BE REPRODUCED, REPRODUCED OR USED FOR MANUFACTURE, DESIGN OR CONSTRUCTION WITHOUT THE EXPRESS AUTHORIZATION OF DELTA SCIENTIFIC CORPORATION. THE RECIPIENT BY ACCEPTING THIS DRAWING ASSUMES CUSTODY THEREOF AND UNDER THE ABOVE TERMS AGREES NOT TO ALLOW USE OF BY UNAUTHORIZED PERSONS.

UNLESS OTHERWISE NOTED DIMENSIONS ARE IN INCHES

TOLERANCES
X = ± .060/FT
XX = ± .030/FT
XXX = ± .010/FT
ANGLES = ± 5°

SURFACE FINISH
125 ✓

REMOVE ALL BURRS AND BREAK SHARP EDGES .02 MAX

© 2017 ALL RIGHTS RESERVED

DELTA SCIENTIFIC CORPORATION
40355 DELTA LANE
PALMDALE, CA 93551 U.S.A.
(861) 575-1000 FAX (861) 575-1109

**TB 100 SERIES (TB 125) 5 BOLLARD ARRAY
GENERAL ARRANGEMENT**

DRAWN BY: MCG DATE: 3/5/2018
CHKD BY: DATE: REV: -
APPV BY: DATE: SCALE: 1:14 SHEET: SHEET 1 OF 1

DRAWING NO.: 90485-125