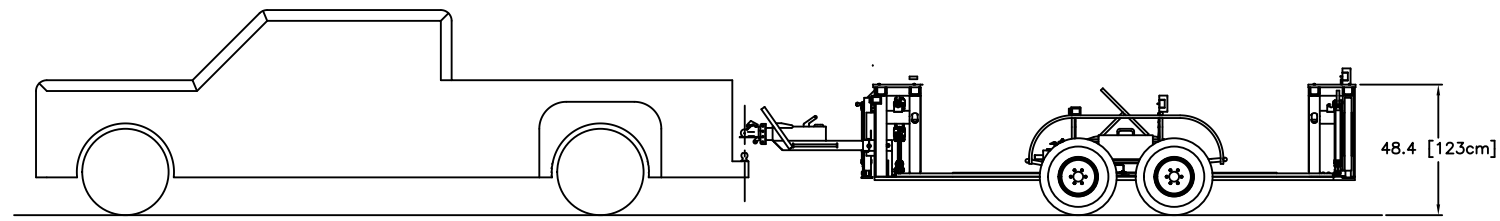
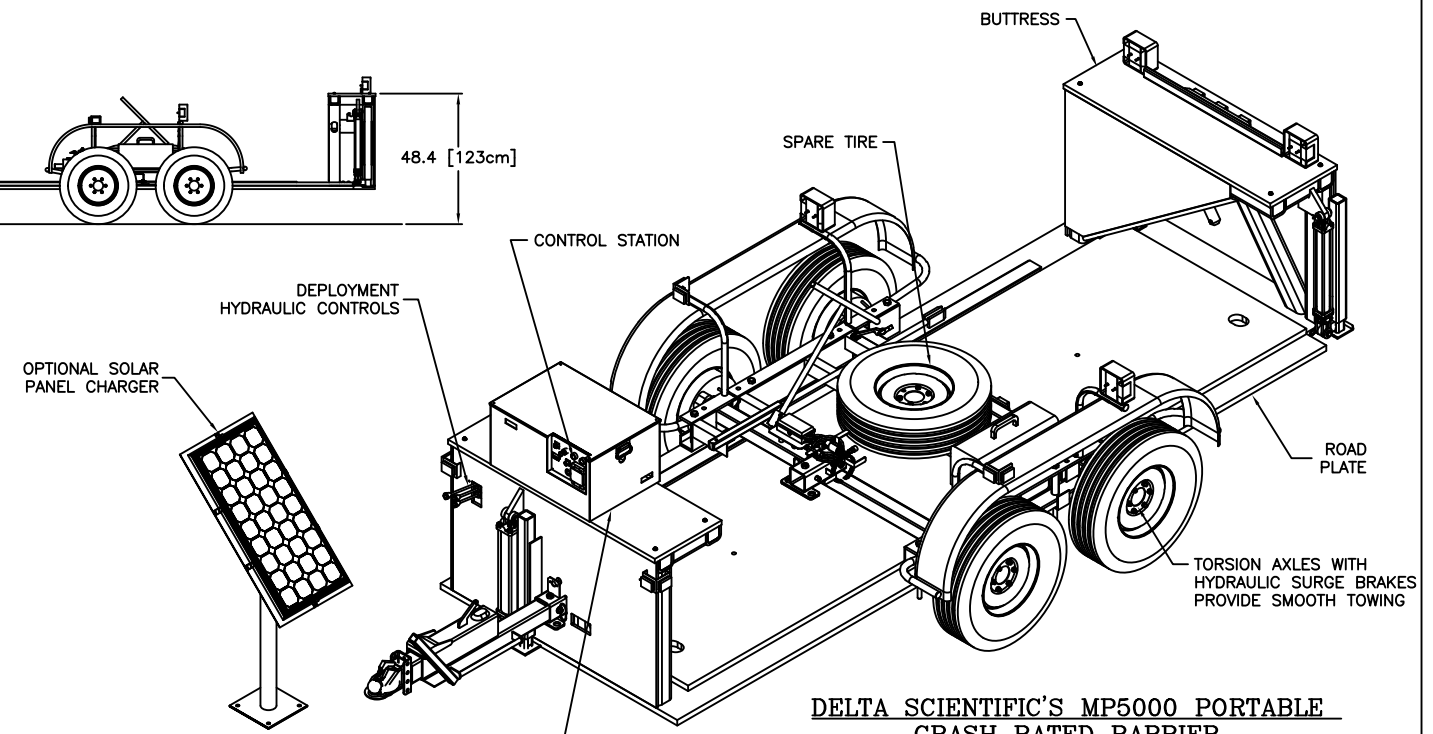


| OPTIONS                                | PART NO.     |
|--|--------------|
| HITCH BALL, 2-5/16"                    | 2461-130     |
| LUNETTE EYE, 3" (EU COMPLIANT)         | 2461-129     |
| SOLAR PANEL ASSEMBLY                   | 90593        |
| CABLE KIT, 120 VOLTS, 60 Hz            | 9149-120     |
| CABLE KIT, 220 VOLTS, 50 Hz            | 9149-220     |
| TURN TABLE, BARRIER                    | 9251         |
| REMOTE PUSH BUTTON STATION             | MPL-4050-20' |
| TRAFFIC SIGNAL, DOWN L/S, MTC-26 (24") | B2050        |
| FULLY DOWN LIMIT SWITCH (9056-3)       | B2010        |
| POST, SIGNAL LIGHT, 48" HIGH           | MPL-20       |



TOW EXAMPLE



**DELTA SCIENTIFIC'S MP5000 PORTABLE CRASH RATED BARRIER**

THE SYSTEM HAS BEEN TESTED IN FULL SCALE CONFIGURATION AT AN INDEPENDENT TESTING LABORATORY AND HAS BEEN CERTIFIED TO HAVE MET THE U.S. DEPARTMENT OF STATE TESTING DOCUMENT SD-STD-02.01 DATED APRIL 1985 WITH RATINGS OF K4-L1 (FULL SCALE CRASH TEST FOR CERTIFICATION SUCCESSFULLY CONDUCTED BY KARCO ENGINEERING, ADELANTO, CA ON MAY 29, 2003). IT IS CONFIGURED FOR EXPEDITED DEPLOYMENT AND, AS NEEDED, RETRIEVAL AND RELOCATION.

THIS BARRIAGE SYSTEM CAN BE SITED ON EXISTING CONCRETE OR ASPHALT ROADWAYS OR VERGES; LEVEL COMPACTED SOILS OR SOME COMBINATION OF THESE. NO EXCAVATION OR SUB-SURFACE PREPARATION IS REQUIRED.

THE MP5000 IS A PHALANX TYPE BARRIER RAMP TOTALLY SELF CONTAINED WITH FREE PASSAGE BETWEEN BUTTRESSES OF 12 FT. (144IN.). LOW PROFILE FREE TRAFFIC FLOW BARRICADE RAMP. SELF CONTAINED DEPLOYABLE RAMPS WITH MAXIMUM ROAD CLEARANCE.

THE BARRICADE IS DEPLOYED AFTER BEING TOWED TO THE SITE AND THEN LOWERED INTO POSITION BY MEANS OF HYDRAULIC JACKS. IT IS RETRIEVED BY LIFTING THE BARRIER TO THE "TOW" POSITION USING THE SAME HYDRAULIC JACKS. NO HAND CRANKING REQUIRED. ONCE SITED THE WHEELS ARE STORED AND THEN VEHICLE RAMPS ARE FOLDED OUT, COMPLETING THE DEPLOYMENT. ESTIMATED DEPLOYMENT TIME - LESS THAN 15 MINUTES.

BOTH THE OPERATION OF THE BARRIER AS WELL THE INITIAL DEPLOYMENT (AND RETRIEVAL) IS PUSH BUTTON CONTROLLED. THE STANDARD SYSTEM HAS A BATTERY OPERATED HYDRAULIC POWER UNIT, REPLENISHED FROM EITHER A SOLAR ARRAY OR FROM LOCAL LOW VOLTAGE SOURCES.

OPTIONALLY A DELTA HYDRAULIC POWER UNIT OPERATED ON LOCALLY SUPPLIED POWER OR A FULL MANUAL SYSTEM, OR COMBINATION THEREOF IS AVAILABLE. BOTH THE LOCALLY POWERED AND THE BATTERY POWERED HYDRAULIC PUMPING UNIT CAN BE SIZED TO PROVIDE PASS-THROUGH RATES SUITABLE FOR MOST INSPECTION AND IDENTIFICATION STATION REQUIREMENTS.

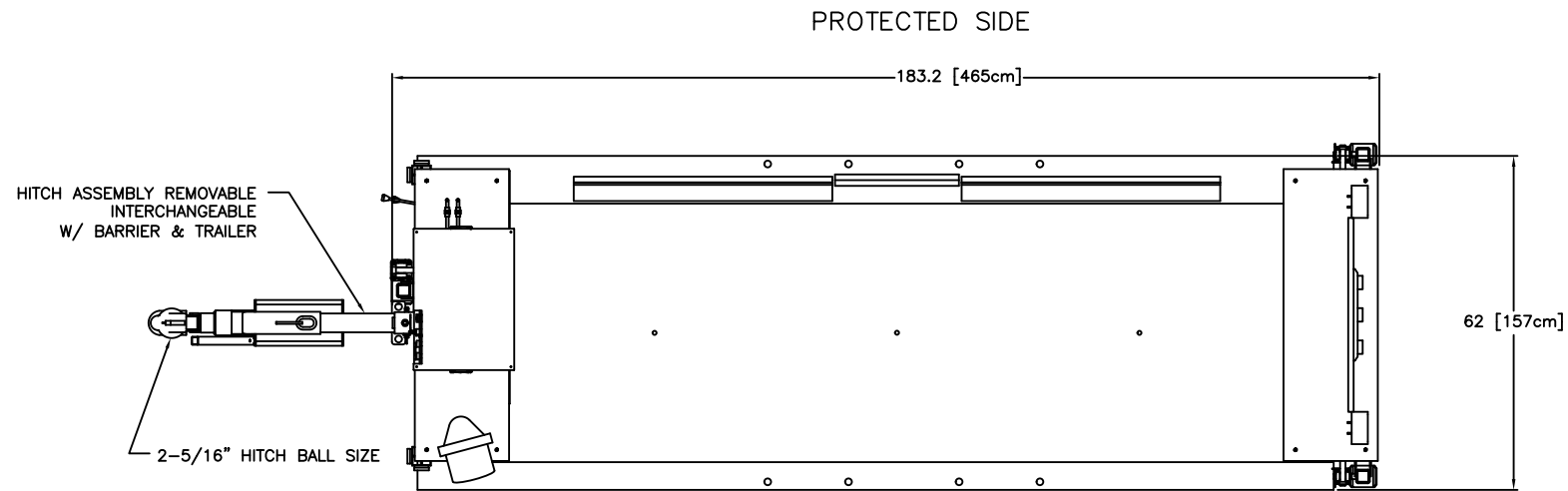
AVAILABLE OPERATING MODES INCLUDE, FULL AUTOMATIC, REMOTE- HARD LINE, REMOTE-RADIO, CARD READER, AND KEY SWITCH AND BY LOCAL GUARD PUSH BUTTON STATION, MASTER(S) AND SLAVE(S) CONTROL PANELS...ETC. - OR BY COMBINATIONS THEREOF.



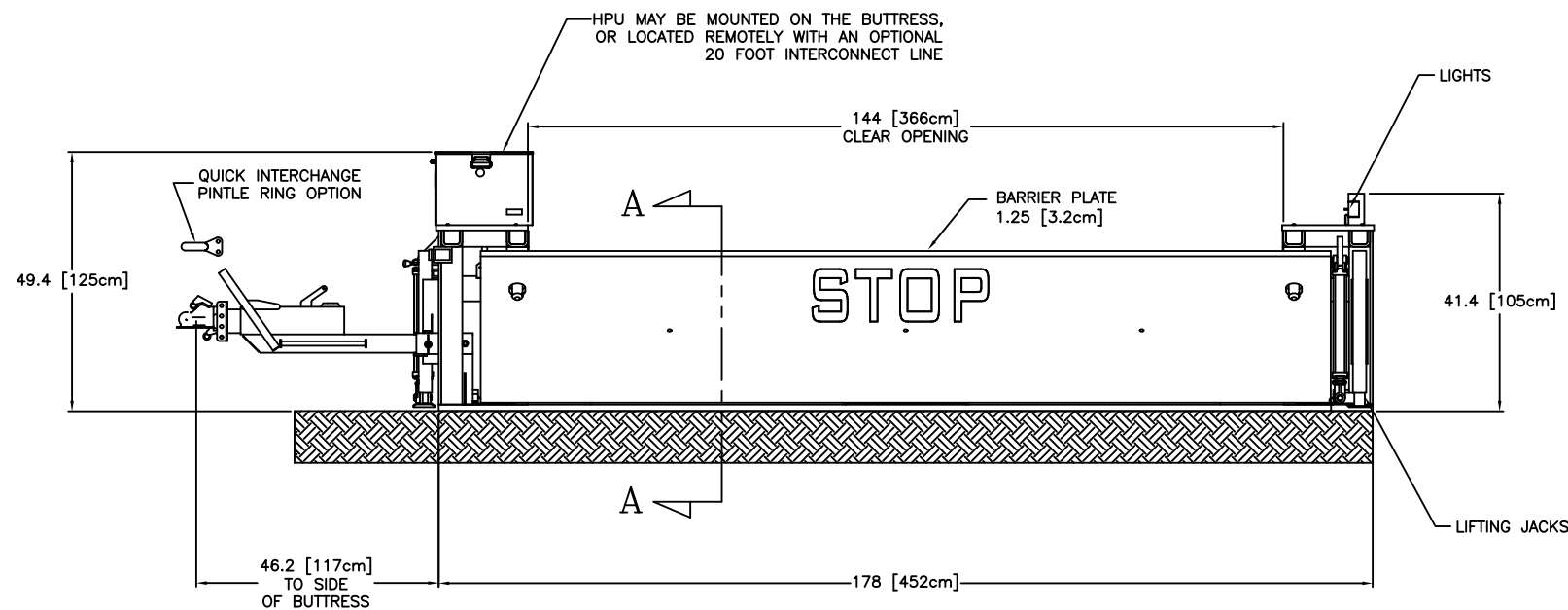
PHALANX™

| REV. | DESCRIPTION  | DRWN BY | DATE     | APPVD BY | DATE          |
|------|--------------|---------|----------|----------|---------------|
| D    | ECO 2013-055 |         | 11/14/13 | T.D.P.   |               |
| C    | ECO 2011-129 |         | 01/03/12 | M.C.     | J.M. 01/24/12 |
| B    | ECO 2011-083 |         | 6/13/11  | M.C.     |               |
| A    | ECO 2011-069 |         | 5/13/11  | M.C.     |               |

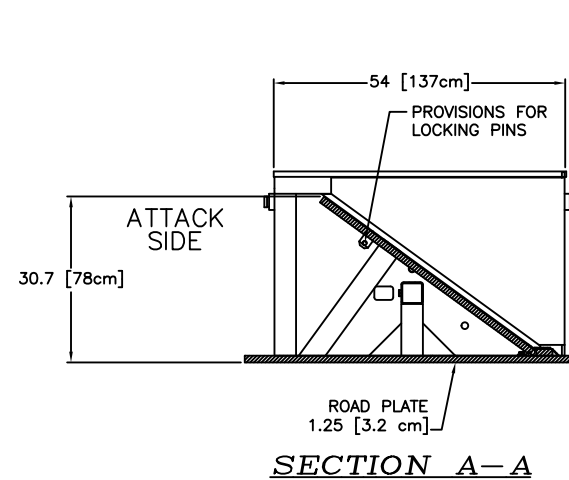
|   |        |  |              |
|---|--------|--|--------------|
| <p>UNLESS OTHERWISE NOTED DIMENSIONS ARE IN INCHES</p> <p>DELTA SCIENTIFIC CORPORATION<br/>40355 DELTA LANE<br/>PALMDALE, CA 93551 U.S.A.<br/>(661) 575-1100 FAX (661) 575-1109</p> |        | <p>DELTA SCIENTIFIC CORPORATION<br/>40355 DELTA LANE<br/>PALMDALE, CA 93551 U.S.A.<br/>(661) 575-1100 FAX (661) 575-1109</p> |              |
| <p>MP5K STANDARD (12') PORTABLE ROADWAY BARRIER GENERAL ARRANGEMENT</p>   |        | <p>DRAWING NO. 90123</p>   |              |
| DRWN BY   | DATE   | DATE   | REV.         |
| J. MANOR  | 5/3/11 |  | D            |
| CHKD BY   | DATE   | DATE   |              |
| APPVD BY  | DATE   | SCALE: 1:18 (D SIZE)   | SHEET 1 OF 2 |



ATTACK SIDE PLAN VIEW



ELEVATION



SECTION A-A

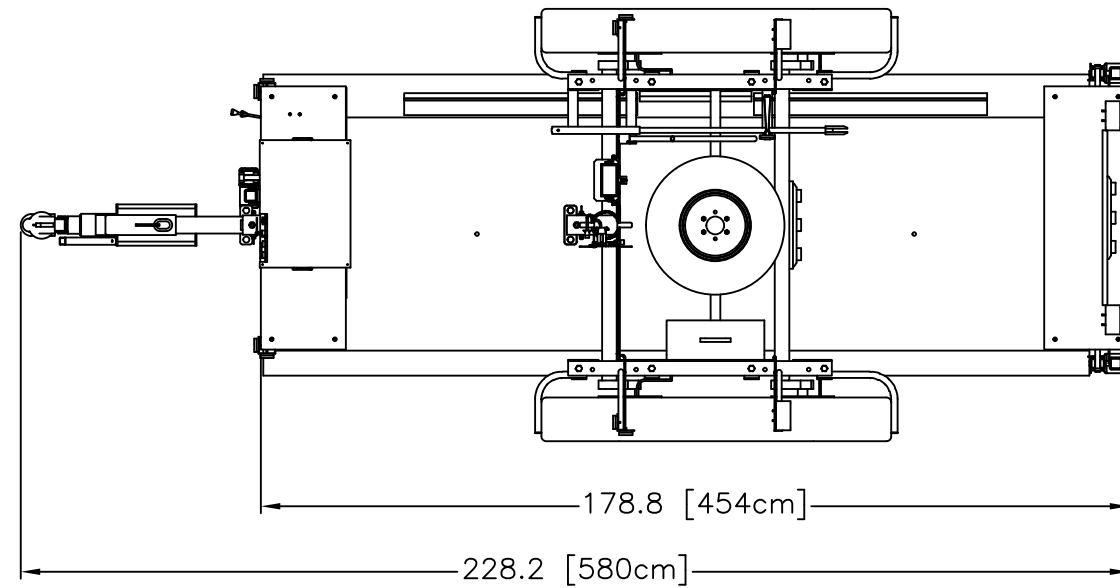
| DESCRIPTION               | WEIGHTS    |          |
|---------------------------|------------|----------|
| BARRIER ONLY              | 9,347 lbs  | 4,240 kg |
| TRAILER ONLY              | 1,159 lbs  | 526 kg   |
| BARRIER W/TRAILER         | 10,506 lbs | 4,765 kg |
| TONGUE @ 26" [66 cm] HIGH | 775 lbs    | 352 kg   |

NOTES: 1. OPTION B2050 SELECT MTC-26, 24" HIGH BARRIER MOUNT OR MPL-20, 48" HIGH OFF BARRIER MOUNT.

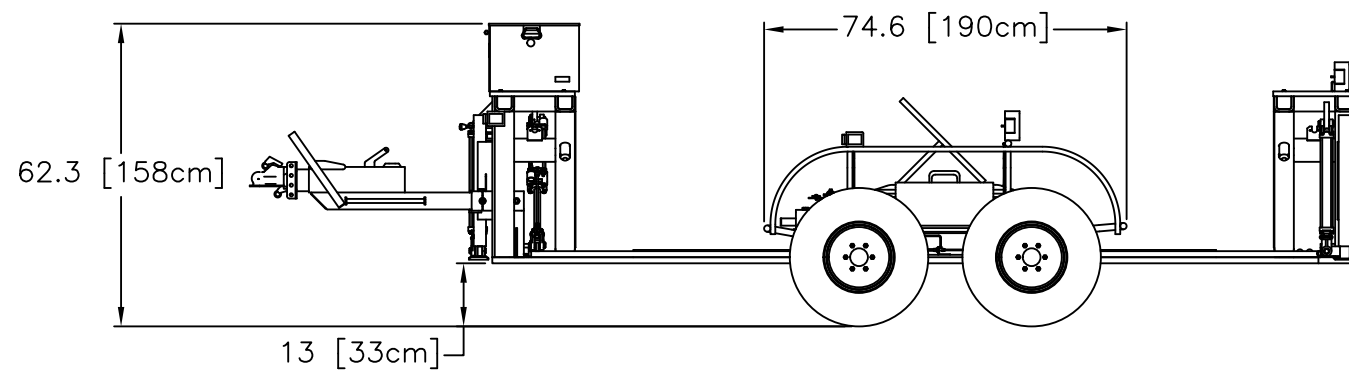
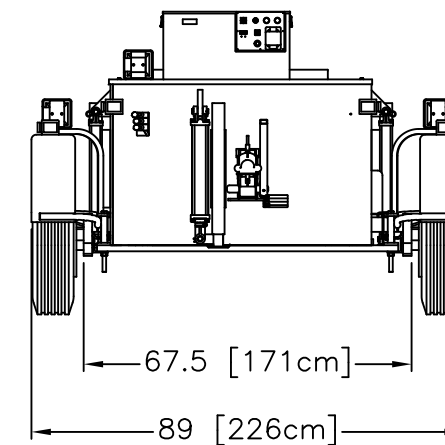
THE DRAWING UNLESS OTHERWISE NOTED, REMAINS THE CONFIDENTIAL PROPERTY AND TRADE SECRET OF DELTA SCIENTIFIC CORPORATION. IT SHALL NOT BE DISCLOSED, REPRODUCED OR USED FOR MANUFACTURING, DESIGN OR CONSTRUCTION WITHOUT THE EXPRESS AUTHORIZATION OF DELTA SCIENTIFIC CORPORATION. THE RECIPIENT BY ACCEPTING THIS DRAWING, ASSUMES CUSTODY THEREOF AND UNDER THE ABOVE TERMS AGREES NOT TO ALLOW USE OF BY UNAUTHORIZED PERSONS.

© 2004 ALL RIGHTS RESERVED


# TOP VIEW



# FRONT VIEW



# SIDE VIEW

|   |  |                                 |  |                                  |  |
|---|--|---------------------------------|--|----------------------------------|--|
| <small>THIS DRAWING UNLESS OTHERWISE NOTED, REMAINS THE CONFIDENTIAL PROPERTY AND TRADE SECRET OF DELTA SCIENTIFIC CORPORATION. IT SHALL NOT BE DISCLOSED, REPRODUCED OR USED FOR MANUFACTURE, DESIGN OR CONSTRUCTION WITHOUT THE EXPRESS AUTHORIZATION OF DELTA SCIENTIFIC CORPORATION. THE RECIPIENT BY ACCEPTING THIS DRAWING, ASSUMES CUSTODY THEREOF AND UNDER THE ABOVE TERMS AGREES NOT TO ALLOW USE OF BY UNAUTHORIZED PERSONS.</small> | <small>UNLESS OTHERWISE NOTED DIMENSIONS ARE IN INCHES</small>                                   |                                 | <b>DELTA SCIENTIFIC CORPORATION</b><br><small>40355 DELTA LANE<br/>         PALMDALE, CA 93551 U.S.A.<br/>         (661) 575-1100 FAX (661) 575-1109</small> |                                  |  |
|   | <small>TOLERANCES</small><br>.X = ±.060/FT<br>.XX = ±.030/FT<br>.XXX = ±.010/FT<br>ANGLES = ±.5° |                                 |   |                                  |  |
|   | <small>SURFACE FINISH</small><br>125 ✓   |                                 | <small>DRWN BY</small><br>T.PERA   | <small>DATE</small><br>11/4/2013 | <small>DRAWING NO.</small><br><b>90123</b> |
|   | <small>REMOVE ALL BURRS &amp; BREAK SHARP EDGES .02 MAX</small>                                  |                                 | <small>CHKD BY</small><br>DATE   | <small>DATE</small><br>DATE      | <small>REV.</small><br>D                   |
| <small>© 2013 ALL RIGHTS RESERVED</small>   |  | <small>SCALE:</small><br>N.T.S. | <small>SHEET</small><br>2 OF 2   |                                  |  |