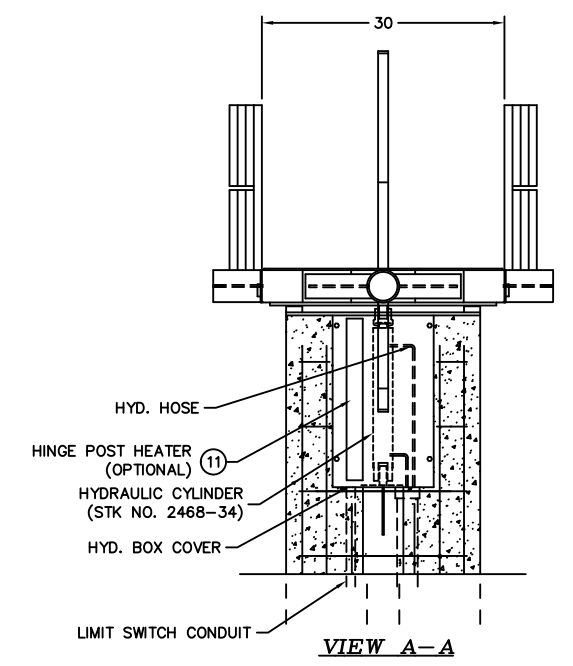
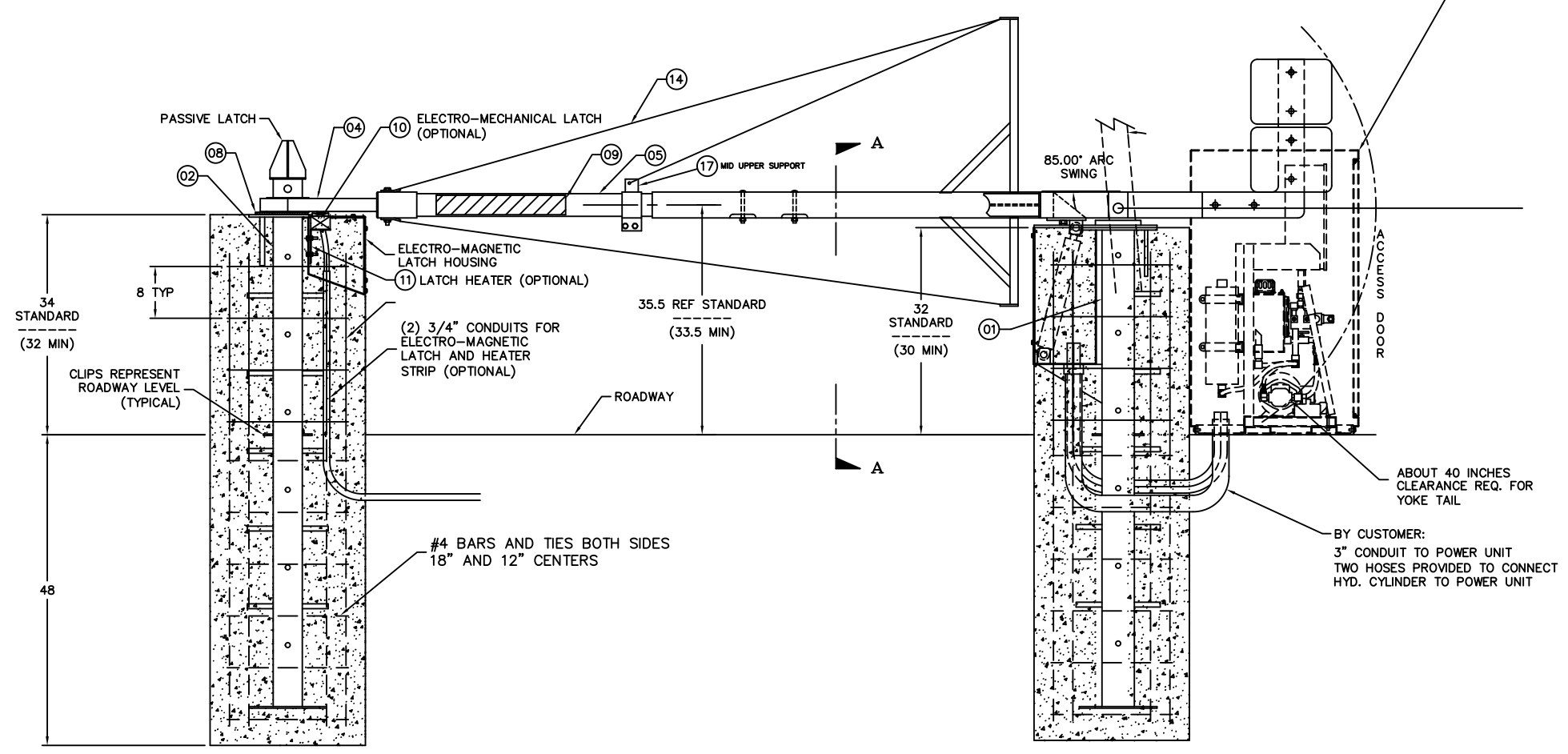


ITEM	REQ'D	DESCRIPTION/MATERIAL	WEIGHT	REF. NO.
01	1	HINGE POST ASSEMBLY,	297 LBS [135 KG]	7536-00
02	1	LATCH POST ASSEMBLY, W/E-M LATCH ENCLOSURE	158 LBS [72 KG]	7535-00
03	1	YOKE ASSEMBLY W/MASTS	165 LBS [75 KG]	8482-00
04	1	CRASH CABLE ASSEMBLY, *'C' = LENGTH	50 LBS [23 KG]	8395-'C'
05	1	CRASH TUBE, *'D' = LENGTH	28 LBS [13 KG]	7705-'D' *
06	*'E'	COUNTERWEIGHT, 35 POUNDS	35 LBS [16 KG]	1907-03
07	8	COUNTERWEIGHT BOLT SET	6 LBS [3 KG]	3484-'F' *
08	1	CABLE EYE CUSHION	1 LBS [1 KG]	7535-01
09	AS REQ	RED REFLECTIVER TAPE, 3" X 20"	1 LBS [1 KG]	2465-109
10	*'G'	ELECTRO-MAGNETIC LATCH, B4050 OPTION	10 LBS [5 KG]	2461-50
11	*'H'	BARRIER HEATER PACKAGE, B4010/B4011 OPTION	1 LBS [1 KG]	2465-XX
12	*'I'	FULLY UP LIMIT SWITCH, B2020 OPTION	1 LBS [1 KG]	2465-29
13	*'J'	FULLY DOWN LIMIT SWITCH, B2021 OPTION	1 LBS [1 KG]	2465-29
14	1	SUPPORT CABLE ASSEMBLY FOR 'C' CABLE	15 LBS [7 KG]	8396-'C'
15	2	COUNTERWEIGHT YOKE EXTENSION	41 LBS [19 KG]	8419-00
16	4	COUNTERWEIGHT BOLT SET, 3/4 X 4" LG	2 LBS [1 KG]	3484-01
17	1	CABLE SUPPORT COLLAR	1.4 LBS [0.6 KG]	10915

DRAWING TABULATION

* SEE ATTACHED FLY-SHEET FOR DATA "A" THRU "F"

HPU MOUNTED DIRECTLY BEHIND BARRIER HINGE BASE (SINGLE BARRIER SYSTEMS ONLY).



- NOTES:**
- LATCH POST EQUIPPED WITH MANUAL LATCH PIN. PADLOCK BY CUSTOMER. (IN ADDITION TO E-M LATCH.)

<small>THIS DRAWING UNLESS OTHERWISE NOTED, REMAINS THE CONFIDENTIAL PROPERTY AND TRADE SECRET OF DELTA SCIENTIFIC CORPORATION. IT SHALL NOT BE REPRODUCED, COPIED, REPRODUCED OR USED FOR MANUFACTURE, DESIGN OR CONSTRUCTION WITHOUT THE EXPRESS AUTHORIZATION OF DELTA SCIENTIFIC CORPORATION. THE REPRODUCER BY ACCEPTING THIS DRAWING, ASSUMES CUSTOMER THEREBY AND UNDER THE ABOVE TERMS AGREES NOT TO ALLOW USE OF BY UNAUTHORIZED PERSONS.</small>	<small>UNLESS OTHERWISE NOTED DIMENSIONS ARE IN INCHES</small>	DELTA SCIENTIFIC CORPORATION 40355 DELTA LANE PALMDALE, CA 93351 U.S.A. (661) 575-1100 FAX (661) 575-1109				
		<small>TOLERANCES</small> .X = ±.060/FT .XX = ±.030/FT .XXX = ±.010/FT ANGLES = ±.5°	<small>SURFACE FINISH</small> 125	<small>REMOVE ALL BURRS & BREAK SHARP EDGES .02 MAX</small>	<small>DRWN BY</small> D. KELBER	<small>DATE</small> 4/7/10
<small>© 2010 ALL RIGHTS RESERVED</small>	<small>SCALE:</small> N.T.S.	<small>SHEET</small> SHEET 1 OF 1				