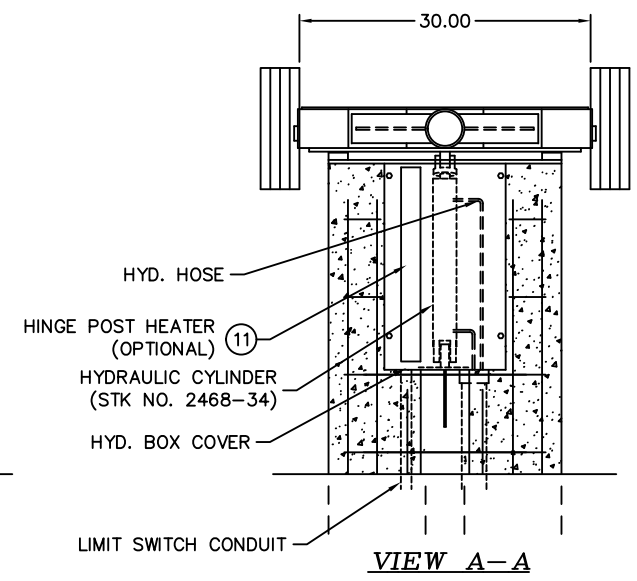
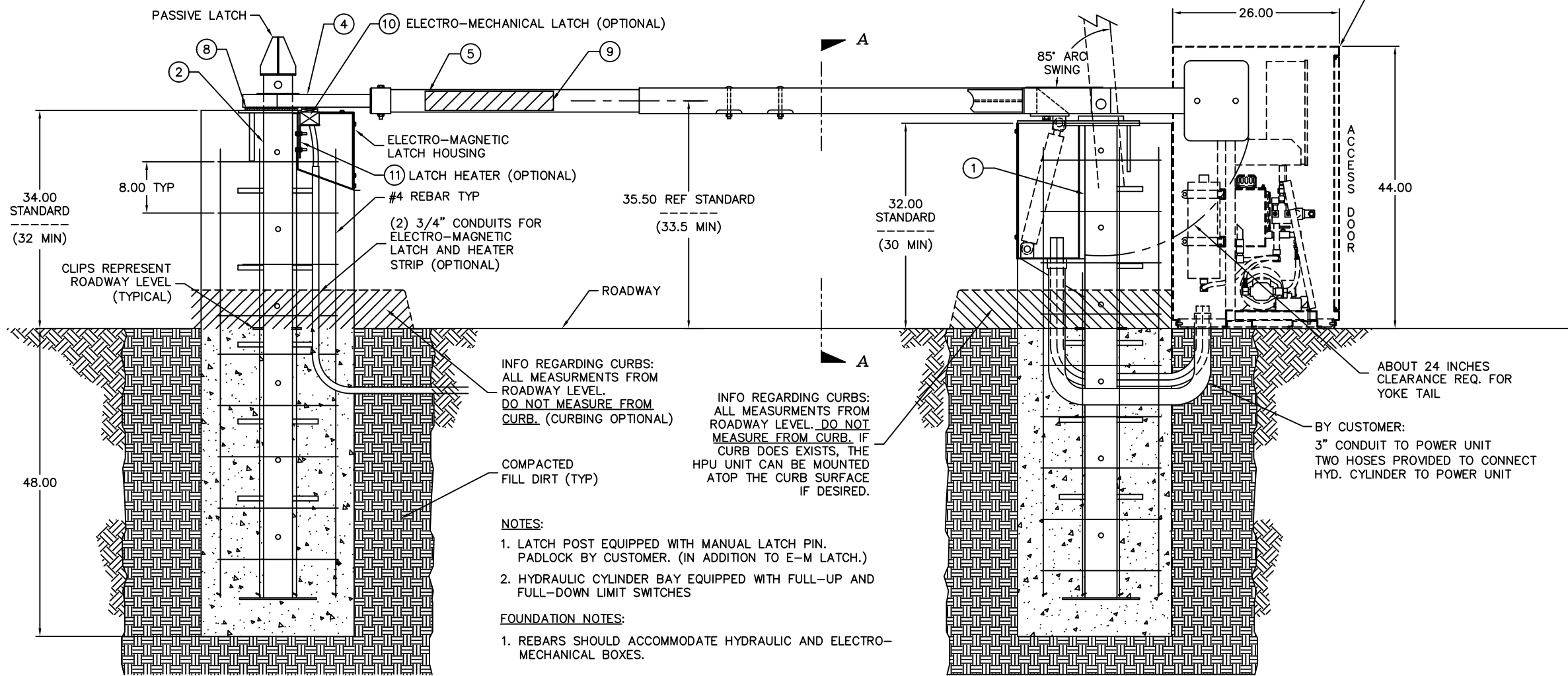


DRAWING TABULATION
 * SEE ATTACHED FLY-SHEET FOR DATA "A" THRU "J"



INFO REGARDING CURBS:
 ALL MEASUREMENTS FROM ROADWAY LEVEL. DO NOT MEASURE FROM CURB. (CURBING OPTIONAL)

INFO REGARDING CURBS:
 ALL MEASUREMENTS FROM ROADWAY LEVEL. DO NOT MEASURE FROM CURB. IF CURB DOES EXIST, THE HPU UNIT CAN BE MOUNTED ATOP THE CURB SURFACE IF DESIRED.

NOTES:
 1. LATCH POST EQUIPPED WITH MANUAL LATCH PIN. PADLOCK BY CUSTOMER. (IN ADDITION TO E-M LATCH.)
 2. HYDRAULIC CYLINDER BAY EQUIPPED WITH FULL-UP AND FULL-DOWN LIMIT SWITCHES

FOUNDATION NOTES:
 1. REBARS SHOULD ACCOMMODATE HYDRAULIC AND ELECTRO-MECHANICAL BOXES.

ELEVATION VIEW

B	ECO 2004-242	MD	11/29/04	
REV.	DESCRIPTION	DRWN BY	DATE	APPVD BY
<small>THIS DRAWING UNLESS OTHERWISE NOTED, REMAINS THE CONFIDENTIAL PROPERTY AND TRADE SECRET OF DELTA SCIENTIFIC CORPORATION. IT SHALL NOT BE DISCLOSED, REPRODUCED OR USED FOR MANUFACTURE, DESIGN OR CONSTRUCTION WITHOUT THE EXPRESS AUTHORIZATION OF DELTA SCIENTIFIC CORPORATION. THE RECEIPT BY ACCEPTING THIS DRAWING, ASSUMES CUSTODY THEREOF AND UNDER THE ABOVE TERMS AGREES NOT TO ALLOW USE OF BY UNAUTHORIZED PERSONS.</small>		DELTA SCIENTIFIC CORPORATION 40355 DELTA LANE PALMDALE, CA 93551 U.S.A. (661) 575-1100 FAX (661) 575-1109		
<small>UNLESS OTHERWISE NOTED DIMENSIONS ARE IN INCHES</small> TOLERANCES .X = ±.060/FT .XX = ±.030/FT .XXX = ±.010/FT ANGLES = ±.5°		STRAIGHT FOUNDATION G. A. CABLE CRASH BEAM - MODEL TT212H		
DRWN BY	J. FRIEND	DATE	12/19/98	REV.
CHKD BY		DATE		90182
APPVD BY		DATE		B
SCALE:	N.T.S.	SHEET	1 OF 1	