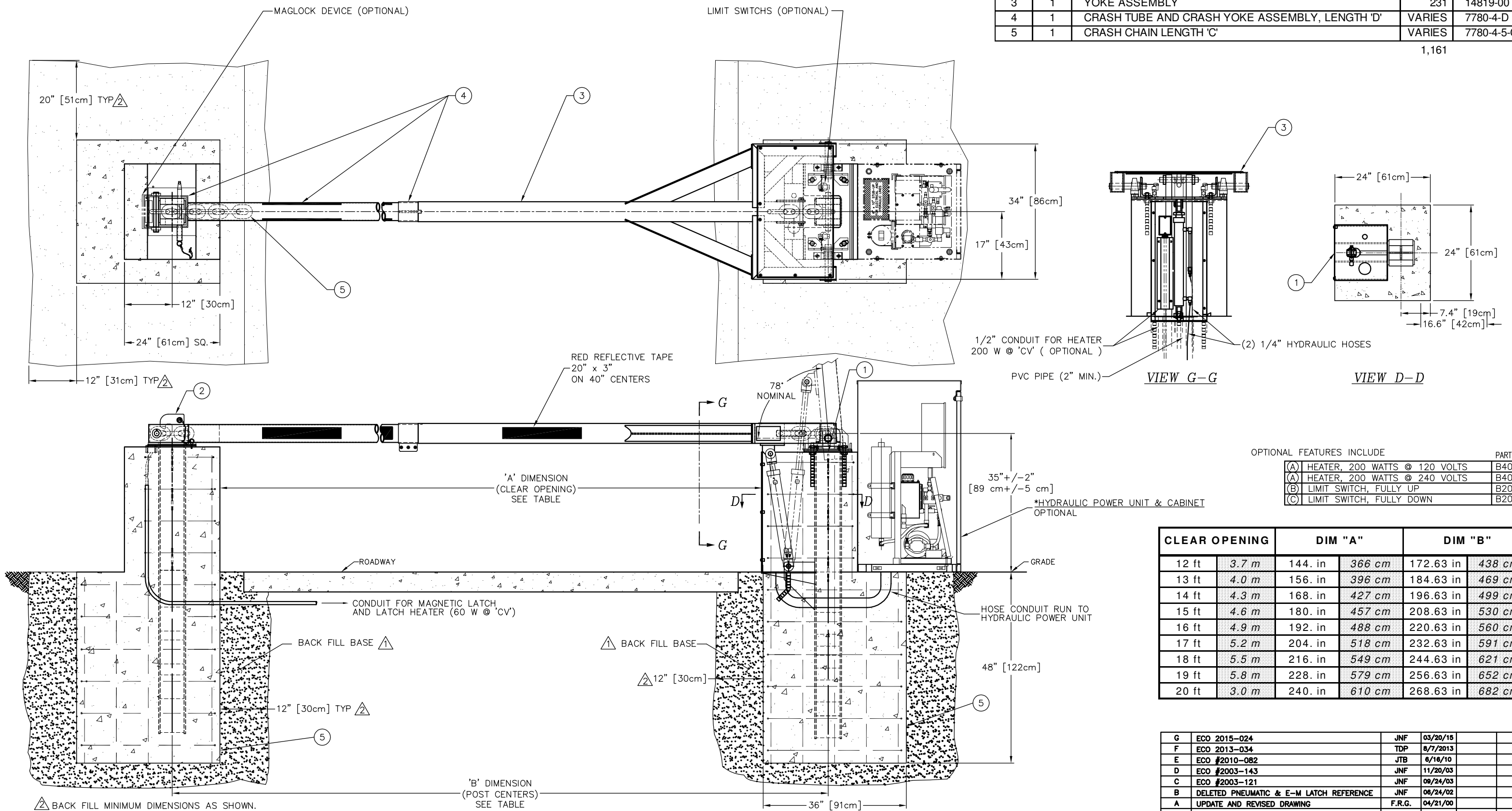


ITEM	REQ'D	DESCRIPTION/MATERIAL	TOT WT	REF NO
1	1	HINGE POST ASSEMBLY	602	14820-00
2	1	LATCH POST ASSEMBLY	328	7822-2
3	1	YOKE ASSEMBLY	231	14819-00
4	1	CRASH TUBE AND CRASH YOKE ASSEMBLY, LENGTH 'D'	VARIABLES	7780-4-D
5	1	CRASH CHAIN LENGTH 'C'	VARIABLES	7780-4-5-C

1,161



OPTIONAL FEATURES INCLUDE

DESCRIPTION	PART NO.
(A) HEATER, 200 WATTS @ 120 VOLTS	B4010
(A) HEATER, 200 WATTS @ 240 VOLTS	B4011
(B) LIMIT SWITCH, FULLY UP	B2021
(C) LIMIT SWITCH, FULLY DOWN	B2020

CLEAR OPENING	DIM "A"	DIM "B"
12 ft	3.7 m	172.63 in
13 ft	4.0 m	184.63 in
14 ft	4.3 m	196.63 in
15 ft	4.6 m	208.63 in
16 ft	4.9 m	220.63 in
17 ft	5.2 m	232.63 in
18 ft	5.5 m	244.63 in
19 ft	5.8 m	256.63 in
20 ft	3.0 m	268.63 in

REV.	DESCRIPTION	DRWN BY	DATE	APPVD BY	DATE
G	ECO 2015-024	JNF	03/20/15		
F	ECO 2013-034	TDP	8/7/2013		
E	ECO #2010-082	JTB	6/16/10		
D	ECO #2003-143	JNF	11/20/03		
C	ECO #2003-121	JNF	08/24/03		
B	DELETED PNEUMATIC & E-M LATCH REFERENCE	JNF	08/24/02		
A	UPDATE AND REVISED DRAWING	F.R.G.	04/21/00		

NOTES: Δ BACK FILL MINIMUM DIMENSIONS AS SHOWN.

SIEVE SIZE	MASS PERCENT PASSING
50 mm (2 in.)	100
25 mm (1 in.)	75-95
9.5 mm (3/8 in.)	40-75
4.75 mm (NO. 4)	30-60
2.00 mm (NO. 10)	20-45
0.425 mm (NO. 40)	15-30
0.075 mm (NO. 200)	5-20

* NOTE: BARRIER SYSTEM CAN BE SUPPLIED WITH HYDRAULIC DRIVE. (HYDRAULIC SYSTEM SHOWN) OR FULL MECHANICAL OPERATION UTILIZING HYDRAULIC COUNTER BALANCE SYSTEM.

DELTA SCIENTIFIC CORPORATION
 40355 DELTA LANE
 PALMDALE, CA 93551 U.S.A.
 (661) 575-1100 FAX (661) 575-1109

MODEL TT212EC CRASH RATED DROP ARM BARRIER SYSTEM

DRWN BY: F.GARCIA DATE: 2/19/99 DRAWING NO.: 90195 SHEET: 1 OF 1

SCALE: 1:12 (D SIZE)