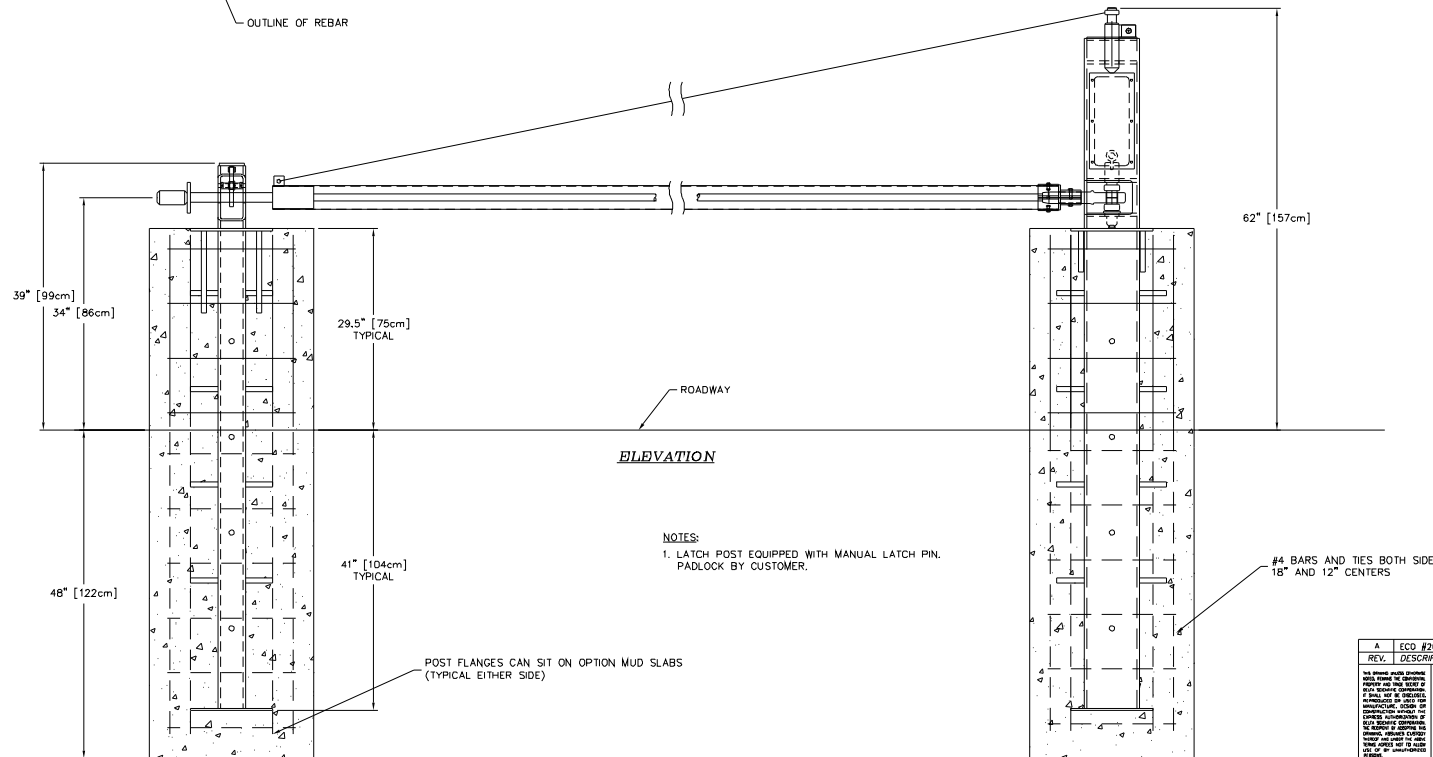
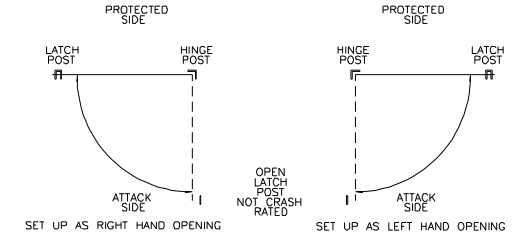
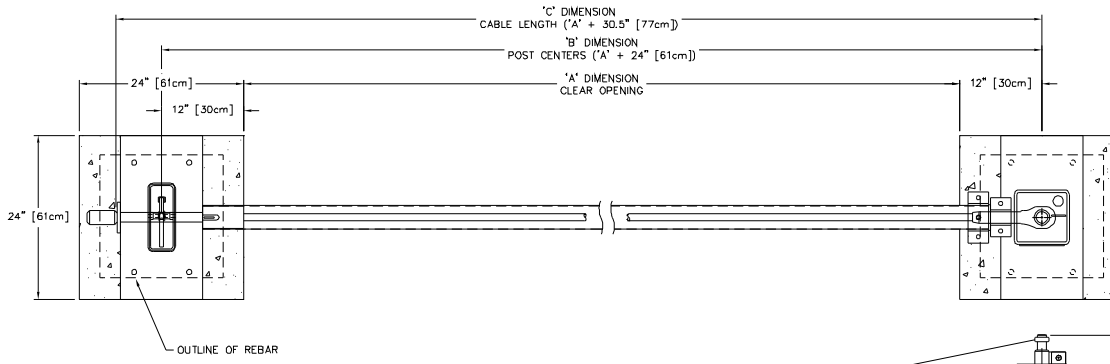


ITEM	REQ'D	DESCRIPTION/MATERIAL	REF. NO.
01	1	LATCH POST ASSEMBLY	7742-00
02	1	HINGE POST ASSEMBLY	7743-00
03	1	CRASH CABLE ASSEMBLY, 'C' DIM = LENGTH	7744-00
04	1	SUPPORT CABLE ASSEMBLY, 'C' DIM = LENGTH	7744-10
05	1	OPEN LATCH POST ASSEMBLY	3666-00



**ELEVATION**

- NOTES:**
- LATCH POST EQUIPPED WITH MANUAL LATCH PIN, PADLOCK BY CUSTOMER.

A ECD #2003-84		JNF	05/14/03	
REV.	DESCRIPTION	DRWN BY	DATE	APPR'D BY
1	MODEL TT218 CABLE CRASH BEAM BARRIER - MANUAL OPERATION	JNF	05/14/03	
<small>ALL DIMENSIONS UNLESS OTHERWISE SPECIFIED ARE IN INCHES. DIMENSIONS ARE IN INCHES UNLESS OTHERWISE SPECIFIED. DIMENSIONS SHALL NOT BE CHANGED WITHOUT THE WRITTEN APPROVAL OF THE DESIGNER. DIMENSIONS SHALL BE TO CENTER UNLESS OTHERWISE SPECIFIED. DIMENSIONS SHALL BE TO CENTER UNLESS OTHERWISE SPECIFIED. DIMENSIONS SHALL BE TO CENTER UNLESS OTHERWISE SPECIFIED.</small>		<b>DELTA</b> DELTA SCIENTIFIC CORPORATION 24801 WEST AVE, STAMFORD, CALIFORNIA 94358, U.S.A. (800) 257-1800 FAX (925) 257-0817		
<small>TOLERANCES          .125" ± 0.005/0.010          .0625" ± 0.002/0.005          .03125" ± 0.001/0.002          ANGLES ± 0.05°</small>		<small>DRWN BY</small> JNF <small>DATE</small> 01/09/03 <small>CHK'D BY</small> <small>DATE</small>	<small>DRWING NO</small> <b>90245</b> <small>REV</small> <b>A</b>	
<small>SURFACE FINISH          125          © 2003 DELTA SCIENTIFIC CORPORATION          ALL RIGHTS RESERVED</small>		<small>APPR'D BY</small> <small>DATE</small>	<small>SCALE</small> 1/8" (D SIZE)	<small>SHEET</small> 1 OF 1