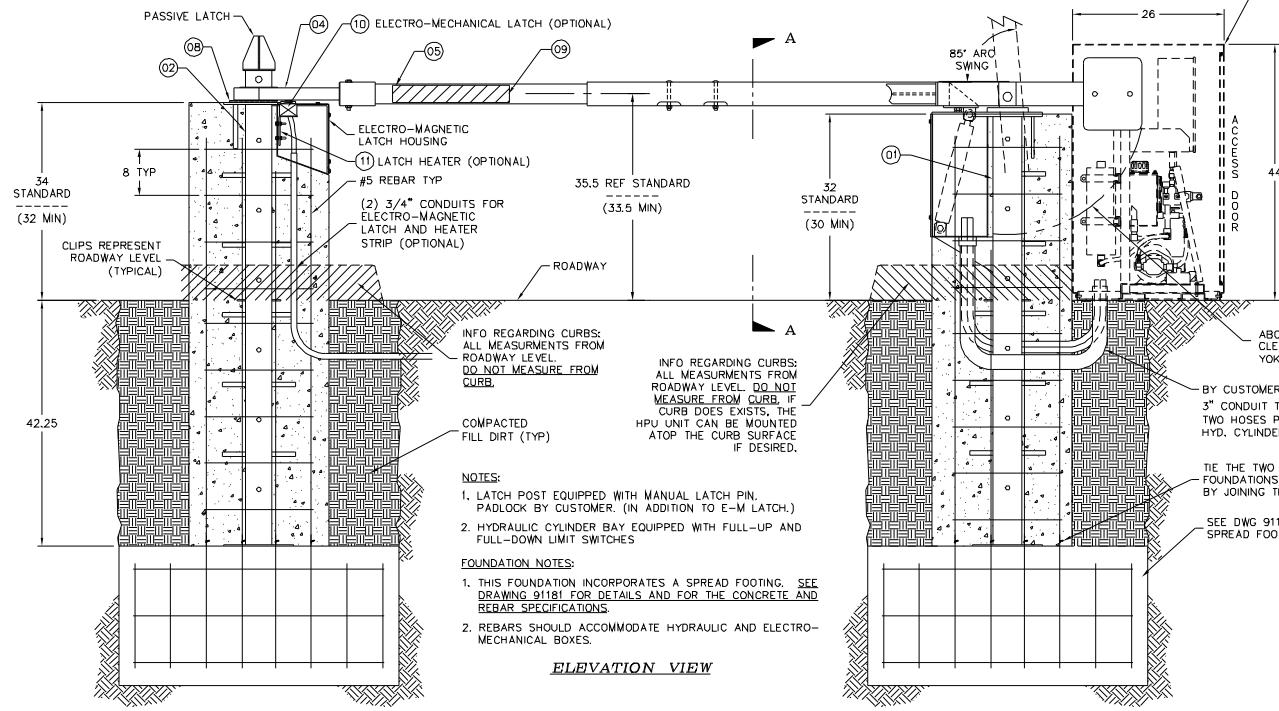


PLAN VIEW

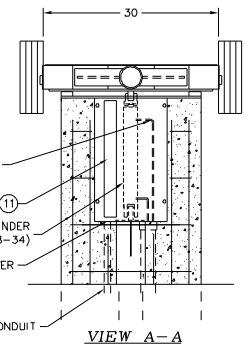
ITEM	REQ'D	DESCRIPTION/MATERIAL	WEIGHT	REF. NO.
01	1	HINGE POST ASSEMBLY,	297 LBS (135 KG)	7536-00
02	1	LATCH POST ASSY, W/E-M LATCH ENCLOSURE	158 LBS (72 KG)	7407-00
03	1	YOKE ASSEMBLY	165 LBS (75 KG)	7304-00
04	1	CRASH CABLE ASSEMBLY, *C = LENGTH	50 LBS (23 KG)	8395-C
05	1	CRASH TUBE, *D = LENGTH	28 LBS (13 KG)	1900-D *
06	*E	COUNTERWEIGHT, 35 POUNDS	35 LBS (16 KG)	1907-03
07	4	COUNTERWEIGHT BOLT SET	4 LBS (2 KG)	3484-F *
08	1	CABLE EYE CUSHION	1 LBS (1 KG)	5385-00
09	10	RED REFLECTIVER TAPE, 3" X 20"	1 LBS (1 KG)	2465-109
10	*G	ELECTRO-MAGNETIC LATCH, B4050 OPTION	10 LBS (5 KG)	2461-50
11	*H	BARRIER HEATER PACKAGE, B4010/B4011 OPTION	1 LBS (1 KG)	2465-XX
12	*I	FULLY UP LIMIT SWITCH, B2020 OPTION	1 LBS (1 KG)	2465-29
13	*J	FULLY DOWN LIMIT SWITCH, B2021 OPTION	1 LBS (1 KG)	2465-29

DRAWING TABULATION  
\* SEE ATTACHED FLY-SHEET FOR DATA "A" THRU "H"



ELEVATION VIEW

HPU MOUNTED DIRECTLY BEHIND BARRIER HINGE BASE (SINGLE BARRIER SYSTEMS ONLY).



VIEW A-A

- NOTES:
- LATCH POST EQUIPPED WITH MANUAL LATCH PIN. PADLOCK BY CUSTOMER. (IN ADDITION TO E-M LATCH.)
  - HYDRAULIC CYLINDER BAY EQUIPPED WITH FULL-UP AND FULL-DOWN LIMIT SWITCHES
- FOUNDATION NOTES:
- THIS FOUNDATION INCORPORATES A SPREAD FOOTING. SEE DRAWING 91181 FOR DETAILS AND FOR THE CONCRETE AND REBAR SPECIFICATIONS
  - REBARS SHOULD ACCOMMODATE HYDRAULIC AND ELECTRO-MECHANICAL BOXES.

UNLESS OTHERWISE NOTED DIMENSIONS ARE IN INCHES

DELTA SCIENTIFIC CORPORATION  
24801 WEST AVE. SIMI VALLEY, CA 91355 U.S.A.  
(800) 207-1800 FAX (800) 207-0617

DELTA  
MODEL TT212H  
CABLE CRASH BEAM BARRIER

DRAWING NO. 90181

DATE 12/19/96

SCALE 1/8" (D SIZE) SHEET 1 OF 1