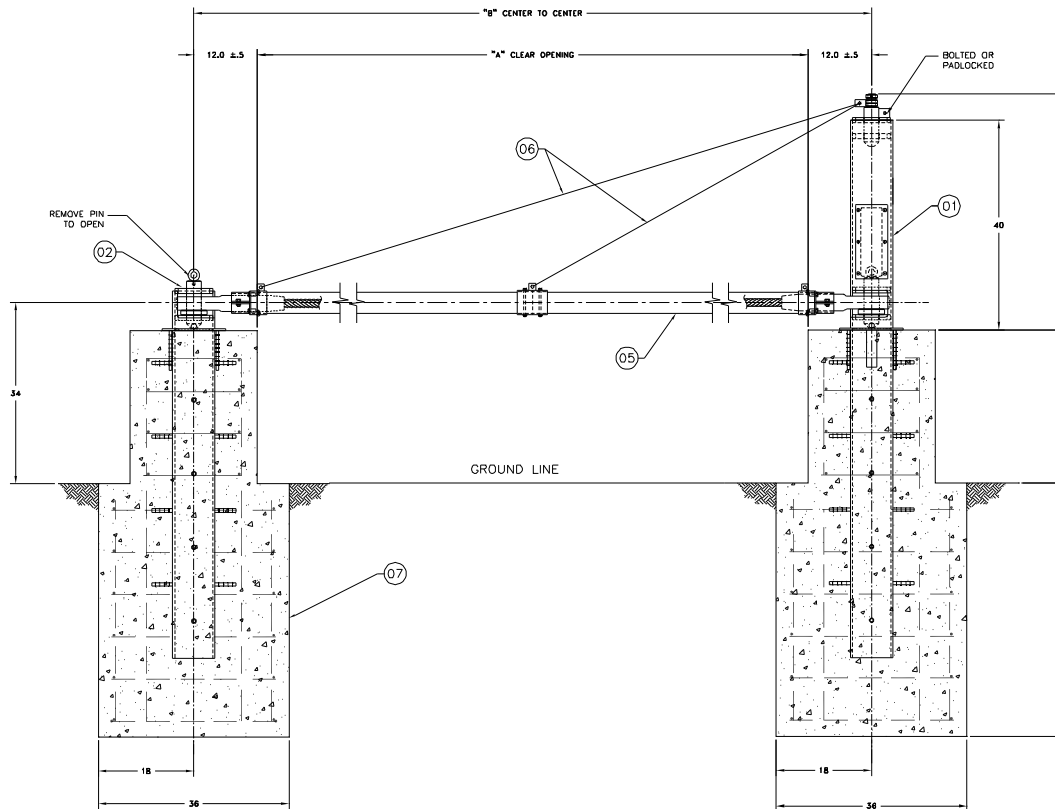
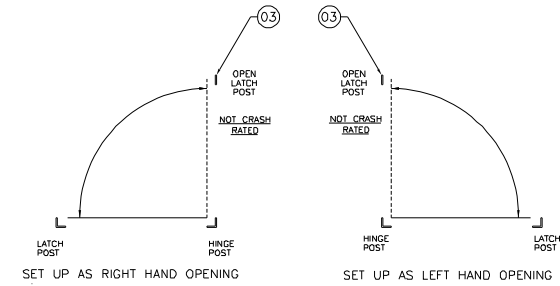
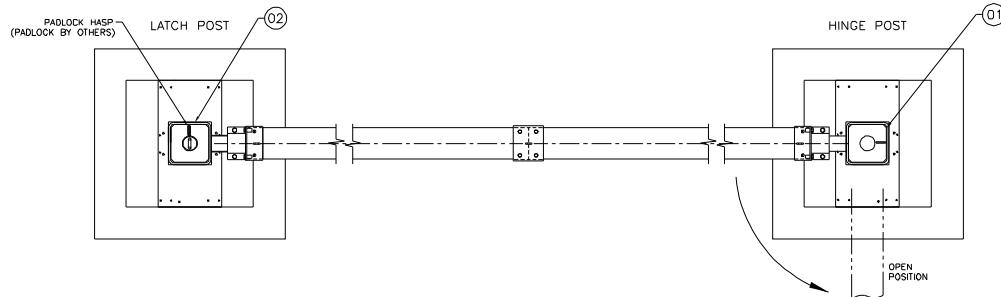


ITEM	REQ'D	DESCRIPTION	STK #
01	1	HINGE POST ASSEMBLY	6161
02	1	LATCH POST ASSEMBLY	5732
03	1	OPEN LATCH POST	5734
04	1	REF. - CRASH CABLE ASSEMBLY	5735
05	1	CRASH BEAM ASSEMBLY	5736
06	1	SUPPORT CABLE ASSEMBLY	9164
07	1	FOUNDATION SPECIFICATION	90251



CLEAR OPENING	DIM "A"		DIM "B"		
12 ft	3.7 m	144. in	366 cm	168. in	427 cm
13 ft	4.0 m	156. in	396 cm	180. in	457 cm
14 ft	4.3 m	168. in	427 cm	192. in	488 cm
15 ft	4.6 m	180. in	457 cm	204. in	518 cm
16 ft	4.9 m	192. in	488 cm	216. in	549 cm
17 ft	5.2 m	204. in	518 cm	228. in	579 cm
18 ft	5.5 m	216. in	549 cm	240. in	610 cm
19 ft	5.8 m	228. in	579 cm	252. in	640 cm
20 ft	6.1 m	240. in	610 cm	264. in	671 cm
21 ft	6.4 m	252. in	640 cm	276. in	701 cm
22 ft	6.7 m	264. in	671 cm	288. in	732 cm
23 ft	7.0 m	276. in	701 cm	300. in	762 cm
24 ft	7.3 m	288. in	732 cm	312. in	792 cm

B	ITEM 03 WAS 3666	JFW	6/3/04
A	REPLACED DWG 5737 & 8898 WITH 9164	R.T.	5/21/03
REV	DESCRIPTION	APPVD	DATE
<small>           UNLESS OTHERWISE NOTED DIMENSIONS ARE IN INCHES            TOLERANCES            XX = ±.000/+.010            XXX = ±.000/+.015            ANGLES = ±.5°            SURFACE FINISH            125/7         </small>			
<small>           DELTA SCIENTIFIC CORPORATION            24901 WEST AVE. STANBRO            VALDIA, CA 91355 U.S.A.            (805) 257-1800 FAX (805) 257-0817         </small>		<small>           DRAWING NO.  <b>90250</b> </small>	
<small>           DRAWN BY            K.M.JOWAL            DATE            06/30/95         </small>		<small>           REV.  <b>B</b> </small>	
<small>           CHECKED BY            K.M.JOWAL            DATE            06/30/95         </small>		<small>           SCALE            1:10 (D SIZE)         </small>	
<small>           © 2000            ALL RIGHTS RESERVED         </small>		<small>           REMOVE ALL DIMS &amp; BREAK            SHARP CORNERS 2X MAX         </small>	
<small>           APPROV BY            J.FRENCH         </small>		<small>           SHEET            1 OF 1         </small>	