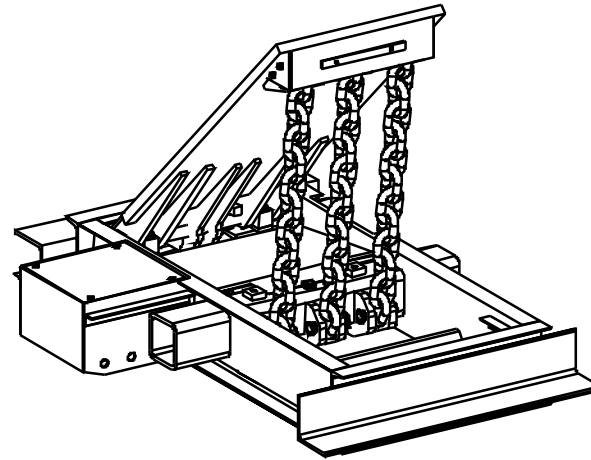


PLAN VIEW - DOWN POSITION



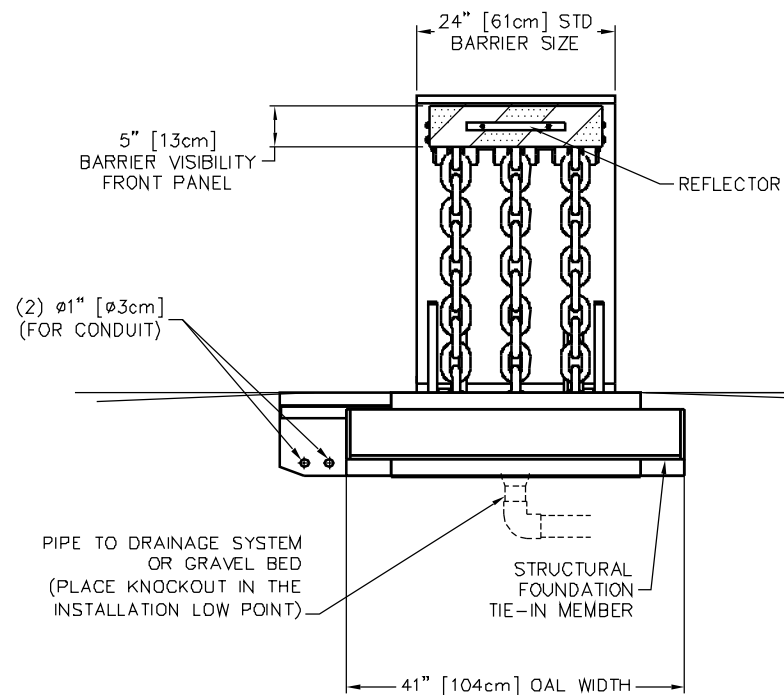
NOTES:

- OPTIONAL FEATURES (PARTIAL)

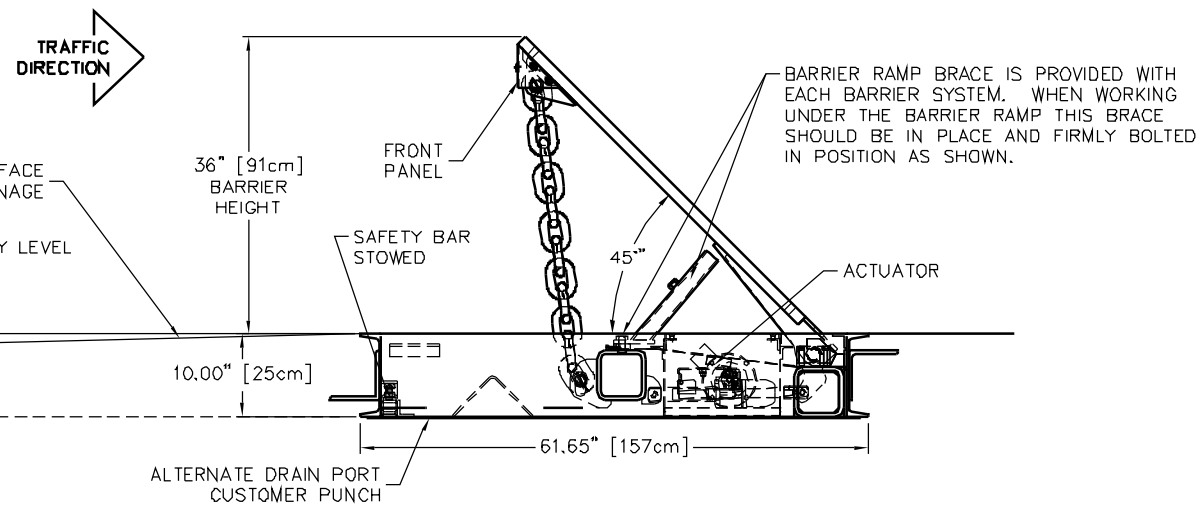
	PART NO.
(A) HEATER, 300 WATTS @ 120 VOLTS	B1283
(A) HEATER, 300 WATTS @ 240 VOLTS	B1284
(D) HOT-DIP GALVANIZING PRIOR TO PAINTING	
- COLOR OPTIONS:

SCHEME 90130-20: WHITE W/4" WIDE YELLOW STRIPES
SCHEME 90130-25: BLACK W/4" WIDE YELLOW STRIPES
SCHEME 90130-30: WHITE W/4" WIDE RED STRIPES

FOUNDATION - ASBESTOS FREE ASPHALT EMULSION UNDERCOAT.
- ALL STEEL MEMBERS PER AISC STANDARDS WELDING DESIGN CRITERIA AWS D1.1, LATEST REVISION.
- ALL VISIBLE TOP STEEL COMPONENTS SANDBLASTED TO NEAR WHITE METAL AFTER FABRICATION AND PRIOR TO COATING.
- REFER TO DRAWING 91130EM FOR FOUNDATION SPECIFICATION



FRONT ELEVATION - UP POSITION



SIDE ELEVATION - UP POSITION

<small>THIS DRAWING UNLESS OTHERWISE NOTED, REMAINS THE CONFIDENTIAL PROPERTY AND TRADE SECRET OF DELTA SCIENTIFIC CORPORATION. IT SHALL NOT BE DISCLOSED, REPRODUCED OR USED FOR MANUFACTURE, DESIGN OR CONSTRUCTION WITHOUT THE EXPRESS AUTHORIZATION OF DELTA SCIENTIFIC CORPORATION. THE REGISTRAR ACCORDING THIS DRAWING ASSUMES CUSTOMER'S OBLIGATION AND UNDER THE REGISTRATION AGREEMENTS NOT TO ALLOW USE OF IT BY UNAUTHORIZED PERSONS.</small>	<small>UNLESS OTHERWISE NOTED DIMENSIONS ARE IN INCHES</small>	DELTA SCIENTIFIC CORPORATION 40355 DELTA LANE PALMDALE, CA 93551 U.S.A. (861) 575-1100 FAX (661) 575-1109	
		DSC2000EM(1) PHALANX BARRIER GENERAL ARRANGEMENT	
<small>TOLEANCES</small> .x = ± .060/FT .xx = ± .030/FT .xxx = ± .010/FT ANGLES = ± .5°	<small>SURFACE FINISH</small> 125	<small>DRWN BY</small> J. STAGGS	<small>DATE</small> 9/13/10
<small>REMOVE ALL BURRS & BREAK SHARP EDGES .02 MAX</small>	<small>SCALE:</small> 1:12 (D SIZE)	<small>CHKD BY</small> DATE	<small>REV.</small> -
<small>© 2006 ALL RIGHTS RESERVED</small>	<small>PHALANX™</small>	<small>APPROV BY</small> DATE	<small>SHEET</small> 1 OF 1