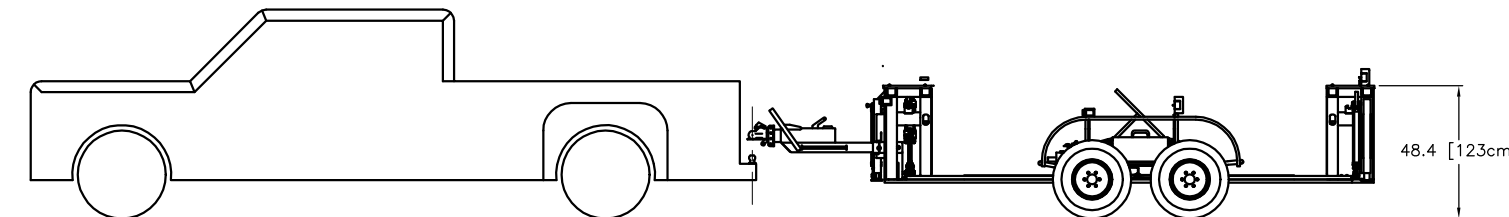
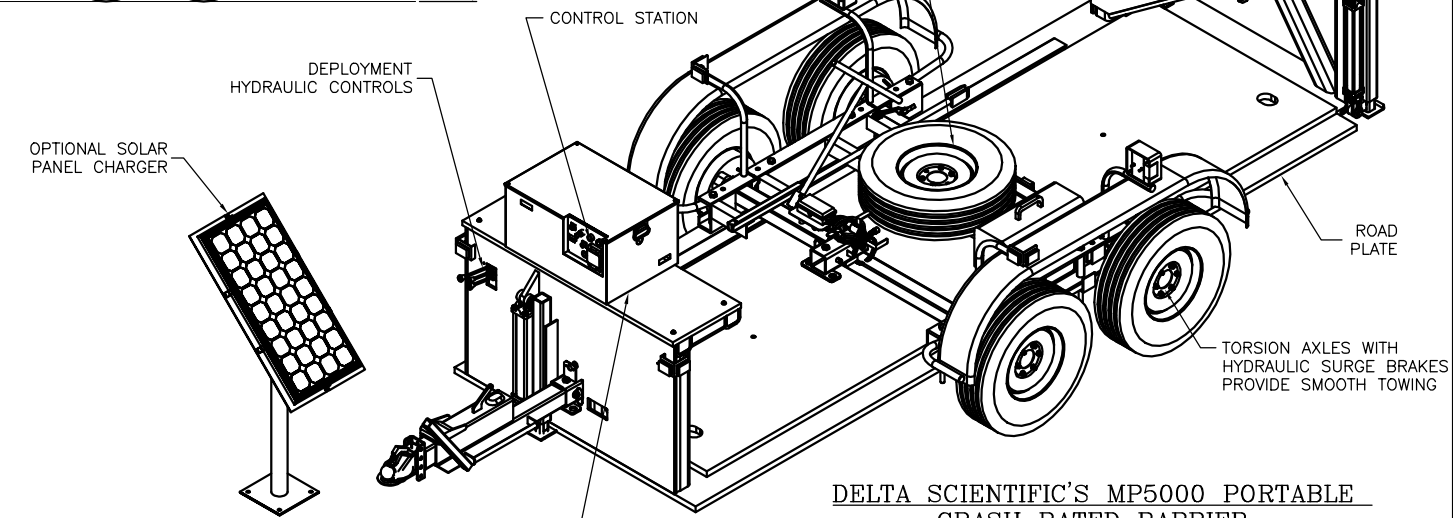


OPTIONS	PART NO.
HITCH BALL, 2-5/16"	2461-130
LUNETTE EYE, 3" (EU COMPLIANT)	2461-129
SOLAR PANEL ASSEMBLY	90593
CABLE KIT, 120 VOLTS, 60 Hz	9149-120
CABLE KIT, 220 VOLTS, 50 Hz	9149-220
TURN TABLE, BARRIER	9251
REMOTE PUSH BUTTON STATION	MPL-4050-20'
TRAFFIC SIGNAL, DOWN L/S, MTC-26 (24")	B2050
FULLY DOWN LIMIT SWITCH (9056-3)	B2010
POST, SIGNAL LIGHT, 48" HIGH	MPL-20



TOW EXAMPLE



DELTA SCIENTIFIC'S MP5000 PORTABLE CRASH RATED BARRIER

THE SYSTEM HAS BEEN TESTED IN FULL SCALE CONFIGURATION AT AN INDEPENDENT TESTING LABORATORY AND HAS BEEN CERTIFIED TO HAVE MET THE U.S. DEPARTMENT OF STATE TESTING DOCUMENT SD-STD-02.01 DATED APRIL 1985 WITH RATINGS OF K4-L1 (FULL SCALE CRASH TEST FOR CERTIFICATION SUCCESSFULLY CONDUCTED BY KARCO ENGINEERING, ADELANTO, CA ON MAY 29, 2003). IT IS CONFIGURED FOR EXPEDITED DEPLOYMENT AND, AS NEEDED, RETRIEVAL AND RELOCATION.

THIS BARRIER SYSTEM CAN BE SITED ON EXISTING CONCRETE OR ASPHALT ROADWAYS OR VERGES; LEVEL COMPACTED SOILS OR SOME COMBINATION OF THESE. NO EXCAVATION OR SUB-SURFACE PREPARATION IS REQUIRED.

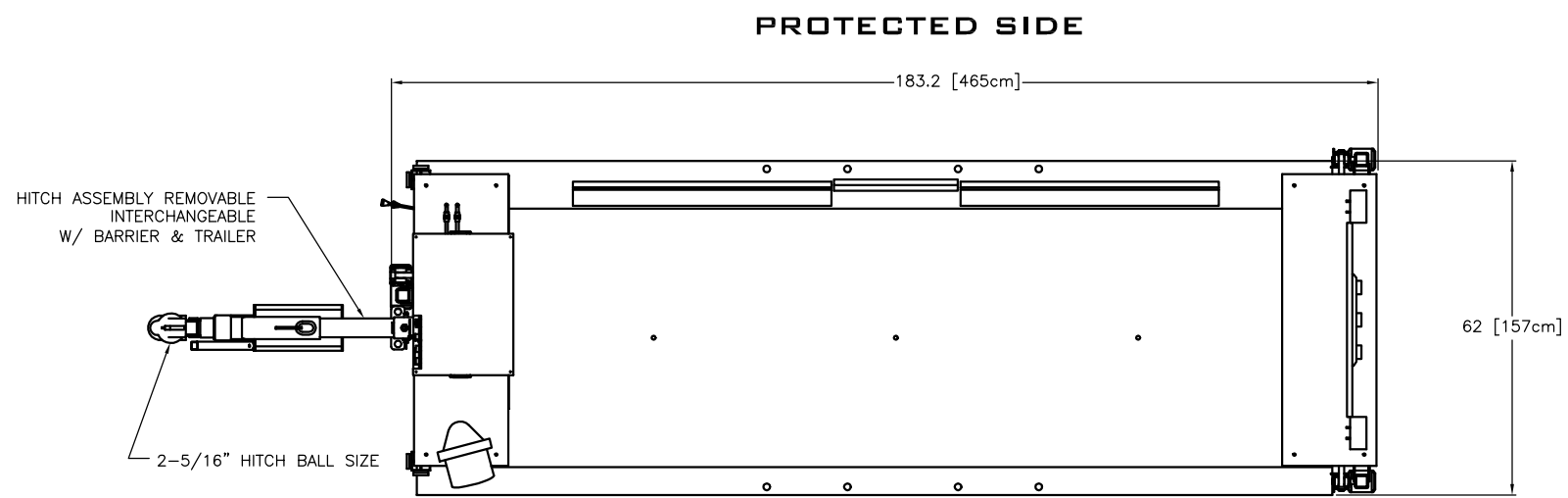
THE MP5000 IS A PHALANX TYPE BARRIER RAMP TOTALLY SELF CONTAINED WITH FREE PASSAGE BETWEEN BUTTRESSES OF 12 FT. (144IN.). LOW PROFILE FREE TRAFFIC FLOW BARRICADE RAMP. SELF CONTAINED DEPLOYABLE RAMPS WITH MAXIMUM ROAD CLEARANCE.

THE BARRICADE IS DEPLOYED AFTER BEING TOWED TO THE SITE AND THEN LOWERED INTO POSITION BY MEANS OF HYDRAULIC JACKS. IT IS RETRIEVED BY LIFTING THE BARRIER TO THE 'TOW' POSITION USING THE SAME HYDRAULIC JACKS. NO HAND CRANKING REQUIRED. ONCE SITED THE WHEELS ARE STORED AND THEN VEHICLE RAMPS ARE FOLDED OUT, COMPLETING THE DEPLOYMENT. ESTIMATED DEPLOYMENT TIME - LESS THAN 15 MINUTES.

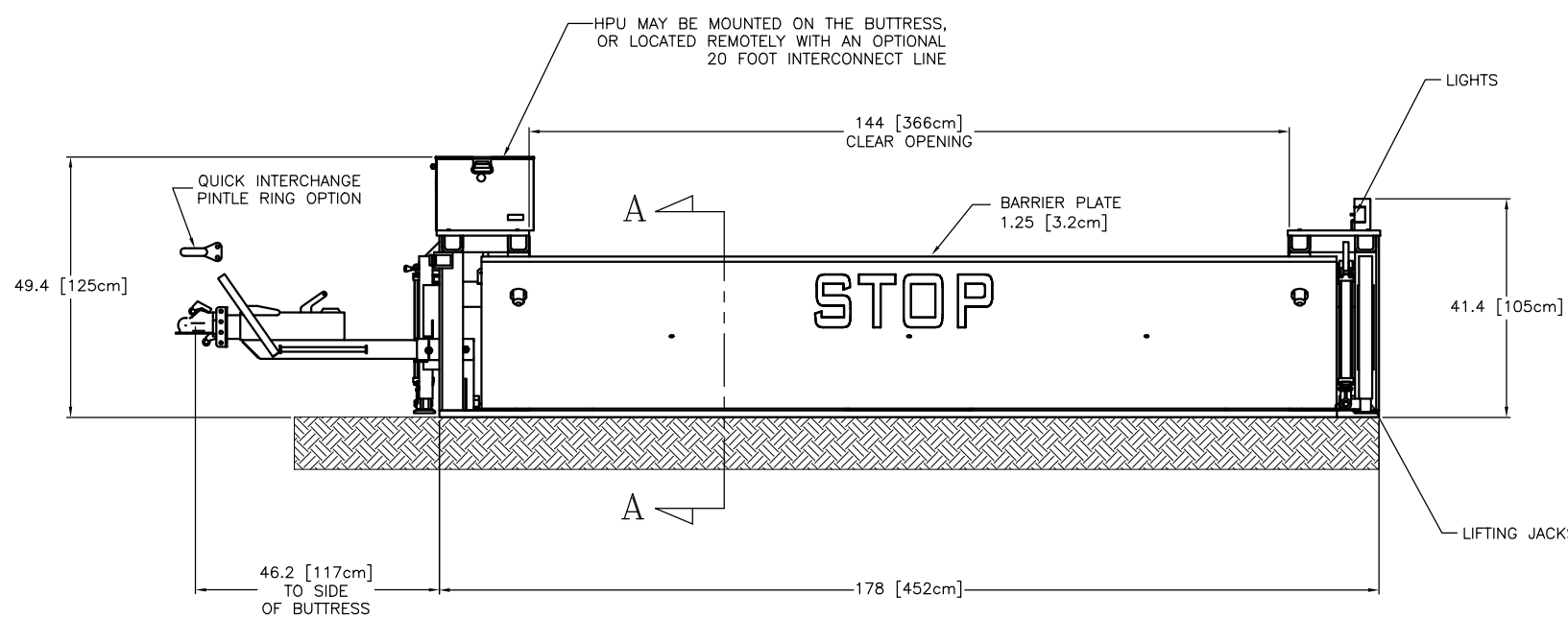
BOTH THE OPERATION OF THE BARRIER AS WELL THE INITIAL DEPLOYMENT (AND RETRIEVAL) IS PUSH BUTTON CONTROLLED. THE STANDARD SYSTEM HAS A BATTERY OPERATED HYDRAULIC POWER UNIT, REPLENISHED FROM EITHER A SOLAR ARRAY OR FROM LOCAL LOW VOLTAGE SOURCES.

OPTIONALLY A DELTA HYDRAULIC POWER UNIT OPERATED ON LOCALLY SUPPLIED POWER OR A FULL MANUAL SYSTEM, OR COMBINATION THEREOF IS AVAILABLE. BOTH THE LOCALLY POWERED AND THE BATTERY POWERED HYDRAULIC PUMPING UNIT CAN BE SIZED TO PROVIDE PASS-THROUGH RATES SUITABLE FOR MOST INSPECTION AND IDENTIFICATION STATION REQUIREMENTS.

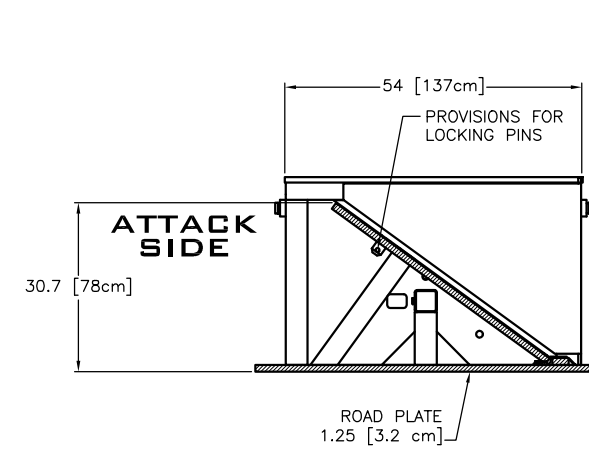
AVAILABLE OPERATING MODES INCLUDE, FULL AUTOMATIC, REMOTE- HARD LINE, REMOTE-RADIO, CARD READER, AND KEY SWITCH AND BY LOCAL GUARD PUSH BUTTON STATION, MASTER(S) AND SLAVE(S) CONTROL PANELS...ETC. - OR BY COMBINATIONS THEREOF.



ATTACK SIDE PLAN VIEW



ELEVATION



SECTION A-A

DESCRIPTION	WEIGHTS	
BARRIER ONLY	9,347 lbs	4,240 kg
TRAILER ONLY	1,159 lbs	526 kg
BARRIER W/TRAILER	10,506 lbs	4,765 kg
TONGUE @ 26" [66 cm] HIGH	775 lbs	352 kg

REV.	DESCRIPTION	DRWN BY	DATE	APPVD BY	DATE
D	ECO 2013-055	T.D.P	11/14/13		
C	ECO 2011-129	M.C.	01/03/12	J.M.	01/24/12
B	ECO 2011-083	M.C.	8/13/11		
A	ECO 2011-069	M.C.	5/13/11		

THIS DRAWING UNLESS OTHERWISE NOTED, REMAINS THE CONFIDENTIAL PROPERTY AND TRADE SECRET OF DELTA SCIENTIFIC CORPORATION. IT SHALL NOT BE DISCLOSED, REPRODUCED OR USED FOR MANUFACTURE, DESIGN OR CONSTRUCTION WITHOUT THE EXPRESS AUTHORIZATION OF DELTA SCIENTIFIC CORPORATION. THE RESPONDER BY ACCEPTING THIS DRAWING, ASSUMES CUSTODY THEREOF AND UNDER THE ABOVE TERMS AGREES NOT TO ALLOW USE OF BY UNAUTHORIZED PERSONS.

UNLESS OTHERWISE NOTED DIMENSIONS ARE IN INCHES

TOLERANCES
.X = ±.250/FT
.XX = ±.125/FT
.XXX = ±.063/FT

DELTA SCIENTIFIC CORPORATION
40355 DELTA LANE
PALMDALE, CA 93551 U.S.A.
(661) 575-1100 FAX (661) 575-1109

MP5K STANDARD (12') PORTABLE ROADWAY BARRIER GENERAL ARRANGEMENT

DRWN BY J. MANOR	DATE 5/3/11	DRAWING NO. 90123	REV. D
CHKD BY	DATE	SCALE: 1:18 (D SIZE)	SHEET 1 OF 2
APPVD BY	DATE		

© 2004 ALL RIGHTS RESERVED

NOTES: 1. OPTION B2050 SELECT MTC-26, 24" HIGH BARRIER MOUNT OR MPL-20, 48" HIGH OFF BARRIER MOUNT.