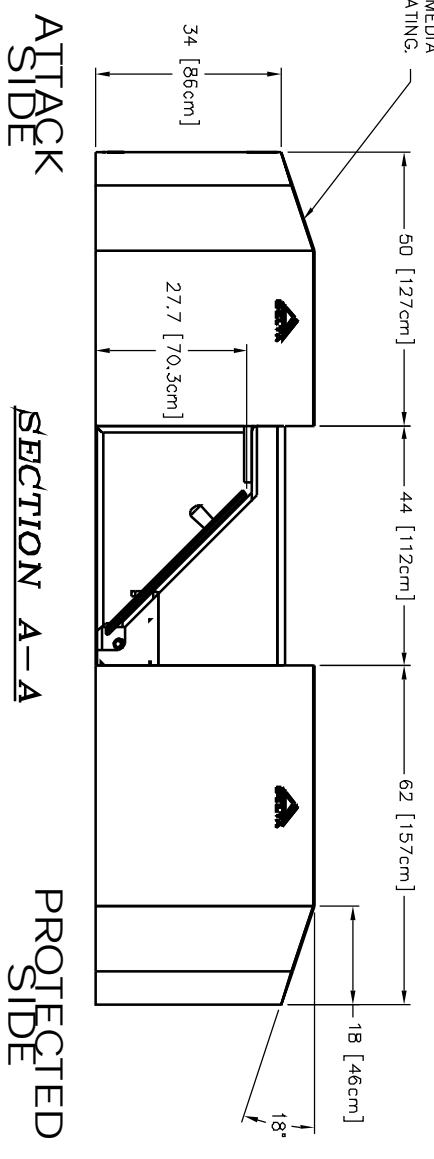
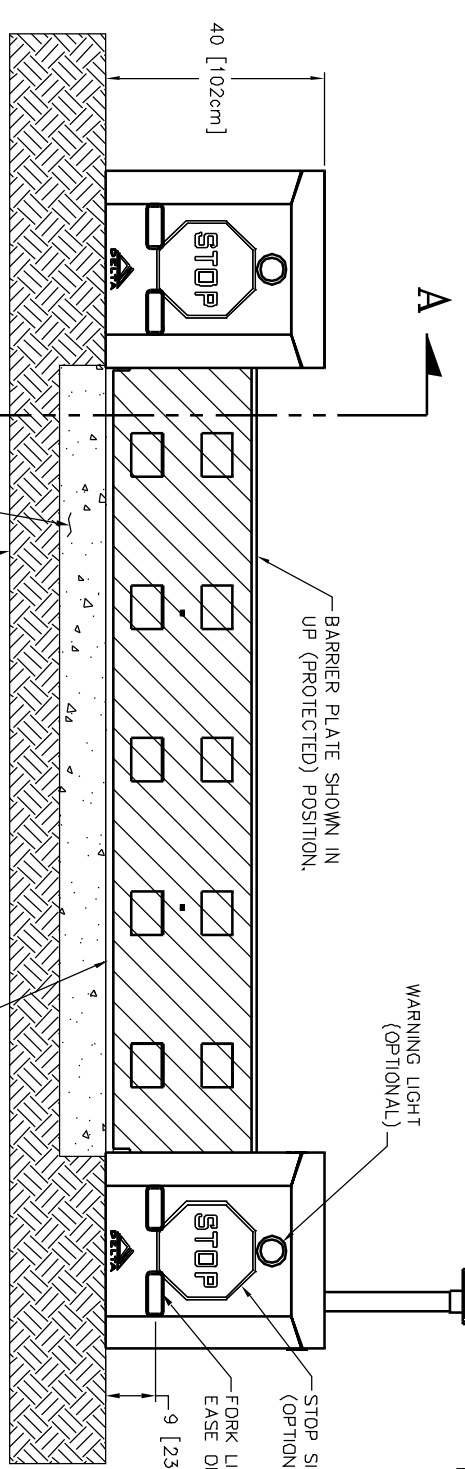


DELTA SCIENTIFIC'S DSC1100 TRANSPORTABLE CRASH RATED BARRIER

DELTA'S DSC1100 TRANSPORTABLE BARRIER CONSISTS OF A HYDRAULIC POWER UNIT*, TWO INERTIAL MODULES, TWO BUTRESS/INERTIAL MODULES AND A BARRIER PLATE. COMPONENTS CAN BE QUICKLY DEPLOYED BY POSITIONING THE MODULES IN PLACE AND INTERLOCKING THEM WITH THE PROVIDED PINS. WHEN THE BARRIER IS NO LONGER REQUIRED, BARRIER MAY BE DISASSEMBLED AND STORED FOR FUTURE DEPLOYMENT.

*OPTIONAL FULL MANUAL OPERATION

INERTIAL MODULES (4) CAN BE FILLED REMOTELY AND SITED AS NEEDED, OR THEY MAY BE FILLED ON SITE. CRASH RATINGS BASED ON MODULES FILLED WITH CONCRETE. OTHER FILL MEDIA CAN CHANGE RATING.



ELEVATION

OPTIONAL FEATURES INCLUDE

Ⓐ	HEATER, 400 WATTS @ 120 VOLTS	B3020
Ⓑ	HEATER, 400 WATTS @ 240 VOLTS	B3021

REV.	DESCRIPTION	DRWN BY	DATE	APPVD BY	DATE
E	ECO 2003-145	DCM	12/04/03		
D	ECO 2003-77	MP	03/04/24		
C	ECO 2003-50	MP	03/01/3		

REV.	DESCRIPTION	DRWN BY	DATE	APPVD BY	DATE
A	ECO 2002-22	MP	02/11/01		
B	ECO 2003-44	MP	03/01/24		

DELTA SCIENTIFIC CORPORATION
 24901 WEST AVE., STANFORD, VALENCIA, CA 91355 U.S.A.
 (861) 267-1800 FAX (861) 267-0617

MODEL DSC1100 - TRANSPORTABLE BARRIER SYSTEM

DRWN BY: DATE: 02/08/01
 CHECK BY: DATE: 02/08/01
 DRAWING NO: 90375
 SHEET 1 OF 2