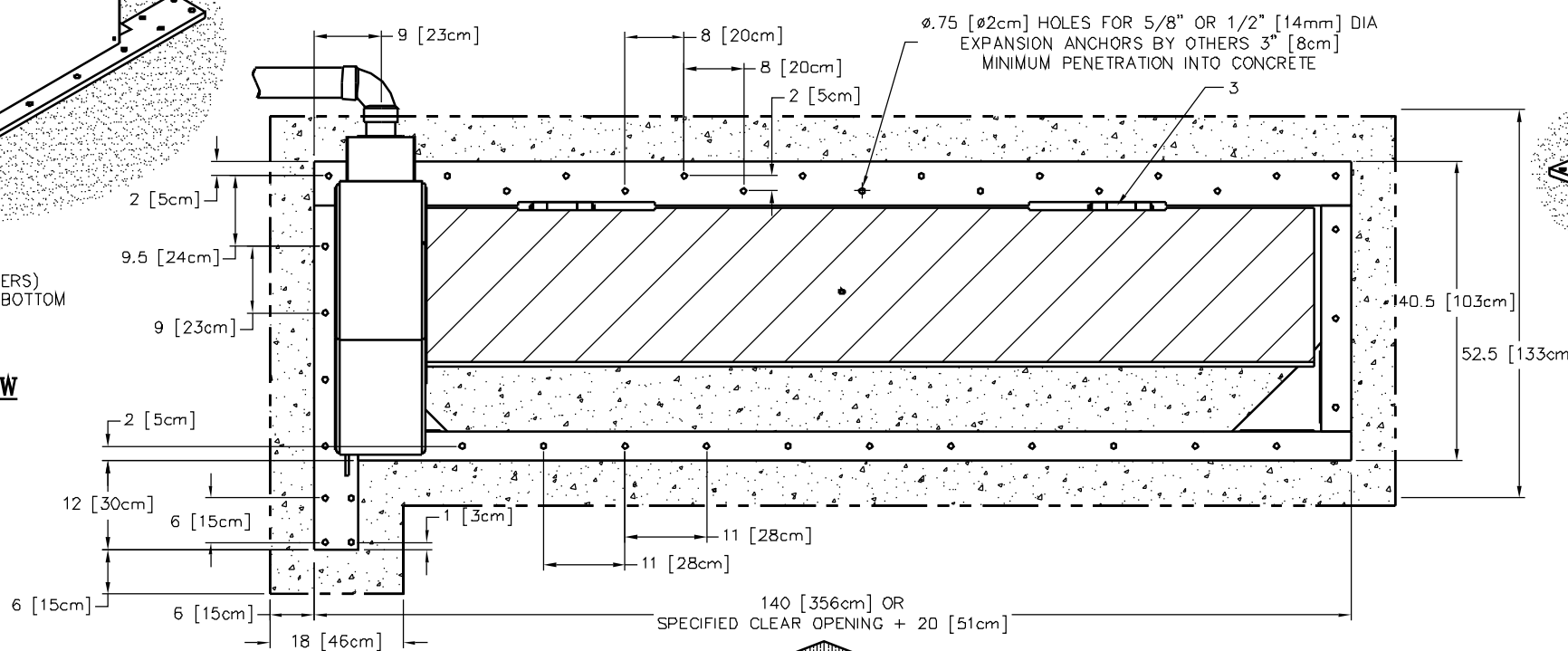
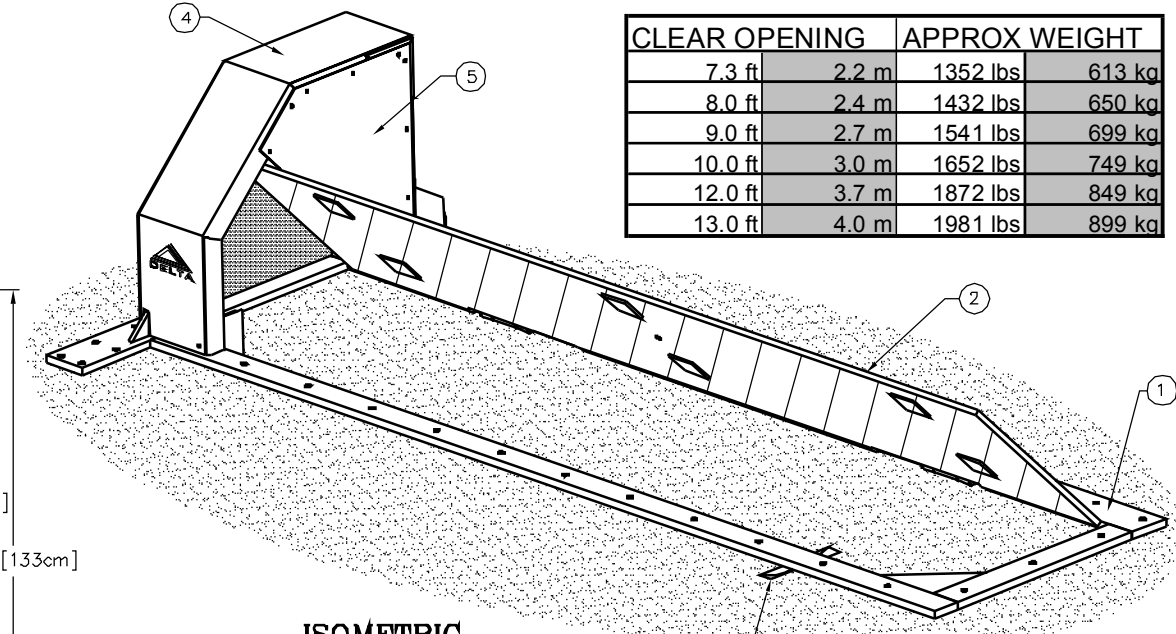


CONDUIT FEED (BY OTHERS) MAY ENTER FROM THE BOTTOM OR FROM THE SIDE

BACK VIEW



PLAN VIEW
DIRECTION OF CONTROLLED TRAFFIC



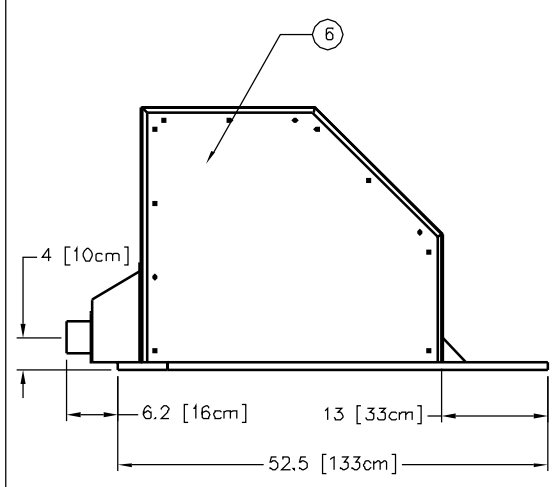
ISOMETRIC

PROVIDE 1"D [3cm] X 2"W [5cm] TRENCH AT LOW POINT OF BARRIER FOR WATER EVACUATION

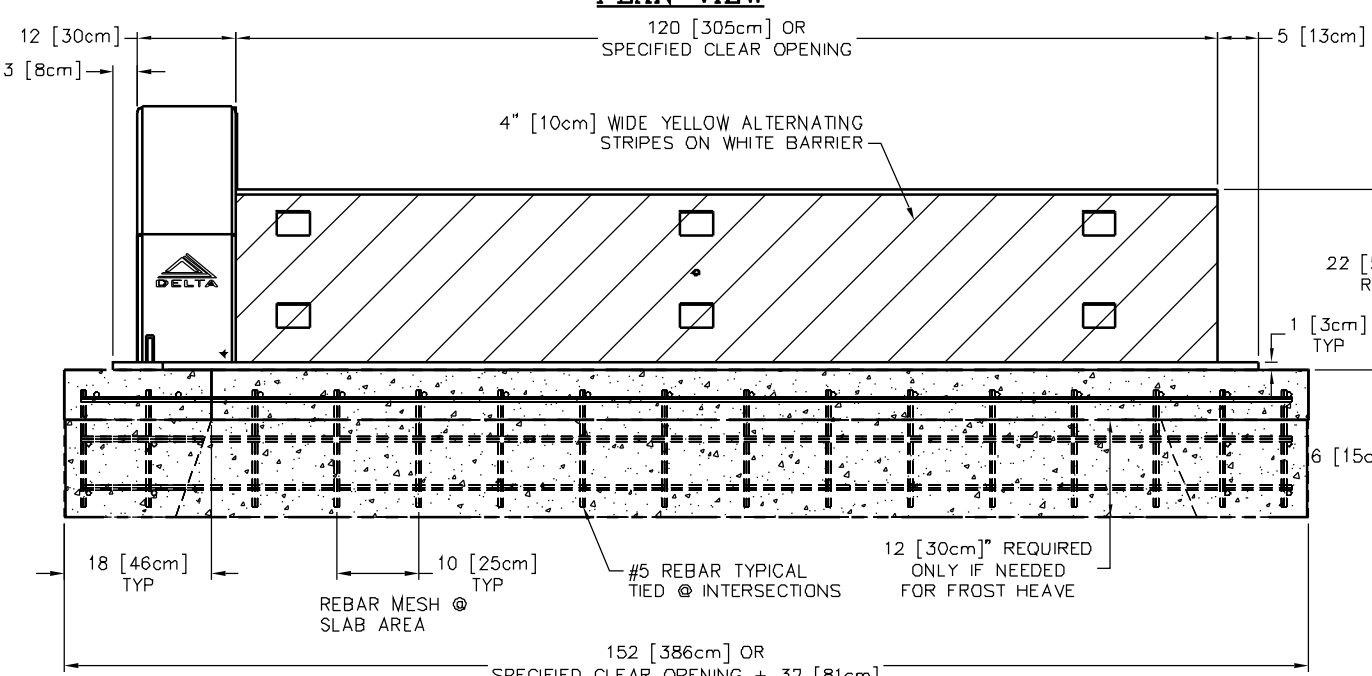
CLEAR OPENING		APPROX WEIGHT	
7.3 ft	2.2 m	1352 lbs	613 kg
8.0 ft	2.4 m	1432 lbs	650 kg
9.0 ft	2.7 m	1541 lbs	699 kg
10.0 ft	3.0 m	1652 lbs	749 kg
12.0 ft	3.7 m	1872 lbs	849 kg
13.0 ft	4.0 m	1981 lbs	899 kg

CONCRETE NOTES & RECOMMENDED SPECIFICATIONS:

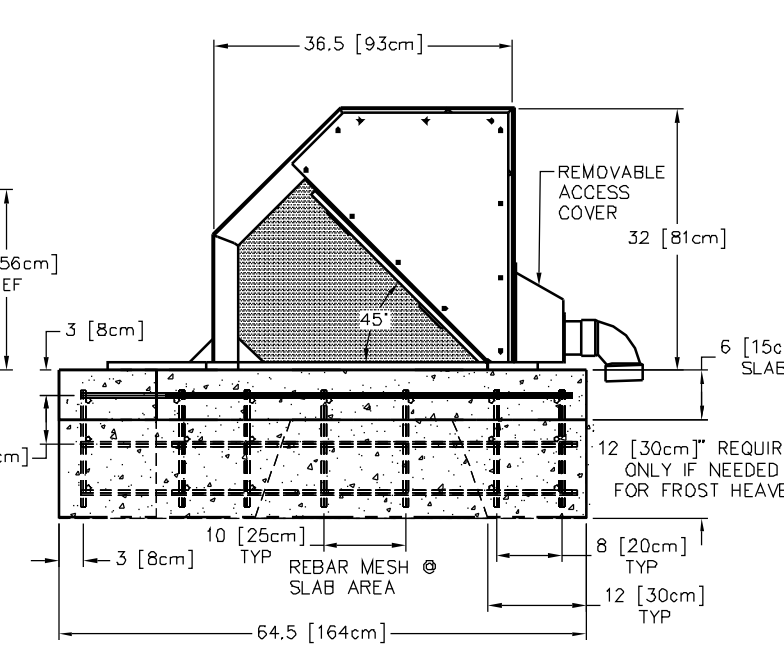
- CONTRACTOR SHALL VERIFY AND BE RESPONSIBLE FOR ALL DIMENSIONS AND CONDITIONS AT THE JOB SITE.
- FOUNDATION CONCRETE MAY BE PLACED DIRECTLY INTO NEAT EXCAVATIONS, PROVIDED THE SIDES OF THE EXCAVATION ARE STABLE. WHERE CAVING OCCURS, PROVIDE SHORING. TYPE AND METHOD OF SHORING SHALL BE AT CONTRACTORS OPTION.
- THE EXCAVATION SHALL BE KEPT DRY AT ALL TIMES. GROUND WATER, IF ENCOUNTERED, SHALL BE PUMPED FROM THE EXCAVATION.
- CONCRETE SHALL BE LABORATORY DESIGNED, MACHINE MIXED, PRODUCING 3,000 PSI [20.68 MPA] AT 28 DAYS.
- CEMENT SHALL BE TESTED PORTLAND CEMENT CONFORMING TO ASTM C150, TYPE II ONLY.
- AGGREGATES SHALL CONFORM TO ASTM C33 & B GRADE PER STANDARD SPECIFICATIONS. MAXIMUM SIZE OF AGGREGATE SHALL BE 1-1/2 INCHES (38mm).
- REINFORCING STEEL SHALL BE DEFORMED BARS CONFORMING TO ASTM A615, GRADE 60 (60,000 PSI OR 413.7MPa).
- HOOKS AND BENDS SHALL CONFORM TO ACI STANDARD 318, LATEST REVISION. INSIDE DIAMETER OF HOOKS AND BENDS SHALL BE AT LEAST SIX (6) BAR DIAMETERS.
- PROVIDE SPACER BARS, CHAIRS, SPREADERS, BLOCKS, ETC. AS REQUIRED TO POSITIVELY HOLD THE STEEL IN PLACE BEFORE CONCRETE IS POURED.
- CONCRETE SHALL BE CONVEYED FROM THE MIXER TO FINAL DEPOSIT BY METHODS THAT WILL PREVENT SEPARATION OR LOSS OF MATERIALS.
- CONCRETE SHALL BE THOROUGHLY CONSOLIDATED BY SUITABLE MEANS DURING PLACEMENT AND SHALL BE THOROUGHLY WORKED AROUND REINFORCEMENT AND EMBEDDED FIXTURES AND CORNERS OF FORMS.
- CONCRETE SHALL BE MAINTAINED ABOVE 50°F (10°C) AND IN A MOIST CONDITION FOR AT LEAST SEVEN (7) DAYS AFTER PLACEMENT. ADEQUATE EQUIPMENT SHALL BE PROVIDED FOR HEATING CONCRETE MATERIALS AND PROTECTING CONCRETE DURING FREEZING OR NEAR FREEZING WEATHER.
- WHERE EXTERIOR WALL FACE REQUIRES SHORING AND/OR FORMING, THE FORMS SHALL BE SUBSTANTIAL AND SUFFICIENTLY TIGHT TO PREVENT LEAKAGE. FORMS SHALL NOT BE REMOVED UNTIL THE CONCRETE IS SEVEN (7) DAYS OLD.
- BACK FILLING SHALL BE DONE BY DEPOSITING AND TAMPING INTO PLACE CLEAN SAND OR POURING LEAN CONCRETE, TO 95% COMPACTION. WATER JETTING SHALL NOT BE ALLOWED.
- CONDUITS AND PIPES OF ALUMINUM SHALL NOT BE ALLOWED.
- CONSTRUCTION JOINTS NOT INDICATED ON THE DRAWINGS SHALL NOT BE ALLOWED. WHERE A CONSTRUCTION JOINT IS TO BE MADE, THE SURFACE OF THE CONCRETE SHALL BE THOROUGHLY CLEANED AND ALL LAITANCE AND STANDING WATER REMOVED.
- CONTRACTOR SHALL BE RESPONSIBLE FOR THE PROTECTION OF ALL ADJACENT AREAS AGAINST DAMAGE AND SHALL REPAIR OR PATCH ALL DAMAGED AREAS TO MATCH EXISTING IMPROVEMENTS.
- CONTRACTOR SHALL KEEP THE CONSTRUCTION AREA CLEAN AT ALL TIMES AND AT COMPLETION OF WORK, REMOVE ALL SURPLUS MATERIALS, EQUIPMENT AND DEBRIS AND LEAVE THE PREMISES IN A CLEAN CONDITION ACCEPTABLE TO THE OWNER OR OWNER'S REPRESENTATIVE.



LEFT SIDE ELEVATION



FRONT ELEVATION (UNPROTECTED SIDE)



RIGHT SIDE ELEVATION

NOTES:

- OPTIONAL FEATURES INCLUDE

	PART NO.
A HEATER, 'W' WATTS @ 120 VOLTS	B3010
A HEATER, 'W' WATTS @ 240 VOLTS	B3011
B LIMIT SWITCH, FULLY DOWN	9072-3
C LIMIT SWITCH, FULLY UP	9072-2
- ALL STEEL MEMBERS PER AISC STANDARDS WELDING DESIGN CRITERIA AWS D1.1, LATEST REVISION.
- ALL MILD STEEL COMPONENTS SANDBLASTED TO NEAR WHITE METAL AFTER FABRICATION AND PRIOR TO COATING.

ITEM	REQ'D	DESCRIPTION/MATERIAL
1	1	FRAME / MOUNTING BASE ASSY
2	1	BARRIER PLATE ASSY
3	2	HINGE ASSY
4	1	TOP COVER
5	1	INNER COVER
6	1	OUTER COVER

REV.	DESCRIPTION	DRWN BY	DATE	APPV BY	DATE
C	ECO 2004-031	J.M.	2/18/04		
B	ECO 2003-94	MP	030806		
A	ECO 2003-54	JFW	030219		

THIS DRAWING, UNLESS OTHERWISE NOTED, REMAINS THE SOLE PROPERTY AND TRADE SECRET OF DELTA SCIENTIFIC CORPORATION. IT SHALL NOT BE DISCLOSED, REPRODUCED OR USED FOR MANUFACTURE, DESIGN OR CONSTRUCTION WITHOUT THE EXPRESS AUTHORIZATION OF DELTA SCIENTIFIC CORPORATION. THE USER BY ACCEPTING THIS DRAWING, ASSUMES CUSTODY THEREOF AND UNDER THE ABOVE TERMS AGREES NOT TO ALLOW USE OF IT BY UNAUTHORIZED PERSONS.

UNLESS OTHERWISE NOTED, DIMENSIONS ARE IN INCHES.

TOLERANCES:
 .x = ±.060
 .xx = ±.030
 .xxx = ±.010
 ANGLES = ±.5°

SURFACE FINISH
 125

REMOVE ALL BURRS & BREAK SHARP EDGES .02 MAX

DELTA SCIENTIFIC CORPORATION
 24901 WEST AVE. STAMFORD
 VALENCIA, CA 91355 U.S.A.
 (661) 257-1800 FAX (661) 257-0617

DELTA

TW2015 LEFT HAND SURFACE MOUNT ROADWAY BARRIER GENERAL ARRANGEMENT

DRWN BY	DATE	DRAWING NO.	REV.
CHKD BY	DATE	90200	C
APPV BY	DATE	SCALE: 1:12	SHEET 1 OF 1