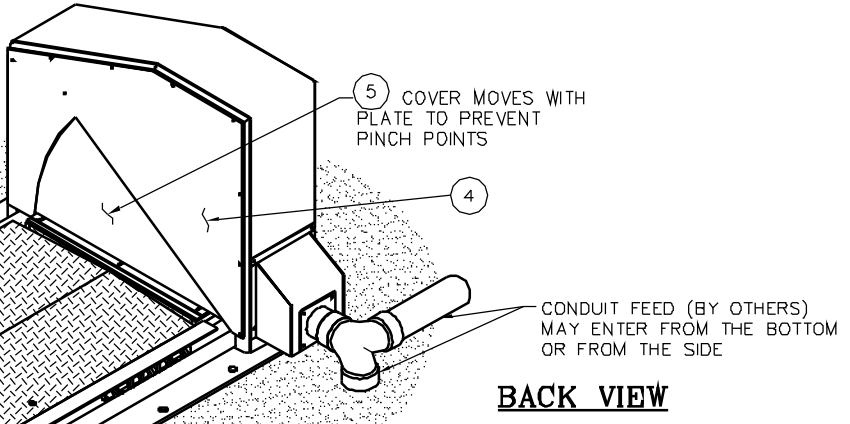
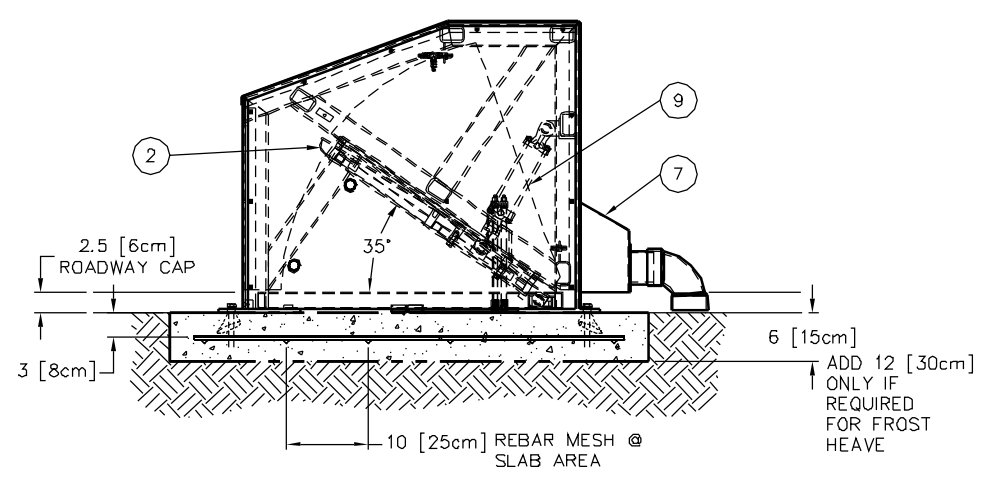
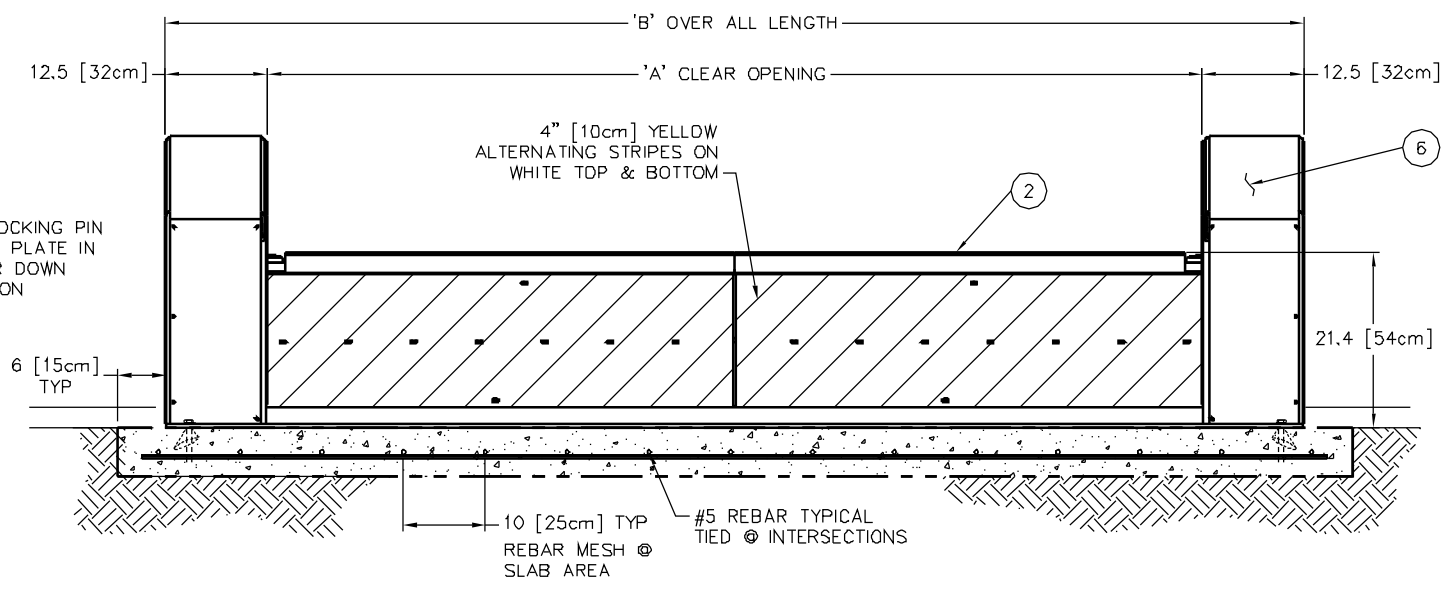
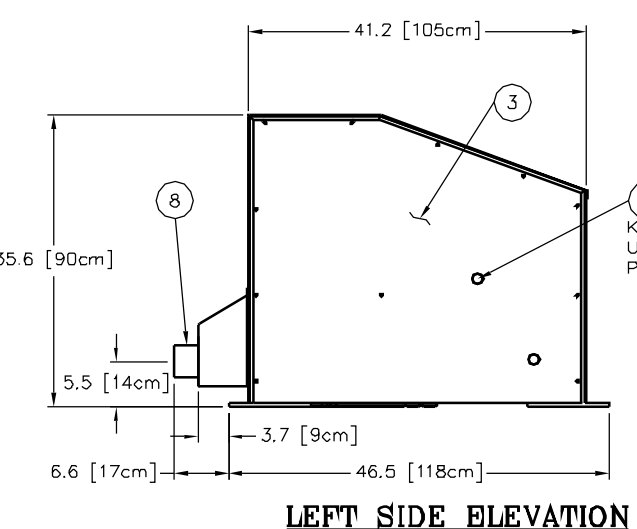
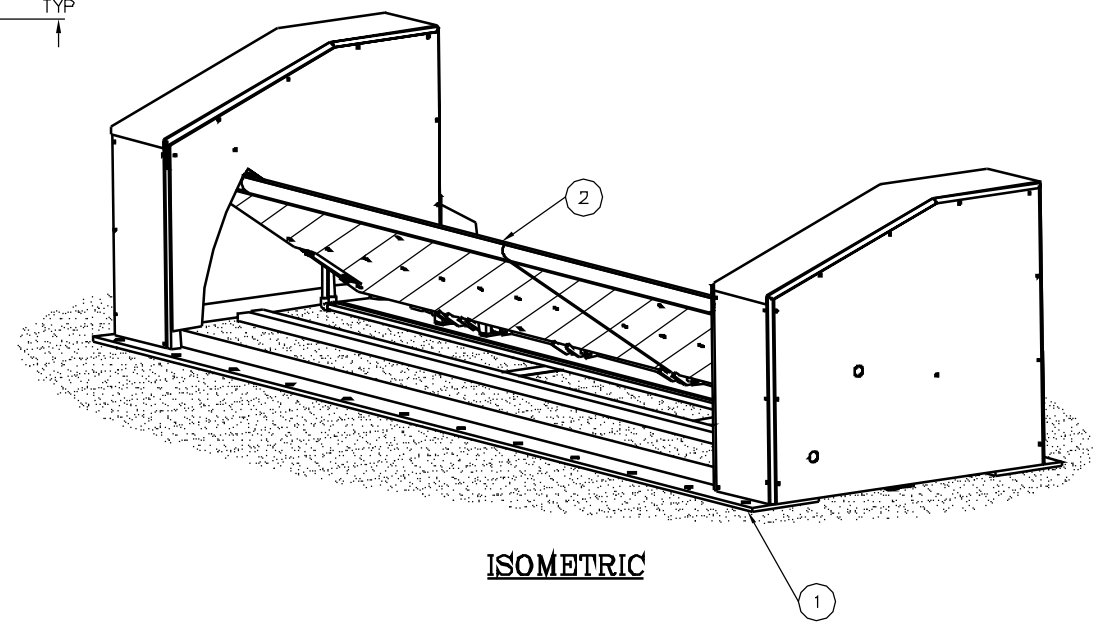
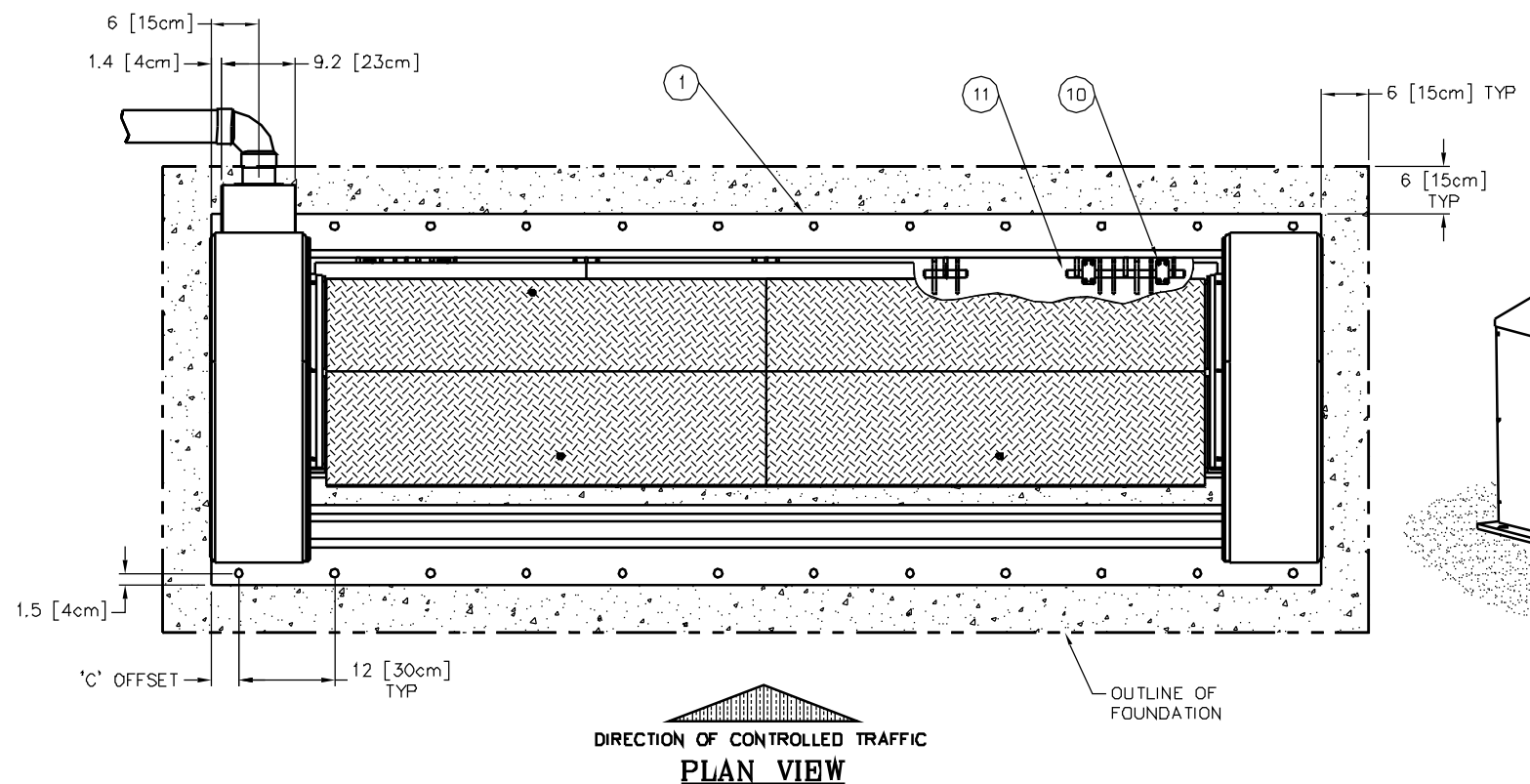


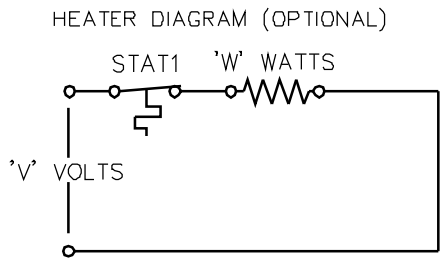
CONCRETE NOTES & RECOMMENDED SPECIFICATIONS:

- CONTRACTOR SHALL VERIFY AND BE RESPONSIBLE FOR ALL DIMENSIONS AND CONDITIONS AT THE JOB SITE.
- FOUNDATION CONCRETE MAY BE PLACED DIRECTLY INTO NEAT EXCAVATIONS, PROVIDED THE SIDES OF THE EXCAVATION ARE STABLE. WHERE CAVING OCCURS, PROVIDE SHORING. TYPE AND METHOD OF SHORING SHALL BE AT CONTRACTOR'S OPTION.
- THE EXCAVATION SHALL BE KEPT DRY AT ALL TIMES. GROUND WATER, IF ENCOUNTERED, SHALL BE PUMPED FROM THE EXCAVATION.
- CONCRETE SHALL BE LABORATORY DESIGNED, MACHINE MIXED, PRODUCING 3,000 PSI [20.68 MPA] AT 28 DAYS.
- CEMENT SHALL BE TESTED PORTLAND CEMENT CONFORMING TO ASTM C150, TYPE II ONLY.
- AGGREGATES SHALL CONFORM TO ASTM C33 & B GRADE PER STANDARD SPECIFICATIONS. MAXIMUM SIZE OF AGGREGATE SHALL BE 1-1/2 INCHES (38mm).
- REINFORCING STEEL SHALL BE DEFORMED BARS CONFORMING TO ASTM A615, GRADE 60 (60,000 PSI OR 413.7MPa).
- HOOKS AND BENDS SHALL CONFORM TO ACI STANDARD 318. LATEST REVISION. INSIDE DIAMETER OF HOOKS AND BENDS SHALL BE AT LEAST SIX (6) BAR DIAMETERS.
- PROVIDE SPACER BARS, CHAIRS, SPREADERS, BLOCKS, ETC. AS REQUIRED TO POSITIVELY HOLD THE STEEL IN PLACE BEFORE CONCRETE IS POURED.
- CONCRETE SHALL BE CONVEYED FROM THE MIXER TO FINAL DEPOSIT BY METHODS THAT WILL PREVENT SEPARATION OR LOSS OF MATERIALS.
- CONCRETE SHALL BE THOROUGHLY CONSOLIDATED BY SUITABLE MEANS DURING PLACEMENT AND SHALL BE THOROUGHLY WORKED AROUND REINFORCEMENT AND EMBEDDED FIXTURES AND CORNERS OF FORMS.
- CONCRETE SHALL BE MAINTAINED ABOVE 50°F (10°C) AND IN A MOIST CONDITION FOR AT LEAST SEVEN (7) DAYS AFTER PLACEMENT. ADEQUATE EQUIPMENT SHALL BE PROVIDED FOR HEATING CONCRETE MATERIALS AND PROTECTING CONCRETE DURING FREEZING OR NEAR FREEZING WEATHER.
- WHERE EXTERIOR WALL FACE REQUIRES SHORING AND/OR FORMING, THE FORMS SHALL BE SUBSTANTIAL AND SUFFICIENTLY TIGHT TO PREVENT LEAKAGE. FORMS SHALL NOT BE REMOVED UNTIL THE CONCRETE IS SEVEN (7) DAYS OLD.
- BACK FILLING SHALL BE DONE BY DEPOSITING AND TAMPING INTO PLACE CLEAN SAND OR POURING LEAN CONCRETE, TO 95% COMPACTION. WATER JETTING SHALL NOT BE ALLOWED.
- CONDUITS AND PIPES OF ALUMINUM SHALL NOT BE ALLOWED.
- CONSTRUCTION JOINTS NOT INDICATED ON THE DRAWINGS SHALL NOT BE ALLOWED. WHERE A CONSTRUCTION JOINT IS TO BE MADE, THE SURFACE OF THE CONCRETE SHALL BE THOROUGHLY CLEANED AND ALL LAITANCE AND STANDING WATER REMOVED.
- CONTRACTOR SHALL BE RESPONSIBLE FOR THE PROTECTION OF ALL ADJACENT AREAS AGAINST DAMAGE AND SHALL REPAIR OR PATCH ALL DAMAGED AREAS TO MATCH EXISTING IMPROVEMENTS.
- CONTRACTOR SHALL KEEP THE CONSTRUCTION AREA CLEAN AT ALL TIMES AND AT COMPLETION OF WORK, REMOVE ALL SURPLUS MATERIALS, EQUIPMENT AND DEBRIS AND LEAVE THE PREMISES IN A CLEAN CONDITION ACCEPTABLE TO THE OWNER OR OWNER'S REPRESENTATIVE.

ITEM	REQ'D	DESCRIPTION/MATERIAL	REF NO
1	1	TT107S/FM FRAME ASSEMBLY	'C'
2	1	TT107S/FM BARRIER RAMP ASSEMBLY	'D'
3	2	OUTER-SIDE ACCESS PANEL	8712
4	2	INNER-SIDE ACCESS PANEL	8713
5	2	SLIDING COVER	8714
6	2	TOP COVER	8711
7	1	REMOVABLE HYDRAULIC FITTING COVER	8949
8	1	CONDUIT CONNECTOR	7519-4-6
9	2	HYDRAULIC CYLINDER, 2.5 x 6	9072-X
10	4	TT107S/FM BEARING BLOCK ASSEMBLY	5189-00
11	2	HINGE BAR, STAINLESS STEEL	7563-06
12	2	ST/ST LOCKING PIN	8282



AVAILABLE OPTIONS:
 CONDUIT FEED MAY ENTER FROM EITHER SIDE OR BOTTOM.
 LIMIT SWITCHES MAY BE ADDED FOR BARRIER POSITION INDICATION (STANDARD IS WITHOUT).
 STANDARD COLOR IS WHITE. OTHER COLORS AVAILABLE.
 YELLOW REFLECTIVE STRIPING IS STANDARD. OTHER COLOR(S) AND CONFIGURATIONS AVAILABLE.



C	ECO 2003-114	MP	031021		
B	ECO 2003-97	MP	030616		
A	ECO 2003-67	JNF	030407		
REV.	DESCRIPTION	DRWN BY	DATE	APPVD BY	DATE
<small>THIS DRAWING UNLESS OTHERWISE NOTED, REMAINS THE CONFIDENTIAL PROPERTY AND TRADE SECRET OF DELTA SCIENTIFIC CORPORATION. IT SHALL NOT BE DISCLOSED, REPRODUCED OR USED FOR MANUFACTURE, DESIGN OR CONSTRUCTION WITHOUT THE EXPRESS AUTHORIZATION OF DELTA SCIENTIFIC CORPORATION. THE RECEIPT BY ACCEPTING THIS DRAWING, ASSUMES CUSTOMER'S OBLIGATION TO KEEP THIS DRAWING UNDER THE ABOVE TERMS AND IS NOT TO BE USED BY UNAUTHORIZED PERSONS.</small>		<small>UNLESS OTHERWISE NOTED DIMENSIONS ARE IN INCHES</small> TOLERANCES: .X = ±.060 .XX = ±.030 .XXX = ±.010 ANGLES = ±.5°		DELTA SCIENTIFIC CORPORATION 24901 WEST AVE., STANFORD VALENCIA, CA 91355 U.S.A. (661) 257-1800 FAX (661) 257-0617	
SURFACE FINISH 125		DRAWN BY PROVOST	DATE 030613	DRAWING NO. 90051	REV. C
<small>© 2003 ALL RIGHTS RESERVED REMOVE ALL BURRS & BREAK SHARP EDGES .02 MAX</small>		APPVD BY	DATE	SCALE: 1:12	SHEET 1 OF 1

